

# MONUMENT 274

## CERTIFICATE OF LOCATION OF GOVERNMENT CORNER

North Quarter Corner of Section 36, Township 30 North, Range 22 West, County of Ramsey, State of Minnesota.

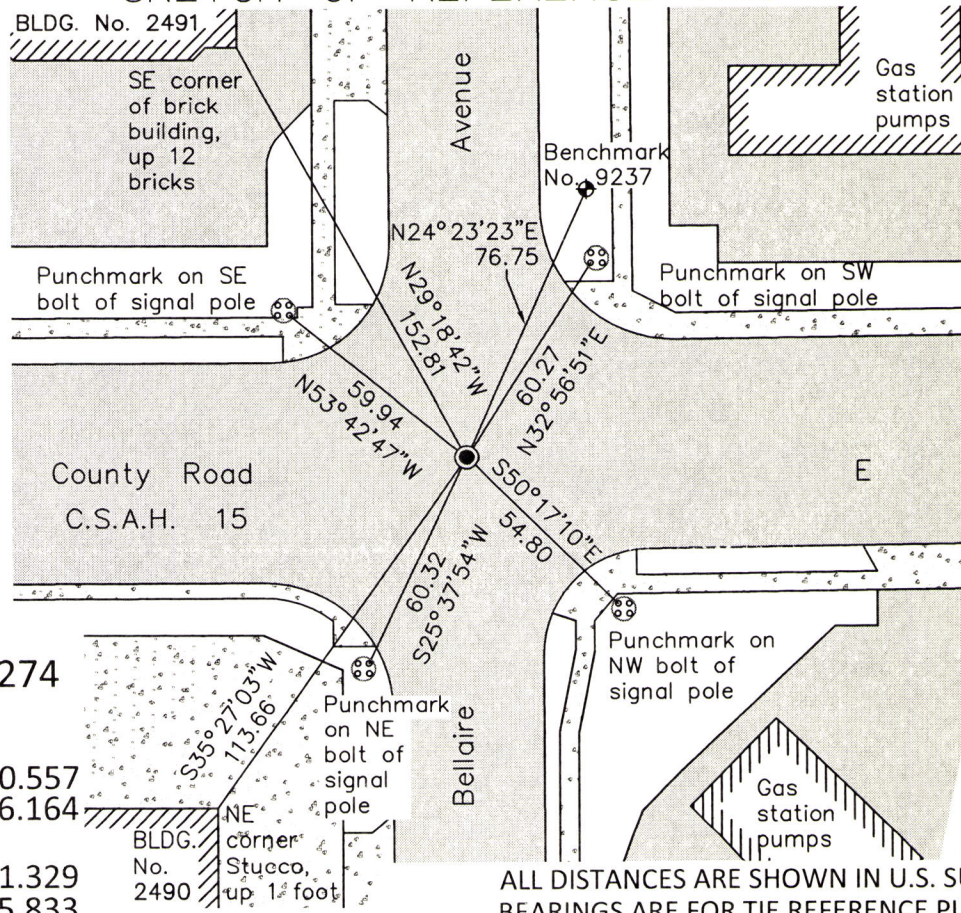
At the corner location shown on the sketch

On June 1, 2016 found a cast iron monument, flush. Tied out monument for removal during road reconstruction.

left monument as found       raised/lowered monument       removed monument (explain)

On August 17, 2016 placed a 20 inch "Ramsey County" cast iron monument using construction ties and local ties. Cast iron manhole assembly to be set by others during road reconstruction.

### SKETCH OF REFERENCE TIES



**MONUMENT 274**  
 RAMSEY COUNTY  
 NAD83 (1986)  
 Northing: 194710.557  
 Easting: 600386.164  
 NAD83 (2011)  
 Northing: 194711.329  
 Easting: 600385.833

Statements of evidence relative to this corner are on the following page.

I hereby certify that this survey, plan, or report was prepared by me or under my direct supervision, that I am a duly Licensed Land Surveyor under the laws of the state of Minnesota, and that this certificate is correct and complete to the best of my knowledge and belief.

Daniel D. Baar      4-24-17  
 Daniel D. Baar      Date  
 Deputy County Surveyor  
 Minnesota License No. 45816

OFFICE OF COUNTY SURVEYOR  
 County of Ramsey

I hereby certify that this document was filed in the County Surveyor's office this 24<sup>th</sup> day of April, 20 17.

Craig W. Hinzman  
 Craig W. Hinzman, L.S.  
 Ramsey County Surveyor



# MONUMENT 274

North Quarter Corner of Section 36, Township 30, Range 22

December 7, 1847	Set Quarter section post; Bur Oak 7 N51°E 56, Bur Oak 5 N80°W 112. Isaac Higbee, Deputy Surveyor
July 20, 1898	In establishing the Quarter corner between Sections 25 and 36 found old government witness stump hole. Set monument. Ramsey County Resurvey
October, 1939	Checked monument. Ramsey County Engineer's Office
February, 1946	Checked monument. Ramsey County Engineer's Office
April, 1958	Checked monument. Ramsey County Engineer's Office
December 13, 1967	Found and tied 6 x 6 stone monument. Minnesota Highway Department
May, 1988	Monument destroyed during construction; replaced with a 20 in. cast iron monument. Ramsey County Surveyor's Office
July, 1989	Retied monument. Ramsey County Surveyor's Office
September 23, 1999	Retied monument. Ramsey County Surveyor's Office
October 27, 2005	Retied monument. Ramsey County Surveyor's Office
June 7, 2010	Retied monument. Ramsey County Surveyor's Office
November 9, 2015	Checked monument and performed static GPS observation. Ramsey County Surveyor's Office
June 1, 2016	Checked monument and ties according to Certificate of Location dated June 7, 2010. The reconstruction of the signal lights at this intersection has obliterated four local ties. Retied monument. Set construction ties for monument removal during road reconstruction. Ramsey County Surveyor's Office
August 17, 2016	Set new 20 inch "Ramsey County" cast iron monument using construction ties and local ties. Cast iron manhole assembly to be set by others. Tied monument. Ramsey County Surveyor's Office