

# MONUMENT 273

## CERTIFICATE OF LOCATION OF GOVERNMENT CORNER

Northeast Corner of Section 35, Township 30 North, Range 22 West, County of Ramsey, State of Minnesota.

At the corner location shown on the sketch

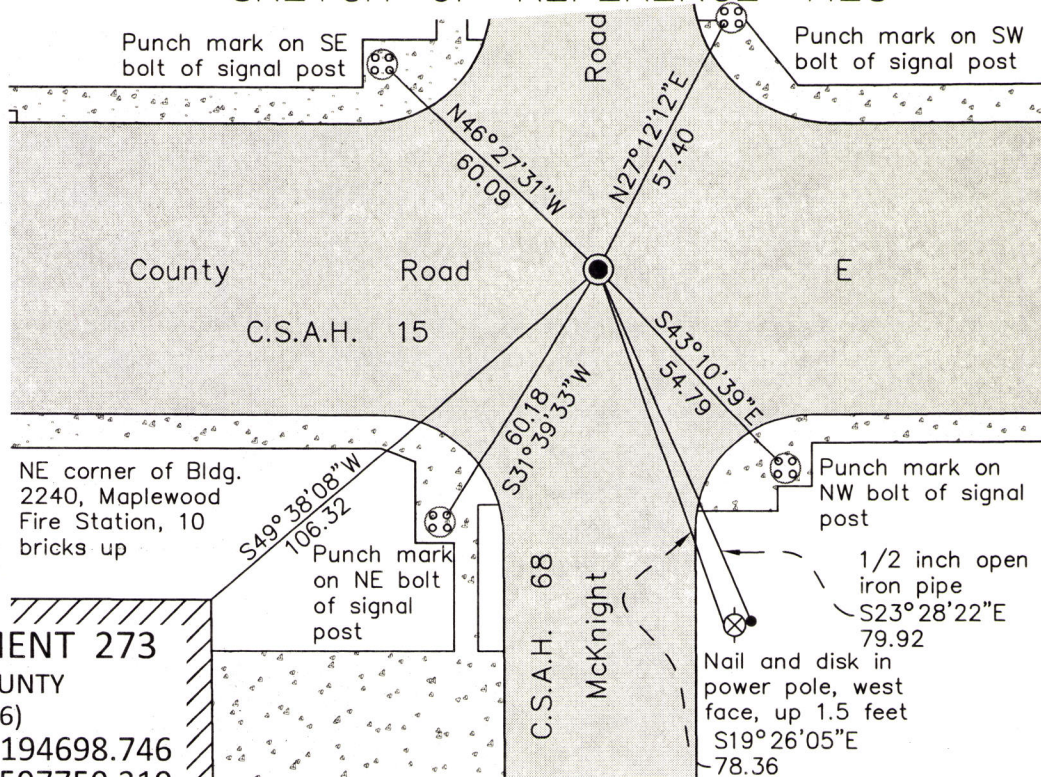
On June 2, 2016 found cast iron monument, flush. Tied out monument for removal during road reconstruction.

left monument as found       raised/lowered monument       removed monument (explain)

On August 17, 2016 placed a cast iron monument using construction ties and local ties.

Cast iron manhole assembly over monument to be set by others.

### SKETCH OF REFERENCE TIES



#### MONUMENT 273

RAMSEY COUNTY  
NAD83 (1986)  
Northing: 194698.746  
Easting: 597750.319

RAMSEY COUNTY  
NAD83 (2011)  
Northing: 194699.496  
Easting: 597750.001

ALL DISTANCES ARE SHOWN IN U.S. SURVEY FEET.  
BEARINGS ARE FOR TIE REFERENCE PURPOSES ONLY.

Statements of evidence relative to this corner are on the following page.

I hereby certify that this survey, plan, or report was prepared by me or under my direct supervision, that I am a duly Licensed Land Surveyor under the laws of the state of Minnesota, and that this certificate is correct and complete to the best of my knowledge and belief.

Daniel D. Baar      4-24-17  
Daniel D. Baar      Date  
Deputy County Surveyor  
Minnesota License No. 45816

OFFICE OF COUNTY SURVEYOR  
County of Ramsey

I hereby certify that this document was filed in the County Surveyor's office this 24<sup>th</sup> day of April, 20 17.

Craig W. Hinzman  
Craig W. Hinzman, L.S.  
Ramsey County Surveyor



# MONUMENT 273

Northeast Corner of Section 35, Township 30, Range 22

December 7, 1847	Set post corner to sections 25, 26, 35 & 36; Bur Oak 18 S84°E 4.43, Bur Oak 12 N65°W 112. Isaac Higbee, Deputy Surveyor
July 20, 1898 feet	In establishing the Northwest Corner of Section 36 found old stake 33 North of fence. Set monument. Ramsey County Re-monumentation survey
October, 1939	Checked monument. Ramsey County Engineer's Office
February, 1946	Checked monument. Ramsey County Engineer's Office
April, 1958	Checked monument. Ramsey County Engineer's Office
June 21, 1967	Found and tied a 6 x 6 stone monument. Minnesota Highway Department
May, 1988	Cast iron monument destroyed during construction; replaced with 20 in. cast iron monument. Ramsey County Surveyor's Office
July, 1989	Retied monument. Ramsey County Surveyor's Office
September 23, 1999	Retied monument. Ramsey County Surveyor's Office
October 27, 2005	Retied monument. Ramsey County Surveyor's Office
June 7, 2010	Retied monument. Ramsey County Surveyor's Office
November 9, 2015	Checked monument and performed static GPS observation. Ramsey County Surveyor's Office
June 2, 2016	Checked ties and tied out monument for removal during road reconstruction. Ramsey County Surveyor's Office
August 17, 2016	Cast iron monument destroyed during road reconstruction. Set new 20 inch "Ramsey County" cast iron monument using construction ties and local ties. Manhole assembly over top of monument to be set by others. Set monument at slight angle Northeasterly to avoid obstacle under road at bottom of monument. Retied monument. Ramsey County Surveyor's Office