

# MONUMENT 272

## CERTIFICATE OF LOCATION OF FOUND MONUMENT

North Quarter Corner of Section 35, Township 30 North, Range 22 West, County of Ramsey, State of Minnesota.

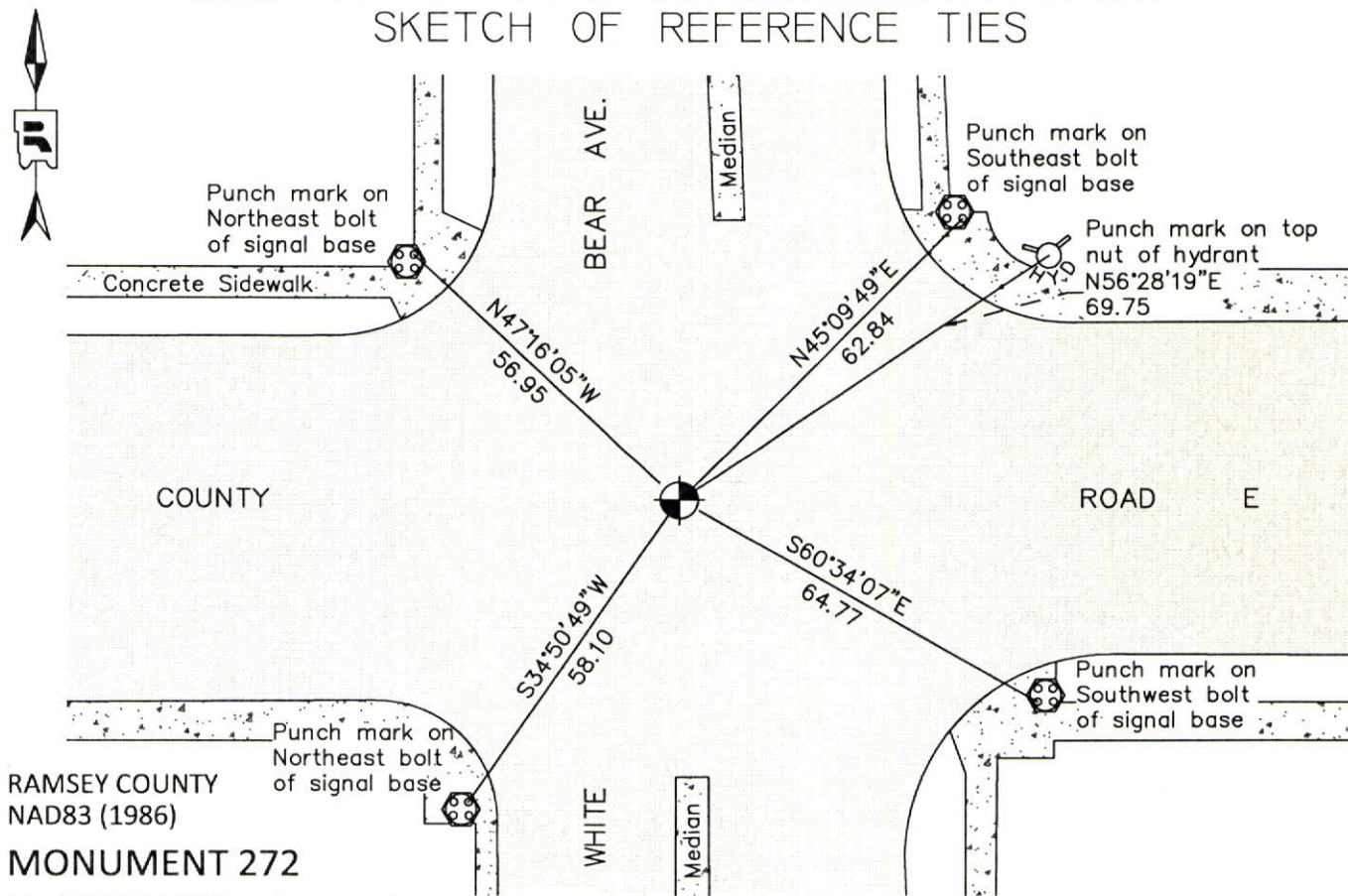
At the corner location shown on the sketch

On April 23, 2012 found a cast iron monument within a cast iron manhole assembly.

left monument as found       raised/lowered monument       removed monument (explain)

On \_\_\_\_\_ placed a \_\_\_\_\_

### SKETCH OF REFERENCE TIES



RAMSEY COUNTY  
NAD83 (1986)  
**MONUMENT 272**

X= 595114.703 (Easting)  
Y= 194704.073 (Northing)

ALL DISTANCES ARE SHOWN IN U.S. SURVEY FEET.  
BEARINGS ARE FOR TIE REFERENCE PURPOSES ONLY.

Statements of evidence relative to this corner are on the following page.

I hereby certify that this document was prepared by me or under my direct supervision and that I am a duly Licensed Land Surveyor under the laws of the State of Minnesota.

Daniel D. Baar      12-15-14  
Daniel D. Baar      Date

Minnesota License No. 45816

- County Surveyor       Land Surveyor  
 Deputy County Surveyor

OFFICE OF COUNTY SURVEYOR  
County of Ramsey

I hereby certify that this document was filed in the County Surveyor's office this 15th day of December, 20 14.

Craig W. Hinzman  
Craig W. Hinzman, L.S.  
Ramsey County Surveyor

# MONUMENT 272

North Quarter Corner of Section 35, Township 30 North, Range 22 West

Set 1/4 Section post, Bur Oak 14 S34°E 3.82, December 7, 1847.

In establishing the 1/4 Corner between Section 26 and 35, found two boulder monuments, one at the Northwest Corner and one at the Northeast Corner of White Bear Road and Wildwood Road and also found an old stake at 1/4 Corner which checked the two monuments. Government witness trees gone, set monument at 1/4 Corner and tied it, August, 1896.

Checked monument, October, 1939.

Checked monument, February, 1946.

Checked monument, April, 1958.

Checked monument, July, 1967.

Found a cast iron monument in place, tied monument, December 19, 1991.

Retied monument, September 23, 1999.

Retied monument, August 27, 2007.

Tied monument for removal during road reconstruction, April 4, 2012.

Re-established position using construction ties; dug down +/-3 ft., found nothing. Set a 20 in. cast iron monument +/-10 in. below finished grade. Cast iron manhole assembly set by others; tied monument, April 23, 2012.