

# MONUMENT 271

## CERTIFICATE OF LOCATION OF GOVERNMENT CORNER

Northeast Corner of Section 34, Township 30 North, Range 22 West, County of Ramsey, State of Minnesota.

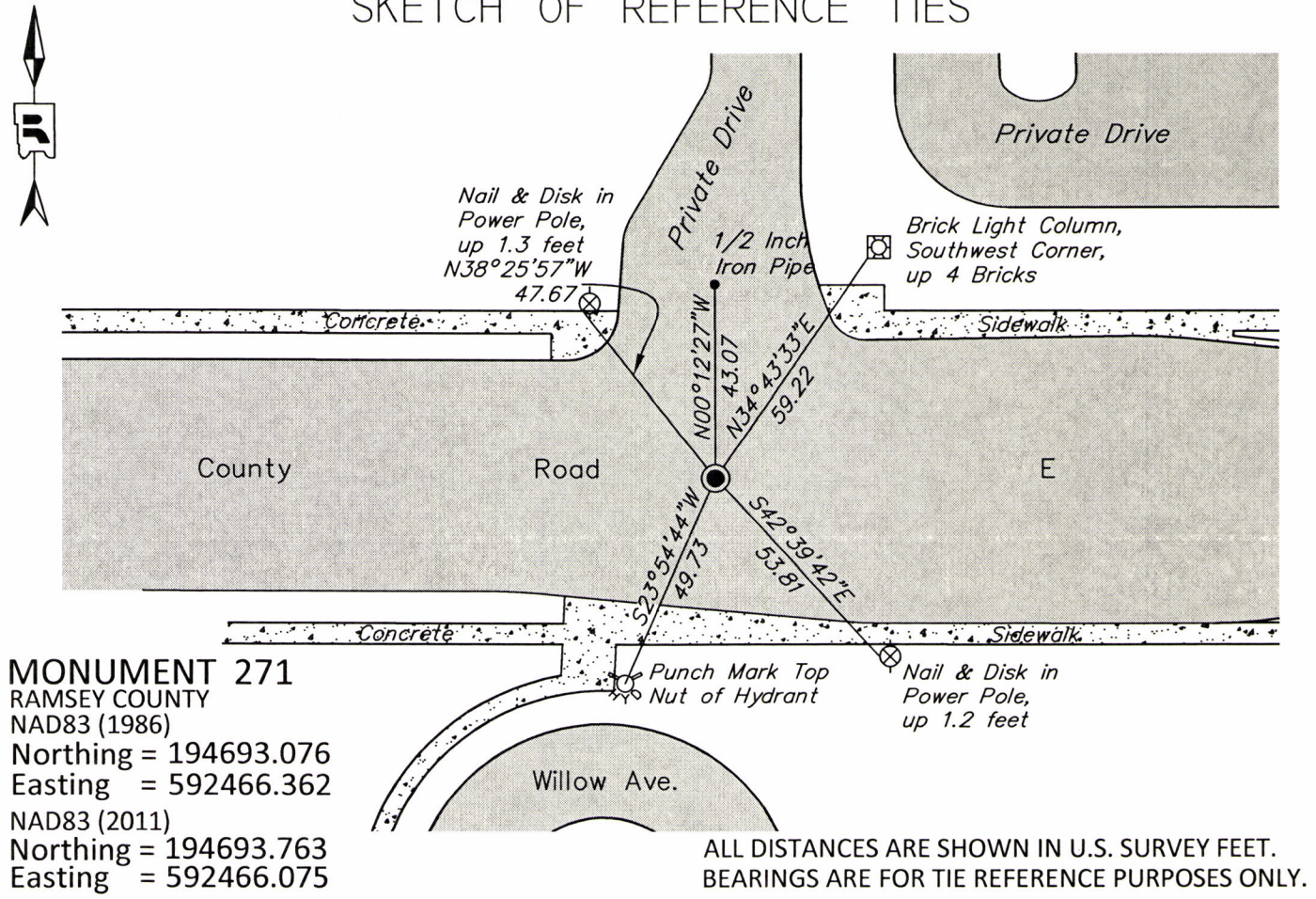
At the corner location shown on the sketch

On June 2, 2016 found a cast iron monument, flush in bituminous road; tied for removal during road reconstruction.

left monument as found     
  raised/lowered monument     
  removed monument (explain)

On \_\_\_\_\_ placed a \_\_\_\_\_

### SKETCH OF REFERENCE TIES



Statements of evidence relative to this corner are on the following page.

I hereby certify that this survey, plan, or report was prepared by me or under my direct supervision, that I am a duly Licensed Land Surveyor under the laws of the state of Minnesota, and that this certificate is correct and complete to the best of my knowledge and belief.

Daniel D. Baar      1-4-17  
 Daniel D. Baar      Date  
 Deputy County Surveyor  
 Minnesota License No. 45816

OFFICE OF COUNTY SURVEYOR  
 County of Ramsey

I hereby certify that this document was filed in the County Surveyor's office this 4th day of January, 20 17.

Craig W. Hinzman  
 Craig W. Hinzman, L.S.  
 Ramsey County Surveyor



# MONUMENT 271

Northeast corner of Section 34, Township 30, Range 22

December 7, 1847	Set post corner to Sections 26, 27, 34 and 35, Bur Oak 12 S30°W 3.78, Bur Oak 10 N9° W 3.51. Isaac Higbee, Deputy Surveyor
August, 1896	In establishing the Northeast Corner of section 34 found old boulder monument on north side of road 33 ft. north from section corner. Found old stake at section corner. Government witness trees gone. Tied it and set monument. Ramsey County Re-monumentation Survey
October, 1939	Checked granite monument. Ramsey County Engineer's Office
February, 1946	Checked granite monument. Ramsey County Engineer's Office
December 13, 1967	Found and tied a 6 x 6 stone monument , left as found. Minnesota Highway Department
May, 1988	Cast iron monument destroyed by construction; replaced with a 20 in. cast iron monument. Ramsey County Surveyor's Office
July, 1989	Tied monument. Ramsey County Surveyor's Office
September 23, 1999	Retied monument. Ramsey County Surveyor's Office
October 27, 2005	Retied monument. Ramsey County Surveyor's Office
June 7, 2010	Retied monument. Ramsey County Surveyor's Office
June 26, 2015	Found a cast iron monument, flush in road. Checked local ties using Certificate of Location dated June 7, 2010. All ties present and in good condition. Ramsey County Surveyor's Office
November 9, 2015	Found cast iron monument and performed 50 minute static GPS observation. Ramsey County Surveyor's Office
June 2, 2016	Found cast iron monument, flush in road. Tied out monument for potential removal during road reconstruction of County Road E. Ramsey County Surveyor's Office
July 25, 2016	Checked monument after Mill and Overlay project on County Road E. Construction crews were able to mill and pave around monument while not disturbing it. Monument in good condition flush in roadway. Ramsey County Surveyor's Office