

# MONUMENT 26S

## CERTIFICATE OF LOCATION OF GOVERNMENT CORNER

South Witness Corner to the West Quarter Corner of Section 6, Township 30 North, Range 23 West, County of Ramsey, State of Minnesota.

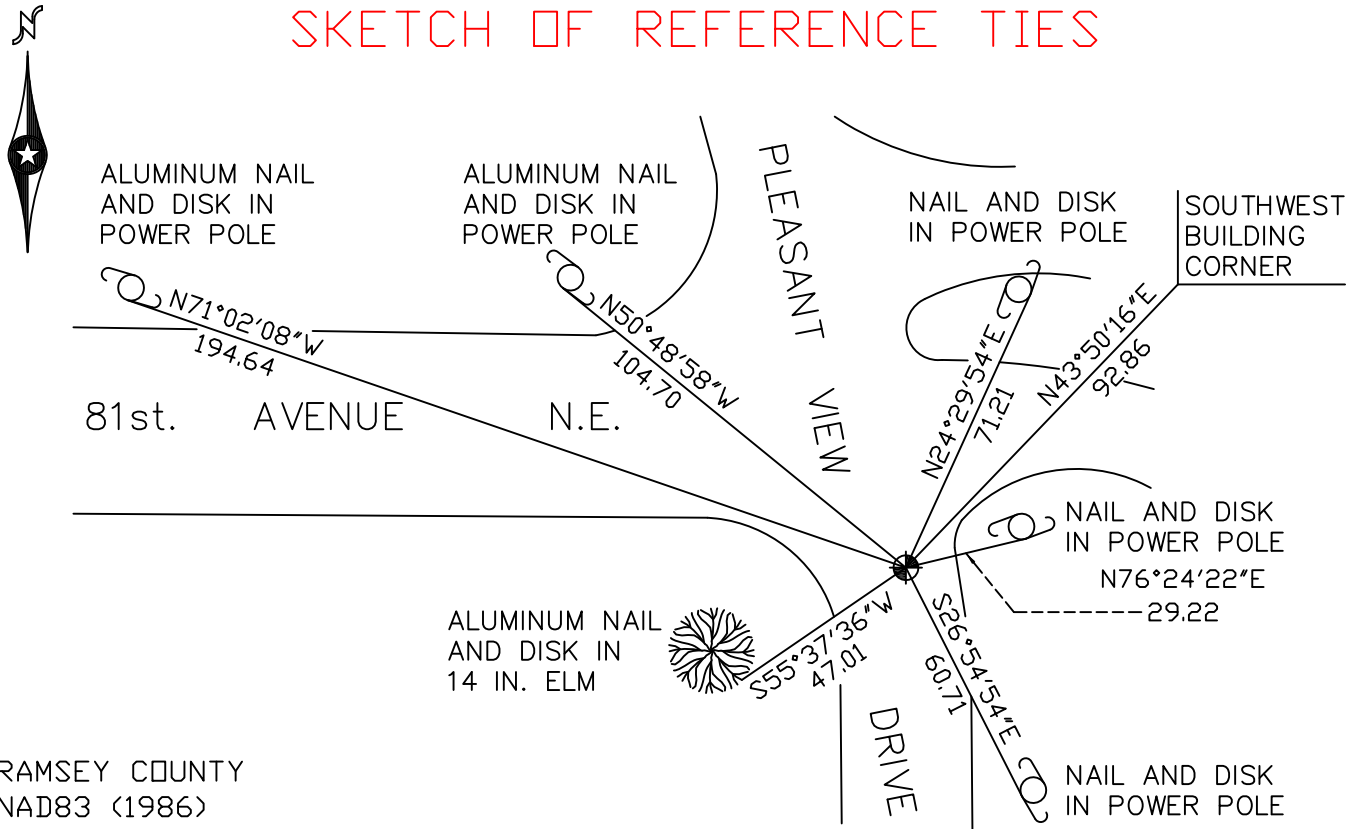
At the corner location shown on the sketch

On September 19, 2008 found a cast iron monument within a cast iron manhole assembly.

left monument as found     lowered monument     removed monument (explain)

On \_\_\_\_\_ placed a \_\_\_\_\_

## SKETCH OF REFERENCE TIES



RAMSEY COUNTY  
NAD83 (1986)  
MONUMENT 26S

X= 540151.642 (Easting)  
Y= 218083.506 (Northing)

ALL DISTANCES ARE SHOWN IN U.S. SURVEY FEET.  
BEARINGS ARE FOR TIE REFERENCE PURPOSES ONLY.

Statements of evidence relative to this corner are on the following page(s).

I hereby certify that this document and the data contained herein was prepared by me or under my direct supervision this \_\_\_\_\_ day of \_\_\_\_\_, 20\_\_\_\_.

SIGNATURE

Minnesota License No. \_\_\_\_\_

- County Surveyor  
 Deputy County Surveyor     Land Surveyor

OFFICE OF COUNTY SURVEYOR  
County of Ramsey

I hereby certify that this document was filed in the County Surveyor's office on the \_\_\_\_ day of \_\_\_\_\_, 20\_\_\_\_.

David D. Claypool, P.L.S., County Surveyor

By \_\_\_\_\_, Deputy

## MONUMENT 26S

Found a P.K. nail next to manhole rim. Checks with Anoka County and Ramsey County ties. Placed a cast iron witness corner monument 33 ft. south on line, May 14, 1975.

Monument removed by Anoka County Highway Department during reconstruction of Pleasant View and County Road 10 intersection. Anoka County replaced Monument 26S, May 4, 1977.

Monument to the south is now an Anoka County cast iron monument. Tied, February 8, 1993.

Retied monument, down 0.83 ft. with the top broken off. Set P.K. nails, September 5, 2001.

Found 9 inches of an Anoka County monument approximately 0.2 feet east of line. Set a P.K. nail at quarter corner location. Set a 20 inch cast iron witness corner monument within a cast iron manhole assembly, 33 feet south on line. Computed ties from data, July 28, 2003.

Tied monument, September 19, 2008.