

# MONUMENT 266

## CERTIFICATE OF LOCATION OF GOVERNMENT CORNER

South Quarter Corner of Section 29, Township 30 North, Range 22 West, County of Ramsey, State of Minnesota.

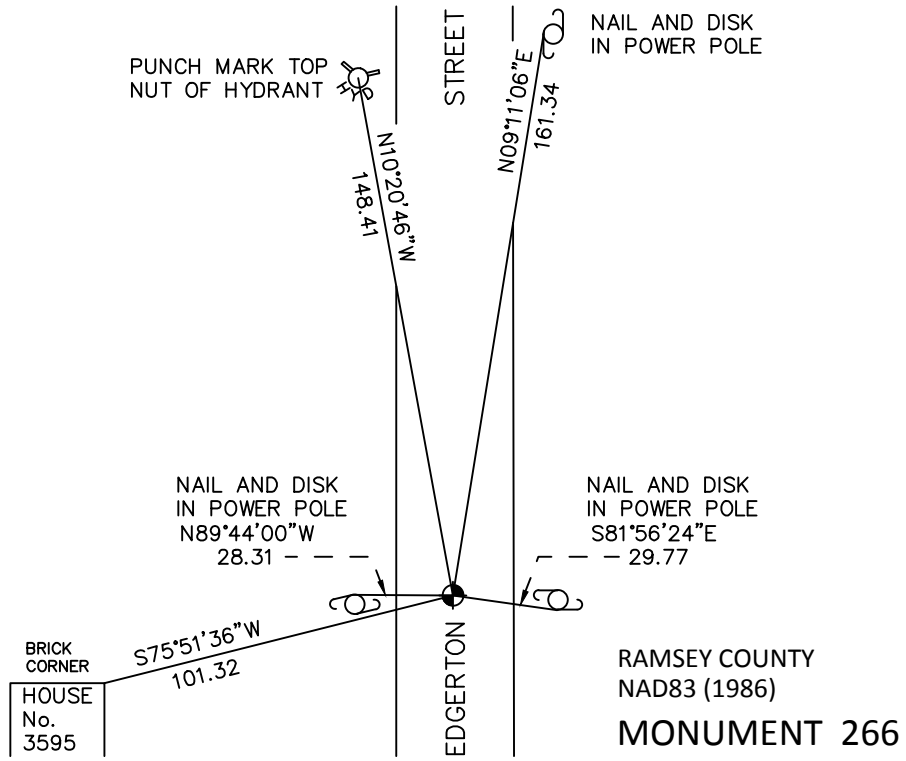
At the corner location shown on the sketch

On September 29, 2010 found a cast iron monument, flush.

left monument as found       raised/lowered monument       removed monument (explain)

On \_\_\_\_\_ placed a \_\_\_\_\_

### SKETCH OF REFERENCE TIES



ALL DISTANCES ARE SHOWN IN U.S. SURVEY FEET.  
BEARINGS ARE FOR TIE REFERENCE PURPOSES ONLY.

RAMSEY COUNTY  
NAD83 (1986)  
**MONUMENT 266**  
X= 579263.057 (Easting)  
Y= 194668.703 (Northing)

Statements of evidence relative to this corner are on the following page.

I hereby certify that this document has been prepared by me or under my direct supervision this \_\_\_\_\_ day of \_\_\_\_\_, 20\_\_\_\_.

\_\_\_\_\_  
SIGNATURE

Minnesota License No. \_\_\_\_\_

- County Surveyor       Land Surveyor  
 Deputy County Surveyor

OFFICE OF COUNTY SURVEYOR  
County of Ramsey

I hereby certify that this document was filed in the County Surveyor's office this \_\_\_\_\_ day of \_\_\_\_\_, 20\_\_\_\_.

\_\_\_\_\_  
SIGNATURE  
Craig W. Hinzman, L.S.  
Ramsey County Surveyor

## MONUMENT 266

Found a granite monument, down 0.5 ft., April, 1974.

Set a short cast iron monument over granite monument and tied, July 31, 1975.

Retied monument, removed cast iron monument, May 13, 1991.

Relocated position and checked ties, September 27, 1991.

Set a 20 in. cast iron monument, October 14, 1992.

Tied monument, December 8, 2000.

Retied monument, August 29, 2006.

Found center of shaft of broken cast iron monument, down +/-1 ft.; checked ties, August 20, 2010.

Set a 4 3/8 in. cast iron monument in concrete over broken cast iron monument, flush with bituminous road; tied monument, September 29, 2010.