

MONUMENT 265

CERTIFICATE OF LOCATION OF GOVERNMENT CORNER

Southwest Corner of Section 29, Township 30 North, Range 22 West, County of Ramsey, State of Minnesota.

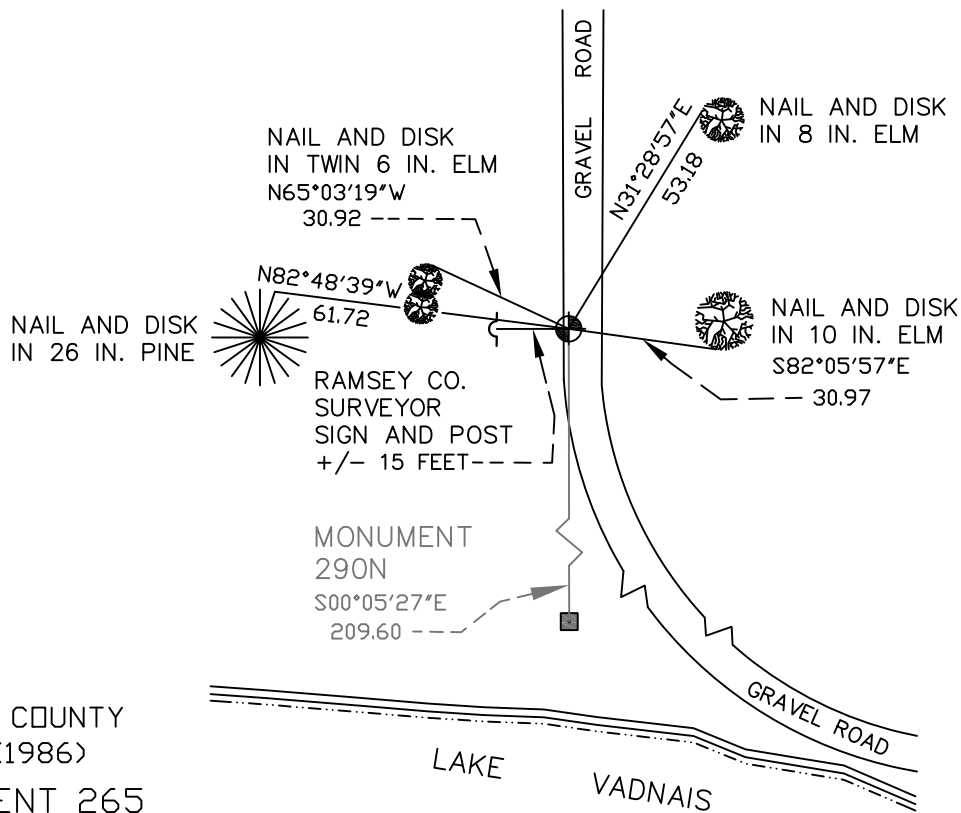
At the corner location shown on the sketch

On May 12, 2008 found a cast iron monument, down 0.2 feet.

left monument as found lowered monument removed monument (explain)

On _____ placed a _____

SKETCH OF REFERENCE TIES



RAMSEY COUNTY
NAD83 (1986)
MONUMENT 265

X= 576646.413 (Easting)
Y= 194677.530 (Northing)

ALL DISTANCES ARE SHOWN IN U.S. SURVEY FEET.
BEARINGS ARE FOR TIE REFERENCE PURPOSES ONLY.

Statements of evidence relative to this corner are on the following page(s).

I hereby certify that this document and the data contained herein was prepared by me or under my direct supervision this _____ day of _____, 20____.

SIGNATURE

Minnesota License No. _____

- County Surveyor
 Deputy County Surveyor Land Surveyor

OFFICE OF COUNTY SURVEYOR
County of Ramsey

I hereby certify that this document was filed in the County Surveyor's office on the ____ day of _____, 20____.

David D. Claypool, P.L.S., County Surveyor

By _____, Deputy

MONUMENT 265

Found granite monument in center line of road, flush, April, 1974.

Found monument slightly tipped; removed; placed 20 in. cast iron monument, September 10, 1990.

Placed a sign and post +/- 12.0 ft. west of monument, October 19, 1990.

Retied monument, down +/- 0.2 ft.; replaced sign and post, January 7, 2003.

Retied monument; set sign and post +/- 15.0 ft. west of monument, May 12, 2008.