

# MONUMENT 260N

## CERTIFICATE OF LOCATION OF GOVERNMENT CORNER

Monument on the East line of the Southwest Quarter of Section 26, Township 30 North, Range 23 West, County of Ramsey, State of Minnesota.

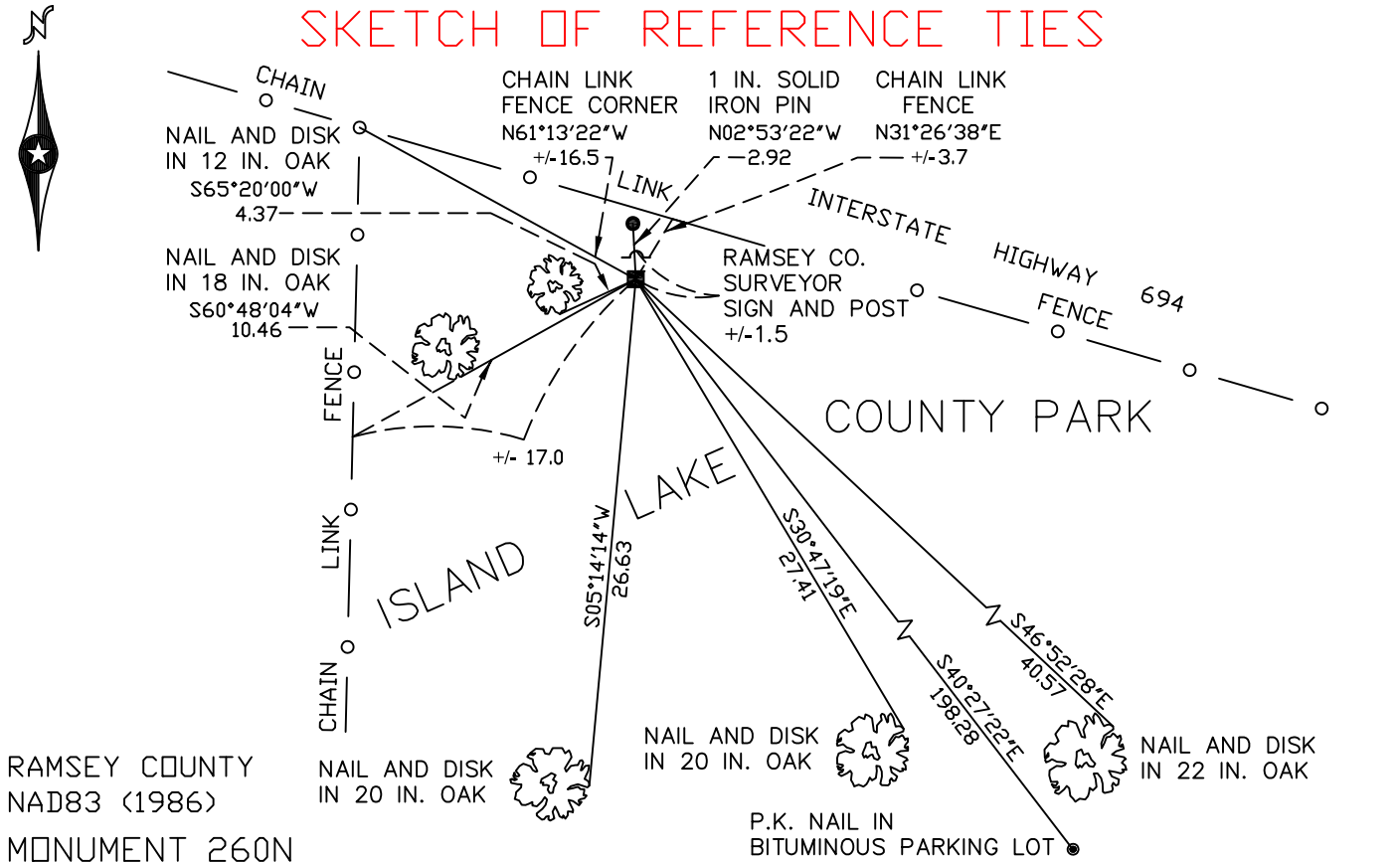
At the corner location shown on the sketch

On September 10, 2008 found a granite monument, flush.

left monument as found     lowered monument     removed monument (explain)

On \_\_\_\_\_ placed a \_\_\_\_\_

### SKETCH OF REFERENCE TIES



RAMSEY COUNTY  
NAD83 (1986)

MONUMENT 260N

X= 563677.584 (Easting)  
Y= 197027.356 (Northing)

ALL DISTANCES ARE SHOWN IN U.S. SURVEY FEET.  
BEARINGS ARE FOR TIE REFERENCE PURPOSES ONLY.

Statements of evidence relative to this corner are on the following page(s).

I hereby certify that this document and the data contained herein was prepared by me or under my direct supervision this \_\_\_\_\_ day of \_\_\_\_\_, 20\_\_\_\_.

SIGNATURE

Minnesota License No. \_\_\_\_\_

- County Surveyor  
 Deputy County Surveyor     Land Surveyor

OFFICE OF COUNTY SURVEYOR

County of Ramsey

I hereby certify that this document was filed in the County Surveyor's office on the \_\_\_\_ day of \_\_\_\_\_, 20\_\_\_\_.

David D. Claypool, P.L.S., County Surveyor

By \_\_\_\_\_, Deputy

# MONUMENT 260N

Found a granite monument, flush. Placed by Frank Kvidera to reference center of Section 26 on line, September, 1967.

Tied monument, June 5, 1990.

Retied monument, August 14, 1995.

Retied monument, July 31, 2003.

Set a sign and post, +/-1.5 ft. north of monument, September 5, 2008.

Retied monument, September 10, 2008.