

# MINNESOTA DEPARTMENT OF TRANSPORTATION CERTIFICATE OF LOCATION OF GOVERNMENT CORNER

NORTH QUARTER CORNER, Section 34, Township 30 North, Range 23 West,  
4th Principal Meridian Survey, Ramsey County, Minnesota.

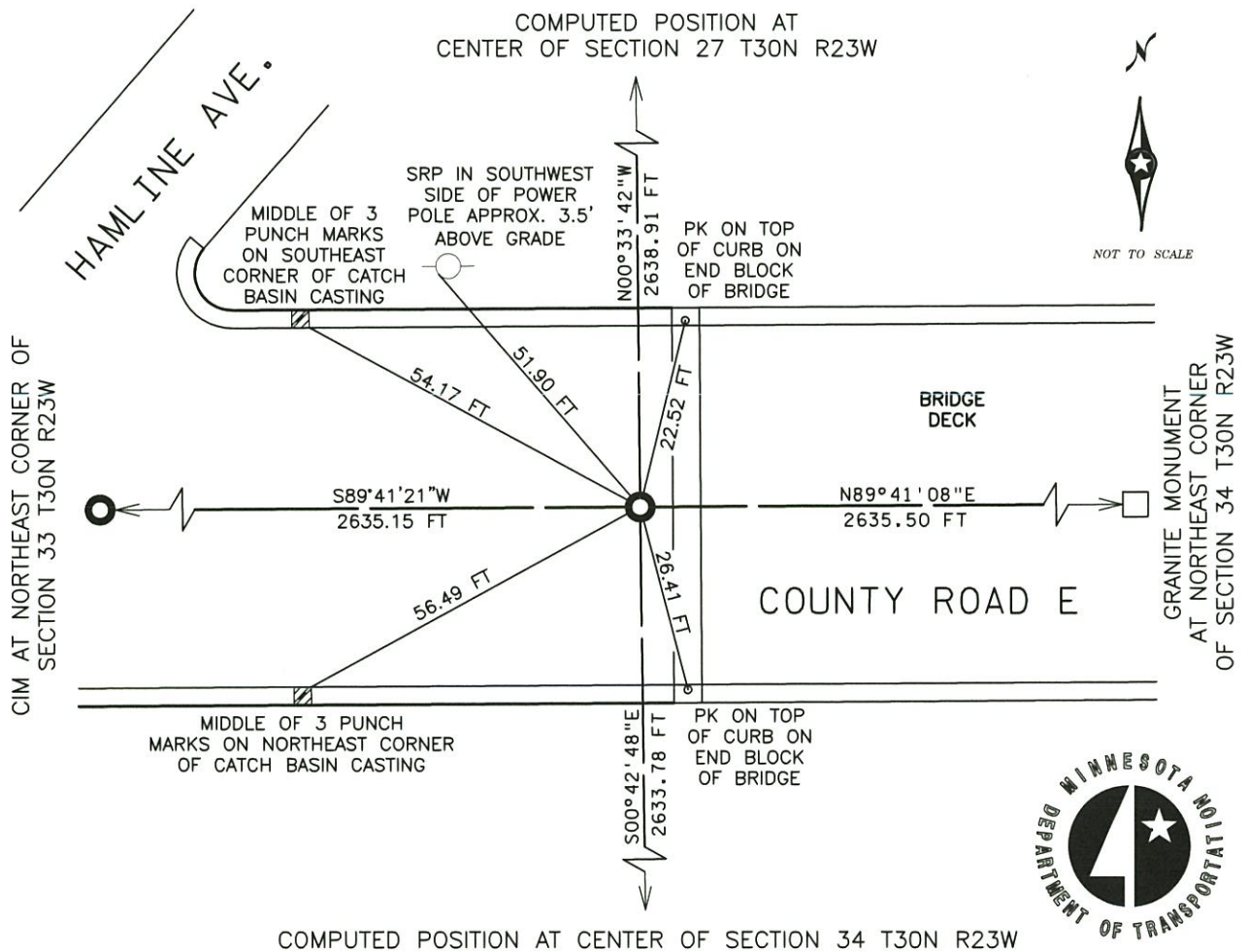
At the corner location shown on the sketch:

- On APRIL 8, 2015 found CAST IRON MONUMENT
- left monument as found,     lowered monument,     removed monument (explain)

SET TEMPORARY TIES OUTSIDE OF CONSTRUCTION LIMITS TO RESET CORNER AFTER CONSTRUCTION

- On JULY 28, 2015 set CAST IRON MONUMENT WITH MANHOLE ASSEMBLY AND MEASURED NEW REFERENCE TIES

Corner reference ties measured on JULY 28, 2015  
Statement of evidence relative to this corner location is on back of page.



Tie distances are slope distance measured with a temperature corrected steel tape.  
Bearings are based on Ramsey County NAD 83 (1996) coordinates.

I hereby certify that this survey, plan or report was prepared by me or under my direct supervision and that I am a duly Licensed Land Surveyor under the laws of the state of Minnesota. I further certify that this United States public land survey monument record is correct and complete to the best of my knowledge.

Kevin M. Sutherland  
Kevin M. Sutherland, MnDOT Surveys  
Minnesota License No. 50807

11.6.17  
Date



**North Quarter Corner, Section 34, T. 30 N. - R. 23 W.****Statement of Evidence**

Unknown date, Found nothing at corner location. Set a cast iron monument. Granite monument may exist in pavement below, no date given in field book.

1987 July, Cast iron monument milled off.

Unknown date, Cast iron monument replaced, no date given in field book.

1992 January 9, Tied monument.

2000 April 26, Tied out monument for construction.

2000 May 2, Lowered 20 in. cast iron monument.

2000 October, Set a cast iron manhole assembly over monument.

2005 October 26, Tied monument,

2010 July 26, Retied monument

2011 November 28, Certificate of Location certified by Daniel D. Baar, Deputy County Surveyor

2015 April 8, MnDOT survey personnel surveyed the cast iron monument by means of static GPS and temporary reference ties were set outside of the construction limits for remonumentation after construction.

2015 July 28, MnDOT survey personnel set a cast iron monument inside a manhole assembly using the temporary reference ties and verified the monument position with the static GPS coordinates measured on April 8<sup>th</sup>, 2015. Ties were taken as shown on the front of this certificate.

**Summary and Conclusion:**

MnDOT survey personnel visited the corner in April 2015 for the purpose of taking temporary reference ties, so that a monument could be reset after reconstruction of the County Road E Bridge (S.P.6216-130). In 2015 MnDOT monumented the corner position with a cast iron monument using the aforesaid temporary reference ties.

This Certificate of Location is a perpetuation of the corner certified by Daniel D. Baar in 2011.