

MONUMENT 255

CERTIFICATE OF LOCATION OF GOVERNMENT CORNER

Northeast Corner of Section 32, Township 30 North, Range 23 West, County of Ramsey, State of Minnesota.

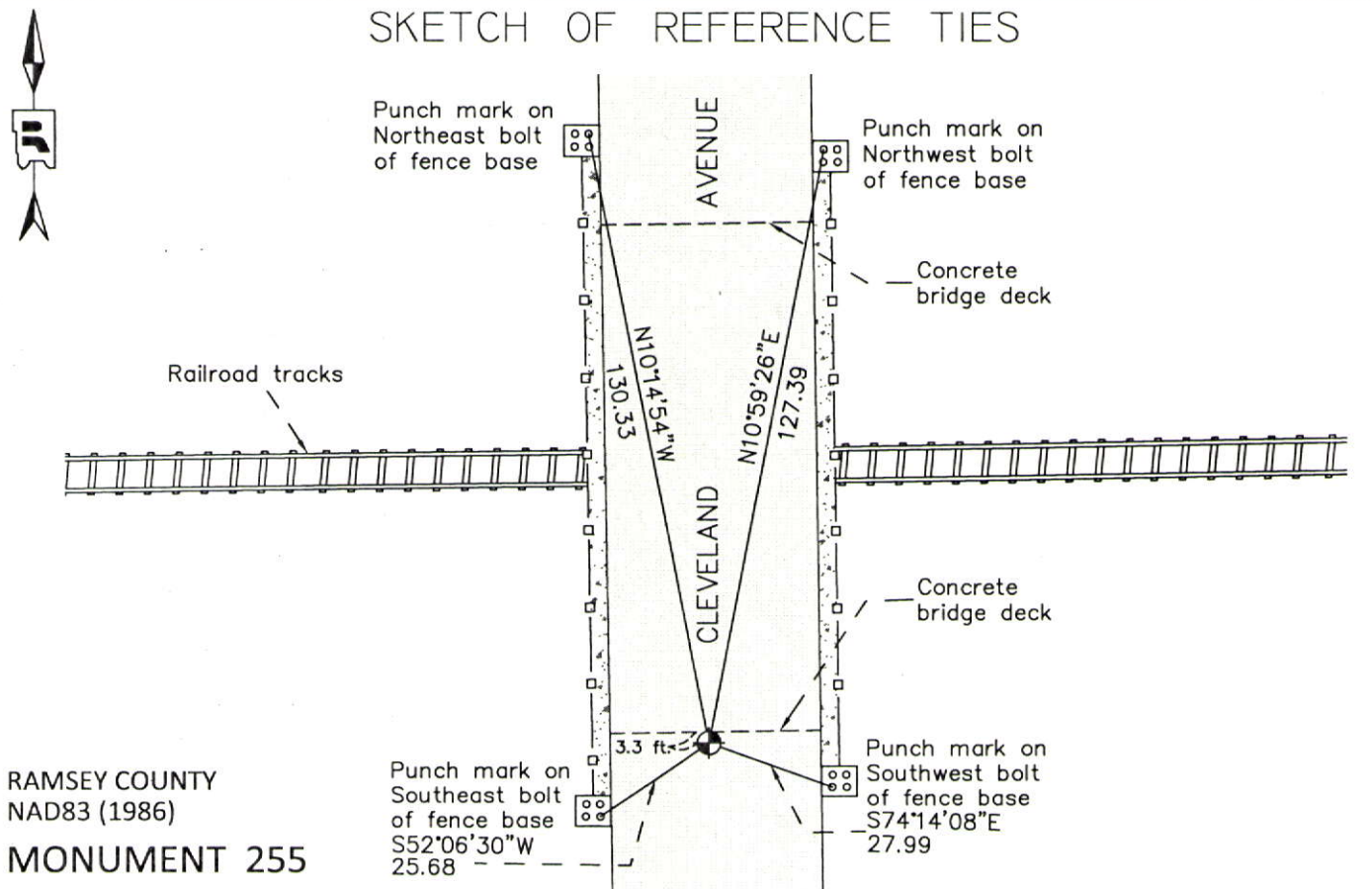
At the corner location shown on the sketch

On May 29, 2012 found a "Ramsey County" cast iron monument, flush.

left monument as found raised/lowered monument removed monument (explain)

On _____ placed a _____

SKETCH OF REFERENCE TIES



RAMSEY COUNTY
NAD83 (1986)
MONUMENT 255

X= 550546.482 (Easting)
Y= 194517.112 (Northing)

ALL DISTANCES ARE SHOWN IN U.S. SURVEY FEET.
BEARINGS ARE FOR TIE REFERENCE PURPOSES ONLY.

Statements of evidence relative to this corner are on the following page.

I hereby certify that this document was prepared by me or under my direct supervision and that I am a duly Licensed Land Surveyor under the laws of the State of Minnesota.

Daniel D. Baar

12-30-14

Daniel D. Baar
Minnesota License No. 45816

- County Surveyor Land Surveyor
 Deputy County Surveyor

OFFICE OF COUNTY SURVEYOR
County of Ramsey

I hereby certify that this document was filed in the County Surveyor's office this 30th day of December, 20 14.

Craig W. Hinzman

Craig W. Hinzman, L.S.
Ramsey County Surveyor

MONUMENT 255

Northeast Corner of Section 32, Township 30 North, Range 23 West

Set post Corner to Sections 28, 29, 32, & 33, Bur Oak 10 N26°E 166, "Do" (Bur Oak) 14 S9°E 1.52, December 16, 1847.

In establishing the Northwest Corner of Section 33, used Corner set by Marsh. Found one Government witness stump; fixed Corner, and tied it, June 4, 1897.

Set monument August 4, 1897.

ROHLEDER'S HOME AND GARDEN ACRES plat shows a stone monument, May 3, 1938.

Checked cast iron monument, over granite, December, 1943.

Old notes call for a granite monument with a cast iron monument on top. Found cast iron monument, up 4 in. under bridge and tied, September 24, 1974.

Found cast iron monument broken off. Dug down to granite monument and set new cast iron monument and checked ties, November 24, 1981.

Found cast iron monument tipped. Dug down to granite monument. Reset cast iron monument and retied, July 18, 1989.

Sign mounted horizontally on bridge truss, July 13, 1992.

Tied monument and removed 20 in. cast iron monument and left granite monument in place, April 27, 2000.

Relocated position and cemented 20 in. cast iron monument in pavement flush, August 21, 2001.

Tied monument, June 14, 2002.

Retied monument, July 13, 2007.

Checked condition of Ramsey County cast iron monument and it's ties, May 29, 2012.