

MONUMENT 249

CERTIFICATE OF LOCATION OF FOUND MONUMENT

Monumented Center of Section 25 , Township 30 North, Range 22 West, County of Ramsey, State of Minnesota.

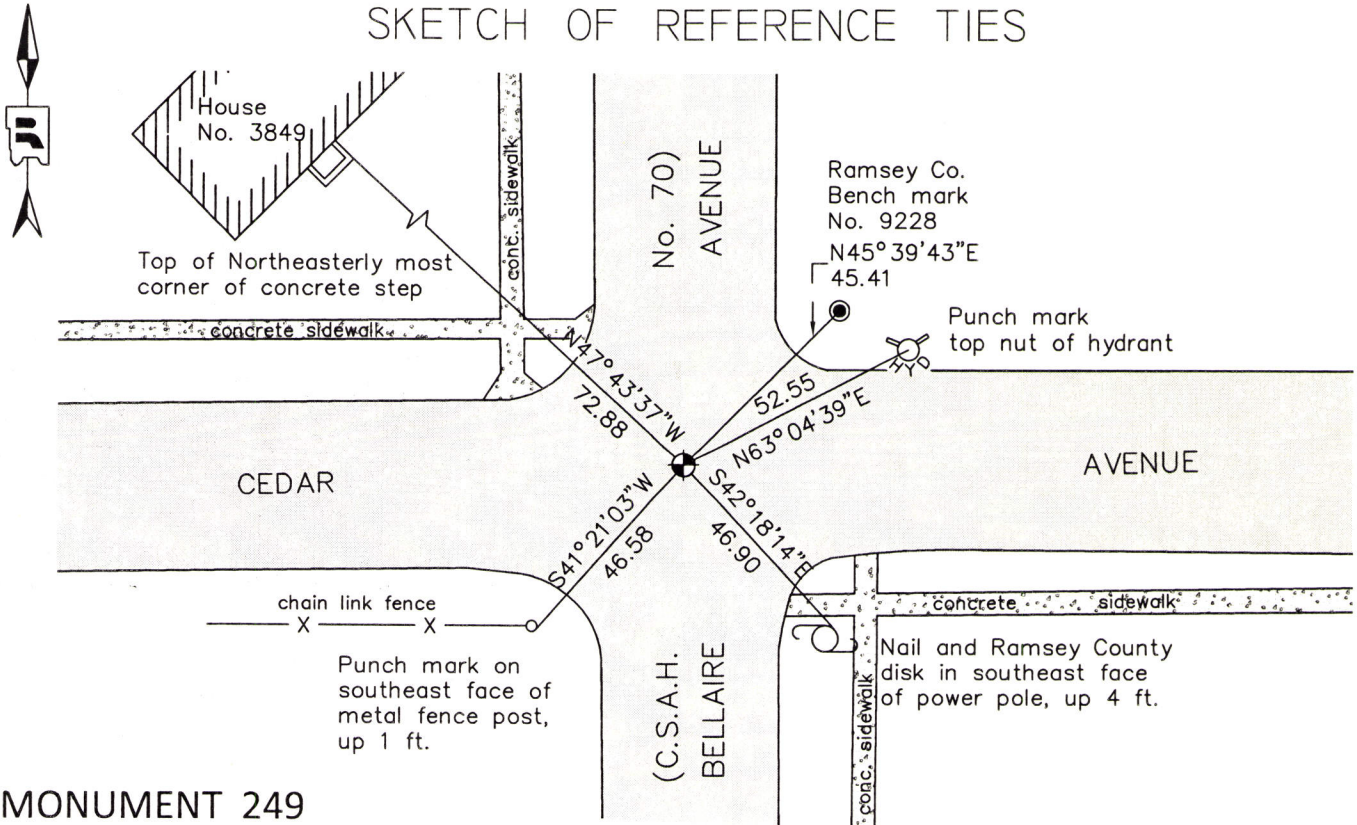
At the corner location shown on the sketch

On May 15, 2015 found a cast iron monument, flush. Tied out monument
for removal during road reconstruction.

left monument as found raised/lowered monument removed monument (explain)

On July 16, 2015 placed a a cast iron monument within a cast iron manhole assembly.
Replaced monument that was removed during road reconstruction.

SKETCH OF REFERENCE TIES



MONUMENT 249

RAMSEY COUNTY
NAD83 (1986)

RAMSEY COUNTY
NAD83 (2011)

ALL DISTANCES ARE SHOWN IN U.S. SURVEY FEET.
BEARINGS ARE FOR TIE REFERENCE PURPOSES ONLY.

X= 600367.921 (Easting)
Y= 197351.744 (Northing)

X= 600367.642 (Easting)
Y= 197351.473 (Northing)

Statements of evidence relative to this corner are on the following page.

I hereby certify that this survey, plan, or report was prepared by me or under my direct supervision, that I am a duly Licensed Land Surveyor under the laws of the state of Minnesota, and that this certificate is correct and complete to the best of my knowledge and belief.

Daniel D. Baar

Daniel D. Baar
Deputy County Surveyor
Minnesota License No. 45816

6-7-16
Date

OFFICE OF COUNTY SURVEYOR
County of Ramsey

I hereby certify that this document was filed in the County Surveyor's office this 7th day of June, 20 16.

Craig W. Hinzman

Craig W. Hinzman, L.S.
Ramsey County Surveyor

MONUMENT 249

Center of Section 25, Township 30 North, Range 22 West

Unknown date, 1900	Fixed the Center of Section 25 by intersection and set monument. Ramsey County Resurvey
October, 1939	Monument checked. Ramsey County Engineering Office
February 1946	Found monument. Ramsey County Engineering Office
June 17, 1975	Found a granite monument down 4 3/8 in. Ramsey County Surveyor's Office
July 10, 1975	Set a short cast iron monument. Ramsey County Surveyor's Office
February 12, 1976	Tied monument. Ramsey County Surveyor's Office
January 11, 1983	Checked monument. Ramsey County Surveyor's Office
June 21, 1991	Retied monument. Ramsey County Surveyor's Office
July 9, 1997	Set a 20 in. cast iron monument. Ramsey County Surveyor's Office
July 24, 1997	Cemented monument. Ramsey County Surveyor's Office
December 11, 1998	Tied monument. Ramsey County Surveyor's Office
July 28, 2005	Retied monument. Ramsey County Surveyor's Office
June 28, 2010	Retied monument. Ramsey County Surveyor's Office
May 15, 2015	Tied cast iron monument for removal during road reconstruction. Ramsey County Surveyor's Office
July 16, 2015	Set a 20 inch "Ramsey County" cast iron monument within a cast iron manhole assembly using construction offsets and local tiest to replace the monument that was removed during road reconstruction. Tied new monument. Ramsey County Surveyor's Office