

MONUMENT 248

CERTIFICATE OF LOCATION OF GOVERNMENT CORNER

East Quarter Corner of Section 26, Township 30 North, Range 22 West, County of Ramsey, State of Minnesota.

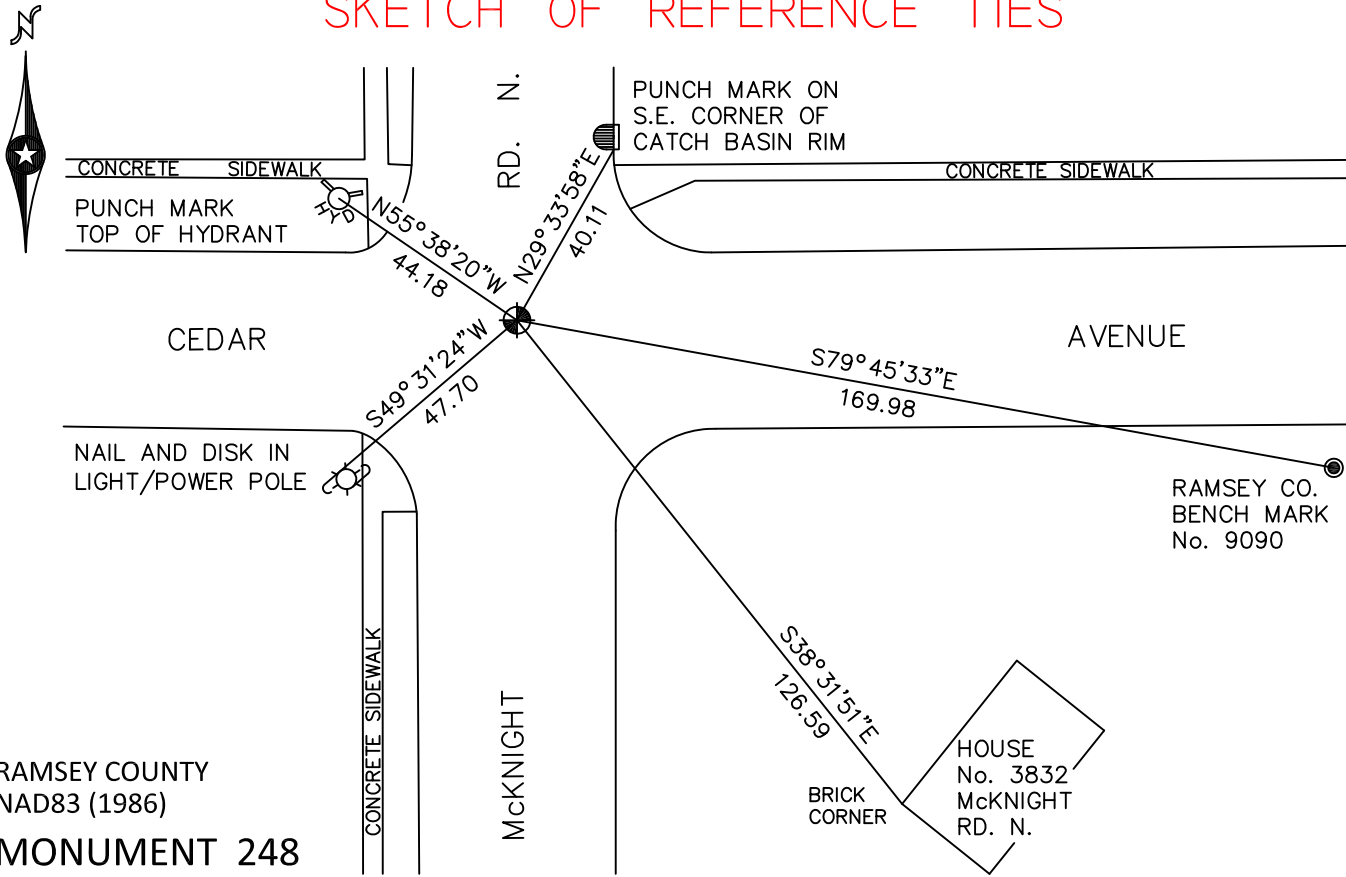
At the corner location shown on the sketch

On June 28, 2010 found a cast iron monument, within a cast iron manhole assembly.

left monument as found raised/lowered monument removed monument (explain)

On _____ placed a _____

SKETCH OF REFERENCE TIES



RAMSEY COUNTY
NAD83 (1986)

MONUMENT 248

X= 597734.219 (Easting)
Y= 197327.760 (Northing)

ALL DISTANCES ARE SHOWN IN U.S. SURVEY FEET.
BEARINGS ARE FOR TIE REFERENCE PURPOSES ONLY.

Statements of evidence relative to this corner are on the following page.

I hereby certify that this document has been prepared by me or under my direct supervision this _____ day of _____, 20____.

Minnesota License No. _____

- County Surveyor Deputy County Surveyor Land Surveyor

OFFICE OF COUNTY SURVEYOR
County of Ramsey

I hereby certify that this document was filed in the County Surveyor's office this _____ day of _____, 20____.

Michael D. Fiebiger, P.L.S.
Ramsey County Surveyor

MONUMENT 248

Found a P.K. nail and common nail. Dug a 1 ft. square by 3.7 ft. deep hole and found nothing, May 20, 1975.

Placed a cast iron monument 0.02 ft. north and 0.13 ft. east, June 12, 1975.

Tied monument, February 12, 1976.

Retied monument, June 21, 1991.

Retied monument, November 17, 1998.

Monument lowered and a cast iron manhole assembly placed over monument, July 18, 2005.

Tied monument, July 28, 2005.

Retied monument, June 28, 2010.