

MONUMENT 247

CERTIFICATE OF LOCATION OF SECTION SUBDIVISION MONUMENT

Center of Section 26, Township 30 North, Range 22 West, County of Ramsey, State of Minnesota.

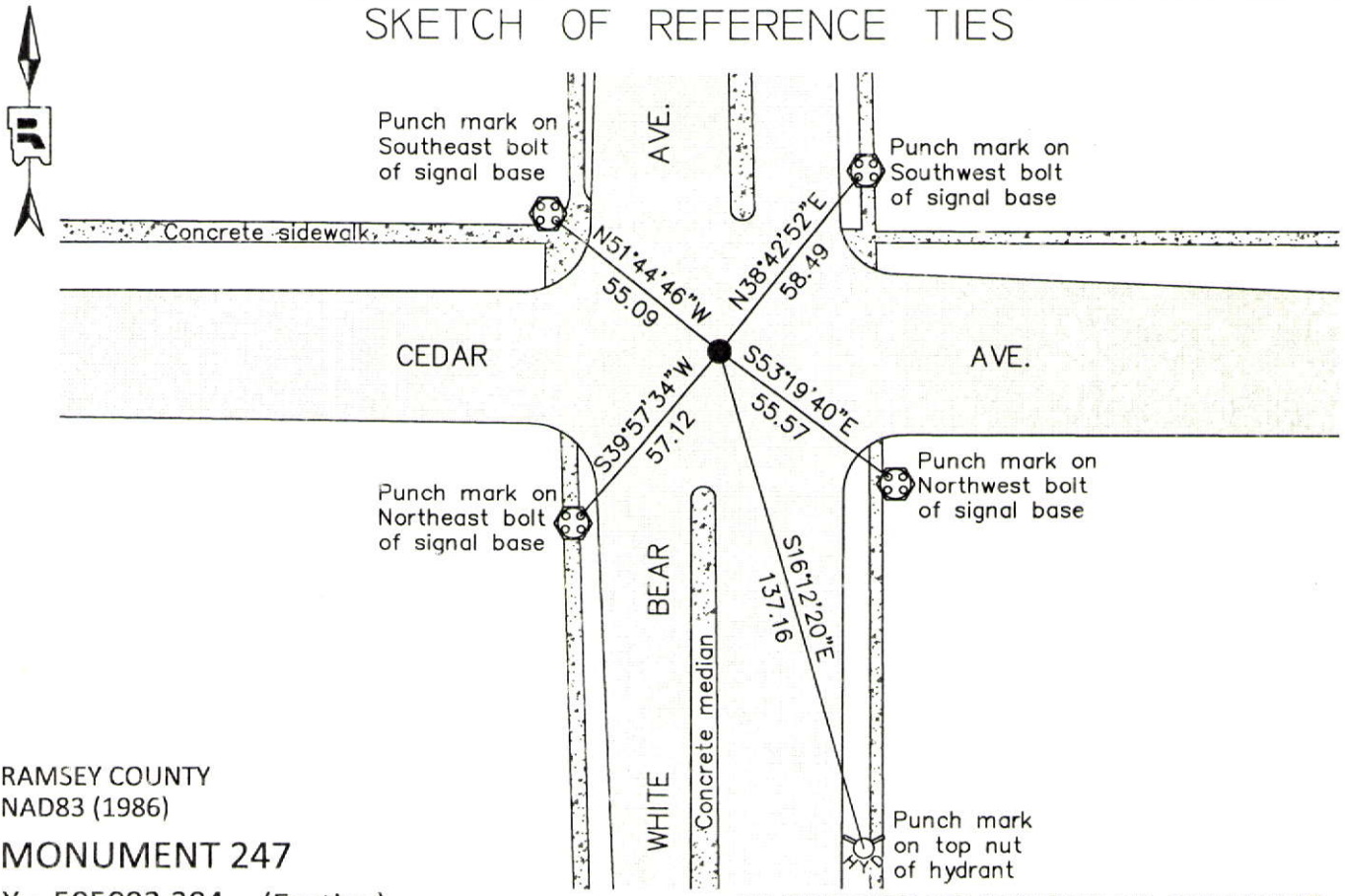
At the corner location shown on the sketch

On May 14, 2012 found 1-1/4 in. solid rod, within a cast iron manhole assembly.

left monument as found raised/lowered monument removed monument (explain)

On _____ placed a _____

SKETCH OF REFERENCE TIES



RAMSEY COUNTY
NAD83 (1986)
MONUMENT 247

X= 595092.204 (Easting)
Y= 197339.214 (Northing)

ALL DISTANCES ARE SHOWN IN U.S. SURVEY FEET.
BEARINGS ARE FOR TIE REFERENCE PURPOSES ONLY.

Statements of evidence relative to this corner are on the following page.

I hereby certify that this document was prepared by me or under my direct supervision and that I am a duly Licensed Land Surveyor under the laws of the State of Minnesota.

Daniel D. Baar 12-15-14
Daniel D. Baar Date
Minnesota License No. 45816

County Surveyor Land Surveyor
 Deputy County Surveyor

OFFICE OF COUNTY SURVEYOR
County of Ramsey

I hereby certify that this document was filed in the County Surveyor's office this 15th day of December, 20 14.

Craig W. Hinzman
Craig W. Hinzman, L.S.
Ramsey County Surveyor

MONUMENT 247

Center of Section 26, Township 30 North, Range 22 West

Fixed Center of Section 26 by intersection, tied it and set monument, August, 1896.

Checked monument, October, 1939.

Checked monument, February, 1946.

JOHN E. BLOMQUIST FIRST ADDITION plat shows an iron monument at the Center of Section, May 8, 1947.

SUNNYDALE plat shows an iron monument at the Center of Section, December 19, 1952.

Checked monument, July, 1967.

Found a hole in the concrete pavement. Hole matched County Highway Department ties. Placed a cast iron cap and bolt monument, July 10, 1975.

Tied monument, June 21, 1991.

Retied monument, December 3, 1998.

Retied monument, July 12, 2005.

Retied monument, July 1, 2010.

Tied monument for removal during road reconstruction, April 4, 2012.

Removed cast iron cap and bolt monument; found 1-1/4 in. solid rod down 1.3 ft. below finished grade of concrete surface. Solid rod was S37°31'13"E 0.09 ft. of cast iron cap and bolt monument. Tied 1-1/4 in. solid rod. Cast iron man hole assembly was placed over monument by others, May 14, 2012.