

# MONUMENT 242

## CERTIFICATE OF LOCATION OF FOUND MONUMENT

East Quarter of Section 29, Township 30 North, Range 22 West, County of Ramsey,  
State of Minnesota.

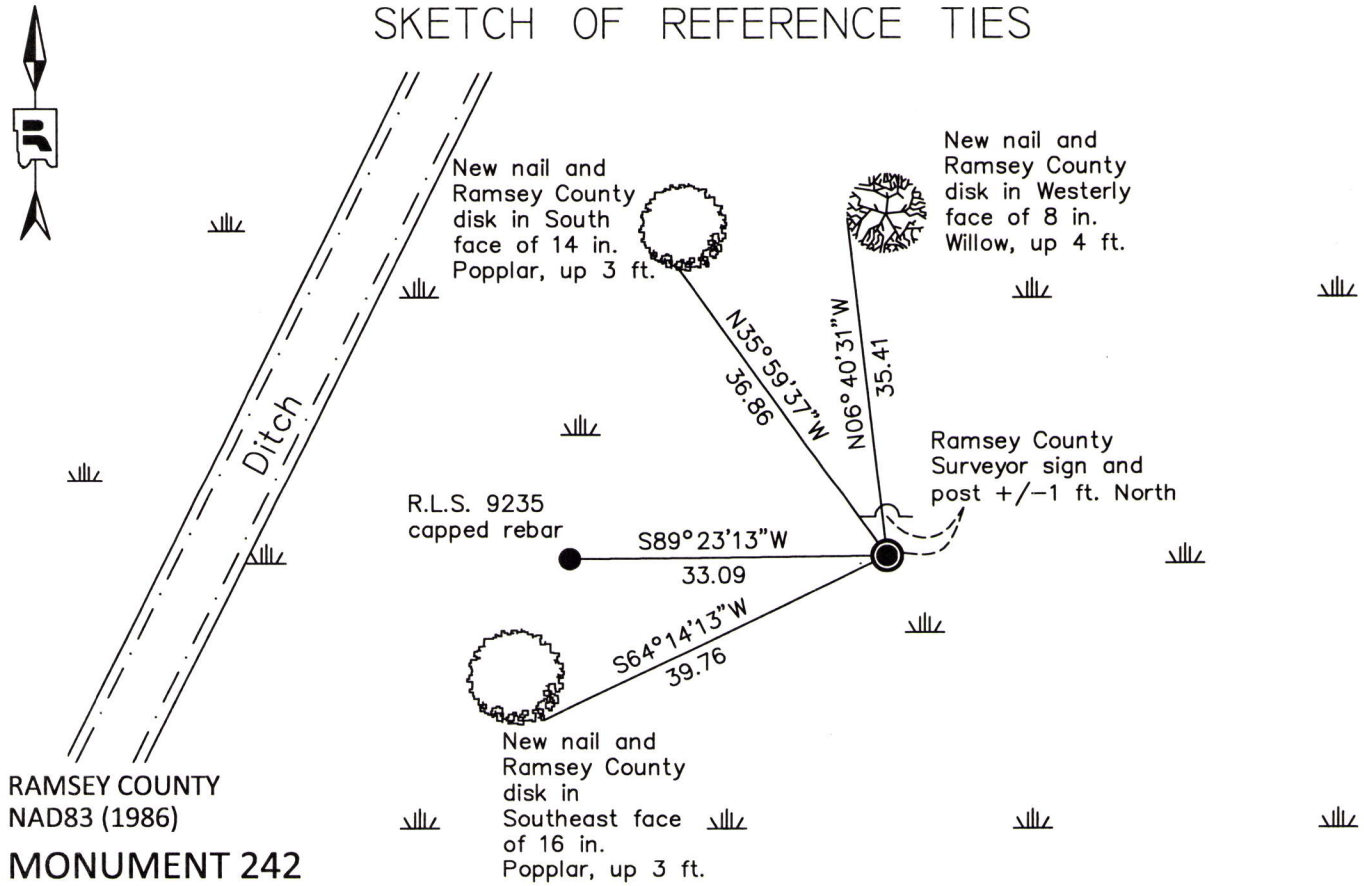
At the corner location shown on the sketch

On October 12, 2012 found a 1-1/2 in. open iron pipe monument, up 0.2 ft., in wetland.

left monument as found       raised/lowered monument       removed monument (explain)

On October 12, 2012 placed a 5/8 in. by 14 in. long rebar with a Ramsey County cap inside of  
1-1/2 in. iron pipe.

### SKETCH OF REFERENCE TIES



X= 581891.048 (Easting)  
Y= 197315.723 (Northing)

ALL DISTANCES ARE SHOWN IN U.S. SURVEY FEET.  
BEARINGS ARE FOR TIE REFERENCE PURPOSES ONLY.

Statements of evidence relative to this corner are on the following page.

I hereby certify that this document was prepared by me or under my direct supervision and that I am a duly Licensed Land Surveyor under the laws of the State of Minnesota.

Daniel D. Baar      10-28-14  
Daniel D. Baar      Date  
Minnesota License No. 45816

County Surveyor  
 Deputy County Surveyor       Land Surveyor

OFFICE OF COUNTY SURVEYOR  
County of Ramsey

I hereby certify that this document was filed in the County Surveyor's office this 28<sup>th</sup> day of October, 20 14.

Craig W. Minzman  
Craig W. Minzman, L.S.  
Ramsey County Surveyor

# MONUMENT 242

East Quarter of Section 29, Township 30 North, Range 22 West

Corner in lake, December 7, 1847.

In establishing the 1/4 Corner between Sections 28 and 29, ran straight line North and South, prorated and fixed 1/4 Corner in Lambert Lake, January, 1900.

Iron monument shown on plat of EDGERTON GROVE, November 9, 1939.

Iron monument shown on plat of DAVIDSON SEVENTH SUBDIVISION, April 25, 1940.

Iron monument shown on plat of EDGERTON GROVE PLAT 3, May 13, 1947.

Found 1" iron pipe up +/-1 ft., December 15, 1976.

Found 1-1/2 in. (outer diameter) open iron pipe, up 0.2 ft., badly rusted. Placed a 5/8 in. by 14 in. rebar with a plastic "Ramsey County" cap inside. Tied pipe, and placed a Ramsey County sign and post +/-1 ft. North, October 12, 2012.