

MONUMENT 240

CERTIFICATE OF LOCATION OF GOVERNMENT CORNER

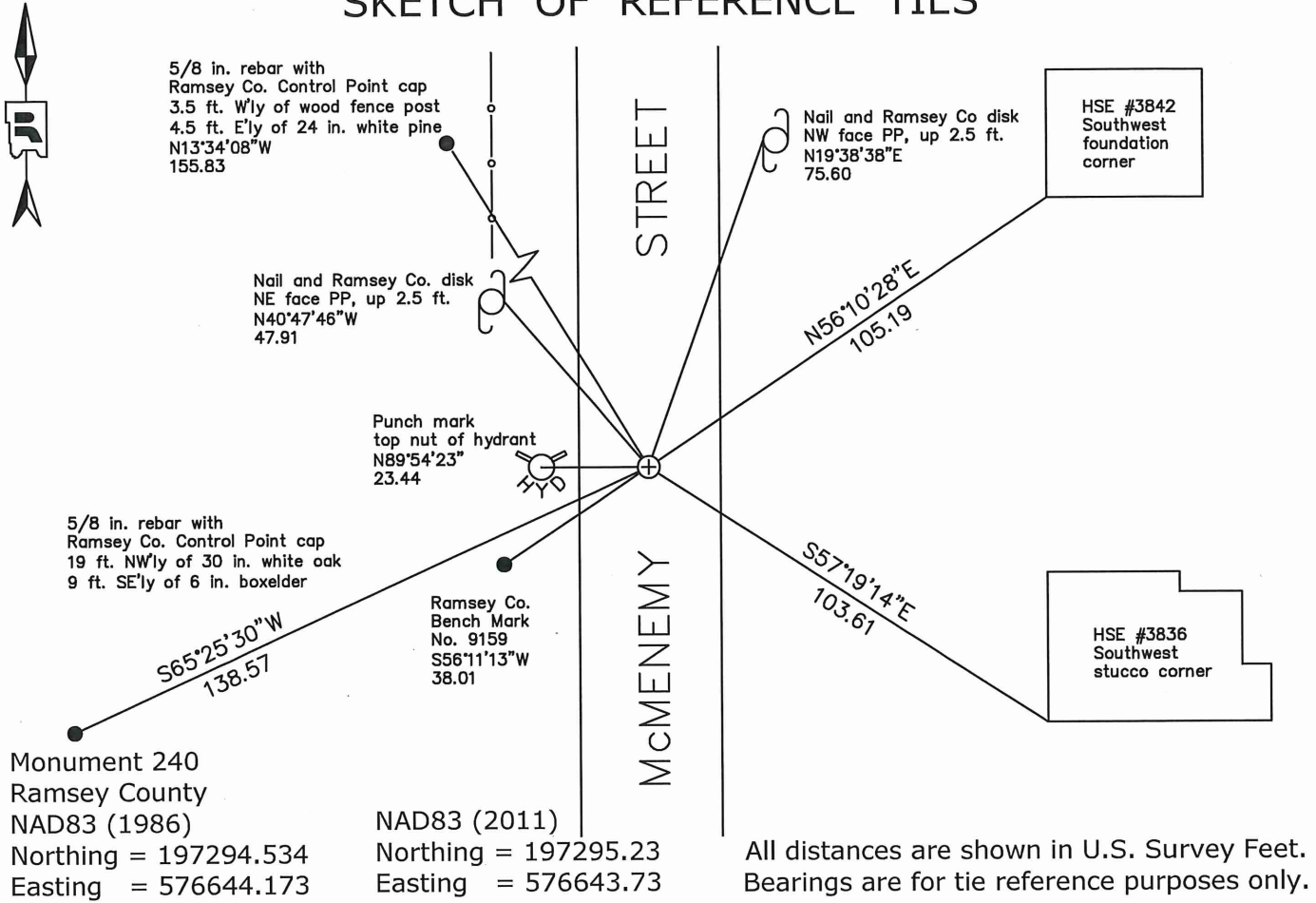
West 1/4 of Section 29, Township 30 North, Range 22 West, County of Ramsey, State of Minnesota.

At the corner location shown on the sketch

- On April 29, 2019 found a cast iron monument, within a cast iron manhole.

- On August 9, 2019 placed a 5/8 inch X 14 inch rebar with 3 inch aluminum cap stamped "Ramsey County Surveyor", flush in new bituminous road.

SKETCH OF REFERENCE TIES



Statements of evidence relative to this corner are on the following page.

I hereby certify that this survey, plan, or report was prepared by me or under my direct supervision, that I am a duly Licensed Land Surveyor under the laws of the state of Minnesota, and that this certificate is correct and complete to the best of my knowledge and belief.

Devin R. Ball 12/15/21
 Devin R. Ball Date
 Deputy County Surveyor
 Minnesota License No. 56023

OFFICE OF COUNTY SURVEYOR
 County of Ramsey

I hereby certify that this document was filed in the County Surveyor's office this 21st day of December, 20 21.

Daniel D. Baar
 Daniel D. Baar
 Ramsey County Surveyor
 Minnesota License No. 45816

MONUMENT 240

West 1/4 of Section 29, Township 30, Range 22

December 13, 1847	North between Sections 29 and 30, set 1/4 section post at 40.00 chains. B. Oak 12 S. 38.5 W. 29 B. Oak 10 N. 41 E. 31 Isaac N. Higbee Deputy Surveyor
1895	In establishing the 1/4 corner between Sections 29 and 30, found iron stake at 1/4 corner. Government witness trees gone. Retied it and set monument.
Unknown date	Found iron monument and set ties. Ramsey County Engineer
June 24, 1974	Found a 2 in. diameter by 2 ft. long solid iron, bent over. Dug down 0.05 ft. and found spike toward tie; dug down 0.1 ft. and found spike that matched old ties; dug down to bottom of 2 in. iron and up-righted, the iron then matched ties. Placed a cast iron monument using old ties and bottom of a 2 in. iron. Ramsey County Surveyor's Office
September 11, 1974	Tied monument. Ramsey County Surveyor's Office
December 20, 1991	Retied monument Ramsey County Surveyor's Office
May 15, 2001	Retied monument. Ramsey County Surveyor's Office
July 3, 2001	Lowered monument 18 in. Ramsey County Surveyor's Office
July 15, 2001	Set P.K. nails and manhole assembly. Ramsey County Surveyor's Office
March 14, 2005	Tied monument. Ramsey County Surveyor's Office
June 17, 2010	Retied monument. Ramsey County Surveyor's Office
July 10, 2015	Found a cast iron monument within a cast iron manhole assembly. All ties present and in good condition. Ramsey County Surveyor's Office
April 29, 2019	Found a cast iron monument within a cast iron manhole assembly in road. All ties found and in good condition. Checked local ties and established offsets prior to removal of the monument and manhole assembly during road construction. Ramsey County Surveyor's Office
August 9, 2019	Placed a 5/8 inch X 14 inch rebar with 3 inch aluminum cap stamped "Ramsey County Surveyor", flush in new bituminous road using offsets and recorded local ties. Ramsey County Surveyor's Office