

MONUMENT 24

CERTIFICATE OF LOCATION OF FOUND MONUMENT

NOTE: TWO LOCATIONS FOR THIS CORNER HAVE BEEN PERPETUATED (SEE BELOW)

North Quarter Corner of Section 1, Township 30 North, Range 22 West, County of Ramsey, State of Minnesota.

At the corner location shown on the sketch

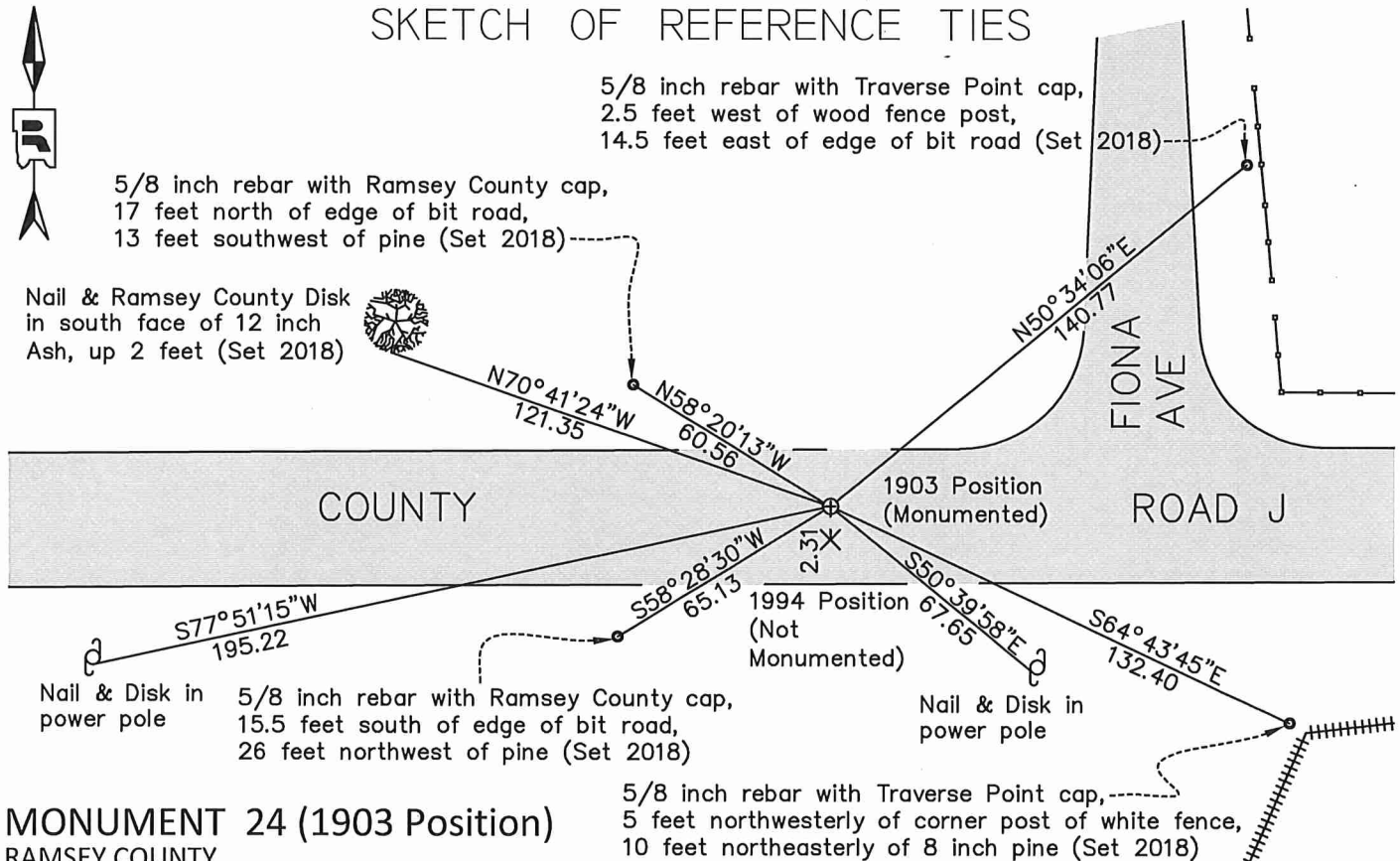
On May 25, 2018 found a 3/4 inch open iron pipe at grade in bituminous road.

left monument as found raised/lowered monument removed monument (explain)

On July 27, 2018 placed a 5/8 inch x 14 inch rebar with 3 inch aluminum cap stamped

"Ramsey County Surveyor", flush in new bituminous roadway.

SKETCH OF REFERENCE TIES



MONUMENT 24 (1903 Position)

RAMSEY COUNTY

NAD83 (1986)

NAD83 (2011)

Northing = 221531.143

Northing = 221531.614

Easting = 600302.741

Easting = 600302.297

ALL DISTANCES ARE SHOWN IN U.S. SURVEY FEET. BEARINGS ARE FOR TIE REFERENCE PURPOSES ONLY.

Statements of evidence relative to this corner are on the following page.

I hereby certify that this survey, plan, or report was prepared by me or under my direct supervision, that I am a duly Licensed Land Surveyor under the laws of the state of Minnesota, and that this certificate is correct and complete to the best of my knowledge and belief.

Daniel D. Baar 2-23-21

Daniel D. Baar

Date

County Surveyor

Minnesota License No. 45816

OFFICE OF COUNTY SURVEYOR
County of Ramsey

I hereby certify that this document was filed in the County Surveyor's office this 23rd day of February, 20 21.

Daniel D. Baar

Daniel D. Baar, L.S.

Ramsey County Surveyor

MONUMENT 24

North 1/4 Corner of Section 1, Township 30, Range 22

January 1903	In establishing the 1/4 Corner on the North of Section 1, ran straight line East and West and prorated. Ramsey County Remonumentation Survey
Dec. 22, 1903	Set monument. Ramsey County Remonumentation Survey
April 1966	Monument checked. Ramsey County Engineering
May 1974	Found a granite monument (1903 position), down 0.3 feet. Placed a cast iron cap and bolt over granite monument and tied out. Ramsey County Surveyor's Office
Dec. 28, 1992	Found a granite monument (1903 position), flush, and retied. Ramsey County Surveyor's Office
July 27, 1994	Granite monument removed during reconstruction of road in 1993. Granite monument (1903 position) determined not to be on line. A new position computed and marked with P.K. nails. Ramsey County Surveyor's Office
October 1994	Set a 20 inch cast iron monument at on-line position. Set P.K. nails for 1903 position and left in place. Ramsey County Surveyor's Office
October 1995	Removed 20 inch cast iron monument and set a 20 inch cast iron monument marked "3RD CORRECTION LINE" at 1994 position, 2.31 feet south of original granite monument location (1903 position). Ramsey County Surveyor's Office
June 12, 1998	Short ties checked. Ramsey County Surveyor's Office
Sept. 22, 1998	Found P.K. nail at original granite monument location (1903 position) and set a 1 inch iron pipe. Ramsey County Surveyor's Office
June 11, 2004	Retied Monument at 1994 position. Ramsey County Surveyor's Office
October 28, 2009	Retied Monument at 1994 position. Ramsey County Surveyor's Office
May 25, 2018	Found a 3/4 inch open iron pipe (1903 position) at grade in bituminous roadway approximately 2.31 feet north of monument at 1994 position. Checked local ties using Monument Certificate of Location dated October 28, 2009, and established offsets for the iron pipe at the 1903 position prior to removal during road construction. Ramsey County Surveyor's Office
July 27, 2018	Placed a 5/8 inch x 14 inch rebar with 3 inch aluminum cap stamped "Ramsey County Surveyor" at 1903 position, flush in new bituminous roadway using construction offsets and recorded ties. Ramsey County Surveyor's Office
April 4, 2019	Confirmed that cast iron monument at the 1994 position is no longer in place. Ramsey County Surveyor's Office
September 1, 2020	Monument and ties are in place for the 1903 position. Ramsey County Surveyor's Office.