

MONUMENT 233

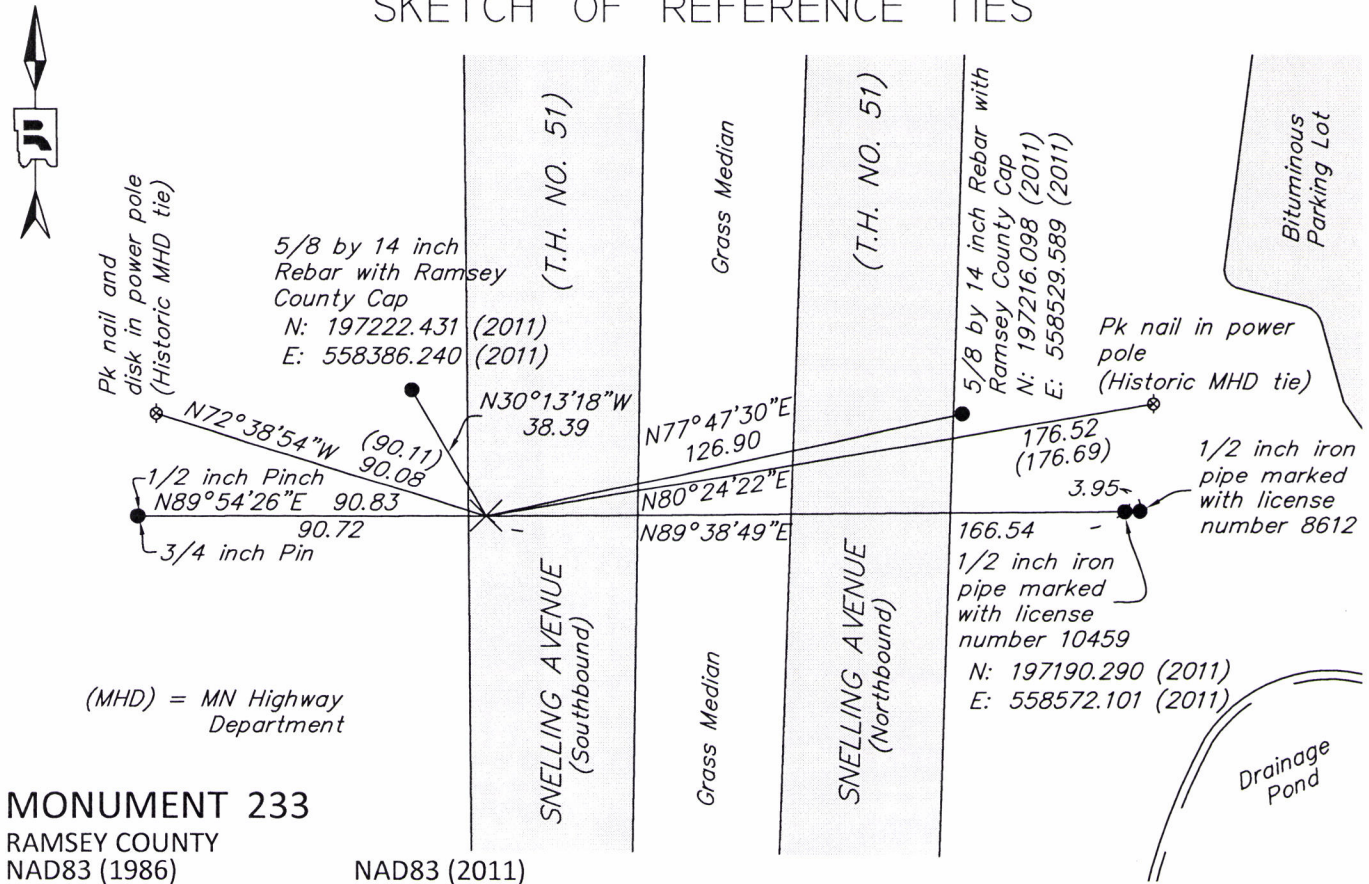
CERTIFICATE OF LOCATION OF PERPETUATED MONUMENT

Center of Section 27, Township 30 North, Range 23 West, County of Ramsey, State of Minnesota.

At the corner location shown on the sketch

- On 8-25-2016 found historic ties of record; located ties and local survey monumentation to re-establish position of a previous drill hole in concrete road.
- left monument as found
 raised/lowered monument
 removed monument (explain)
- On 8-25-2016 placed two 5/8 by 14 inch rebars with "Ramsey County" caps as reference monuments.

SKETCH OF REFERENCE TIES



MONUMENT 233

RAMSEY COUNTY
 NAD83 (1986) NAD83 (2011)
 Northing = 197188.637 Northing = 197189.263
 Easting = 558405.921 Easting = 558405.561

ALL DISTANCES ARE SHOWN IN U.S. SURVEY FEET.
 BEARINGS ARE FOR TIE REFERENCE PURPOSES ONLY.

Statements of evidence relative to this corner are on the following page.

I hereby certify that this survey, plan, or report was prepared by me or under my direct supervision, that I am a duly Licensed Land Surveyor under the laws of the state of Minnesota, and that this certificate is correct and complete to the best of my knowledge and belief.

Daniel D. Baar 7-19-19
 Daniel D. Baar Date
 County Surveyor
 Minnesota License No. 45816

OFFICE OF COUNTY SURVEYOR
 County of Ramsey

I hereby certify that this document was filed in the County Surveyor's office this 19th day of July, 20 19.

Daniel D. Baar
 Daniel D. Baar, L.S.
 Ramsey County Surveyor

MONUMENT 233

Center of Section 27, Township 30, Range 23

Circa 1897	Ramsey County re-monumentation survey map shows at monument at center of section.
December, 1943	Checked Monument, Ramsey County Engineer's Office.
January, 1946	Checked Monument, Ramsey County Engineer's Office.
May, 1954	Checked Monument, Ramsey County Engineer's Office.
June, 1961	Retied Monument, Ramsey County Engineer's Office.
December 27, 1960	Notes provided to the Ramsey County Surveyor's Office by MNDOT show that a 6 inch stone monument was tied to five reference objects. Minnesota Highway Department.
Unknown date	Monument destroyed by State construction of Highway 51. Center of Section lands in South bound lane.
April 25, 1986	RLS #413 referenced "drill hole" as center of section.
June 5, 1986	NORTHWOODS plat referenced "star drill hole" as center of section.
August 25, 2016	Searched for and located plat, RLS and other boundary survey monuments east of the center of section along the east/west quarter line. Also, located the two remaining historic local ties from MHD (MN Highway Department, December 27, 1960). Placed two 5/8 by 14 inch rebar reference monuments, Ramsey County Surveyor's Office.
June 19, 2017	Drill hole position was re-established with StarNET (a least squares adjustment program) using record measurements, historic local ties of record, and record distances to the N, S, E, and W 1/4 corners. Position fit the plat, RLS and boundary survey monuments east of the center of section along the east/west quarter line, Ramsey County Surveyor's Office.