

# MONUMENT 22E

## CERTIFICATE OF LOCATION OF GOVERNMENT CORNER

Witness Monument to Meander Corner No. 7, Section 2, Township 30 North, Range 22 West, County of Ramsey, State of Minnesota.

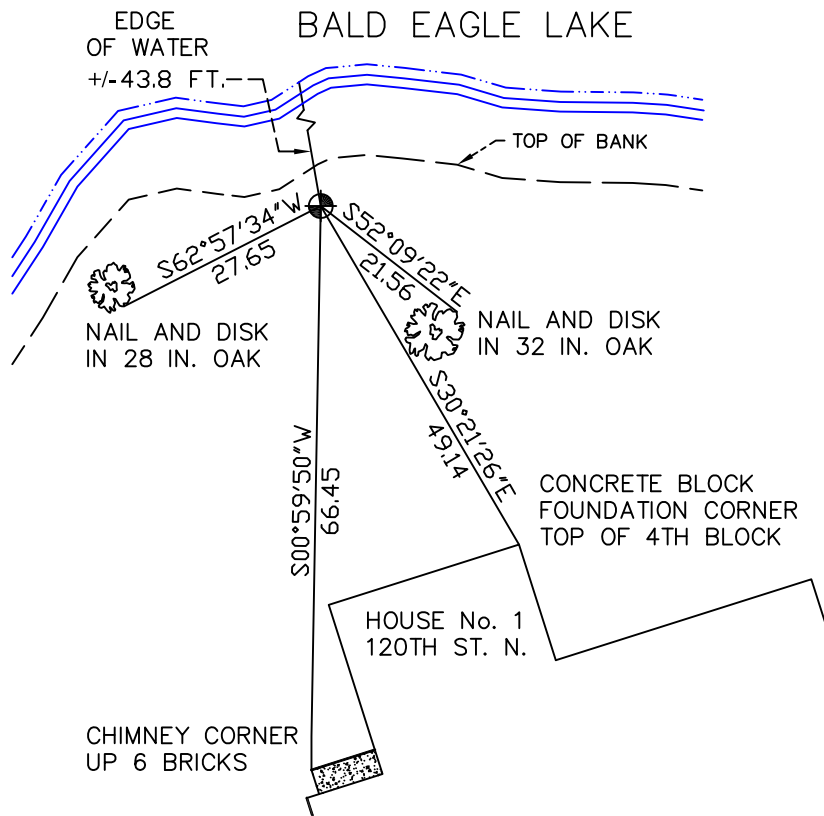
At the corner location shown on the sketch

On October 28, 2009 found a cast iron monument, (3066.35 east of  
monument 21SC), marked "WITNESS CORNER", flush.

left monument as found     lowered monument     removed monument (explain)

On \_\_\_\_\_ placed a \_\_\_\_\_

## SKETCH OF REFERENCE TIES



RAMSEY COUNTY  
 NAD83 (1986)  
 MONUMENT 22E

X= 595467.811 (Easting)  
 Y= 221515.775 (Northing)

ALL DISTANCES ARE SHOWN IN U.S. SURVEY FEET.  
 BEARINGS ARE FOR TIE REFERENCE PURPOSES ONLY.

Statements of evidence relative to this corner are on the following page(s).

I hereby certify that this document and the data contained herein was prepared by me or under my direct supervision this \_\_\_\_\_ day of \_\_\_\_\_, 20\_\_\_\_.

SIGNATURE

Minnesota License No. \_\_\_\_\_

- County Surveyor  
 Deputy County Surveyor     Land Surveyor

OFFICE OF COUNTY SURVEYOR  
 County of Ramsey

I hereby certify that this document was filed in the County Surveyor's office on the \_\_\_\_\_ day of \_\_\_\_\_, 20\_\_\_\_.

SIGNATURE

Michael D. Fiebiger, P.L.S.  
 Ramsey County Surveyor

## MONUMENT 22E

Original granite monument set at M.C. No. 7 location, June, 1901.

Granite monument moved back to the east 12.35 ft., January, 1910.

Moved 50 ft. farther to the east of W.C. for a total of 62.35 ft., January, 1946.

Found 1 in. by 3 ft. solid iron, down 0.3 ft., placed by Frank Kvidera. Replaced solid iron with a 20 in. cast iron monument, flush with surface, at the top of hill and tied out, May 6, 1974.

Retied monument, July 21, 1988.

Retied monument, September 22, 1998.

Retied monument, November 30, 2004.

Retied monument, October 28, 2009.