

MONUMENT 228

CERTIFICATE OF LOCATION OF GOVERNMENT CORNER

East Quarter Corner of Section 30, Township 30 North, Range 23 West, County of Ramsey, State of Minnesota.

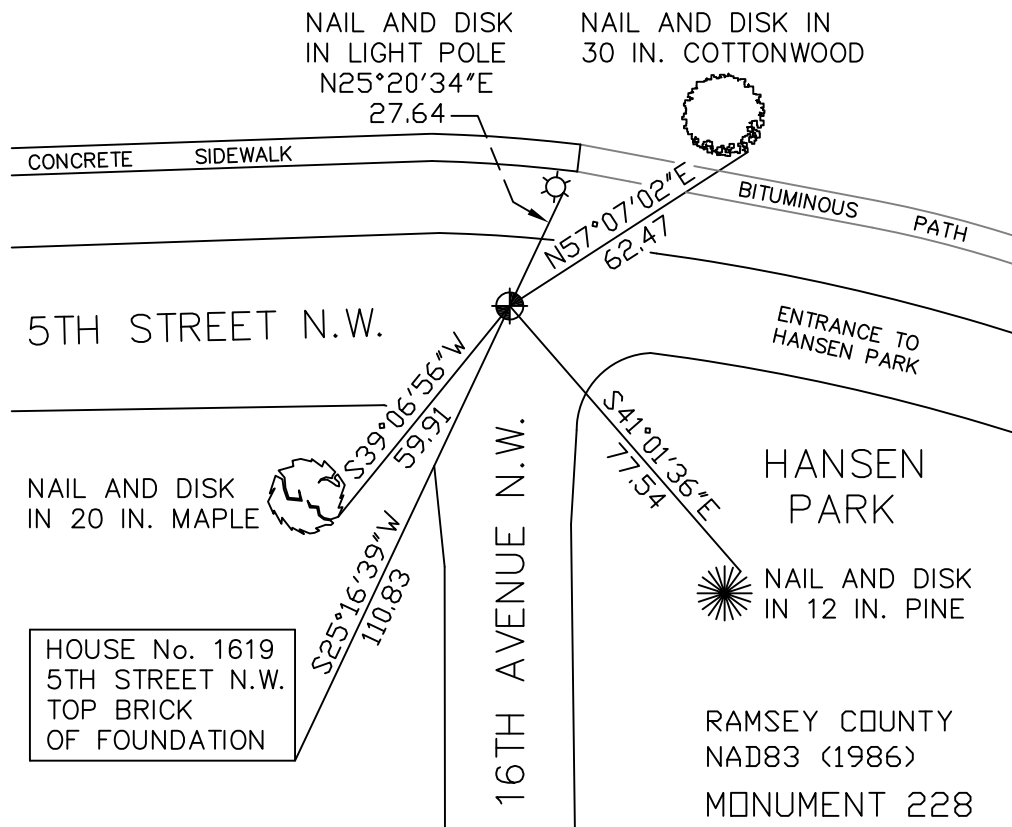
At the corner location shown on the sketch

On July 2, 2009 found a cast iron monument within a cast iron manhole assembly.

left monument as found lowered monument removed monument (explain)

On _____ placed a _____

SKETCH OF REFERENCE TIES



ALL DISTANCES ARE SHOWN IN U.S. SURVEY FEET.
BEARINGS ARE FOR TIE REFERENCE PURPOSES ONLY.

X= 545260.528 (Easting)
Y= 197143.874 (Northing)

Statements of evidence relative to this corner are on the following page(s).

I hereby certify that this document and the data contained herein was prepared by me or under my direct supervision this _____ day of _____, 20____.

SIGNATURE

Minnesota License No. _____

- County Surveyor
 Deputy County Surveyor Land Surveyor

OFFICE OF COUNTY SURVEYOR
County of Ramsey

I hereby certify that this document was filed in the County Surveyor's office on the _____ day of _____, 20____.

SIGNATURE

Michael D. Fiebiger, P.L.S.
Ramsey County Surveyor

MONUMENT 228

Found a cast iron monument, flush, tied, July 12, 1974.

Cast iron monument, down +/- 0.25 ft., April 1, 1991.

Street appears to be rebuilt; dug where I got a reading; no monument found; started to locate irons, October 24, 2002.

Found a 3/4 in. inside diameter iron, down 2.3 ft.; pounded iron down 3 in.; set a 20 inch cast iron monument on top of iron and a cast iron manhole assembly around monument, May 27, 2003.

Tied monument, July 1, 2003.

Retied monument, July 2, 2009.