

MONUMENT 225N

CERTIFICATE OF LOCATION OF GOVERNMENT CORNER

Meander Corner No. 6, Section 24, Township 30 North, Range 22 West, County of Ramsey, State of Minnesota.

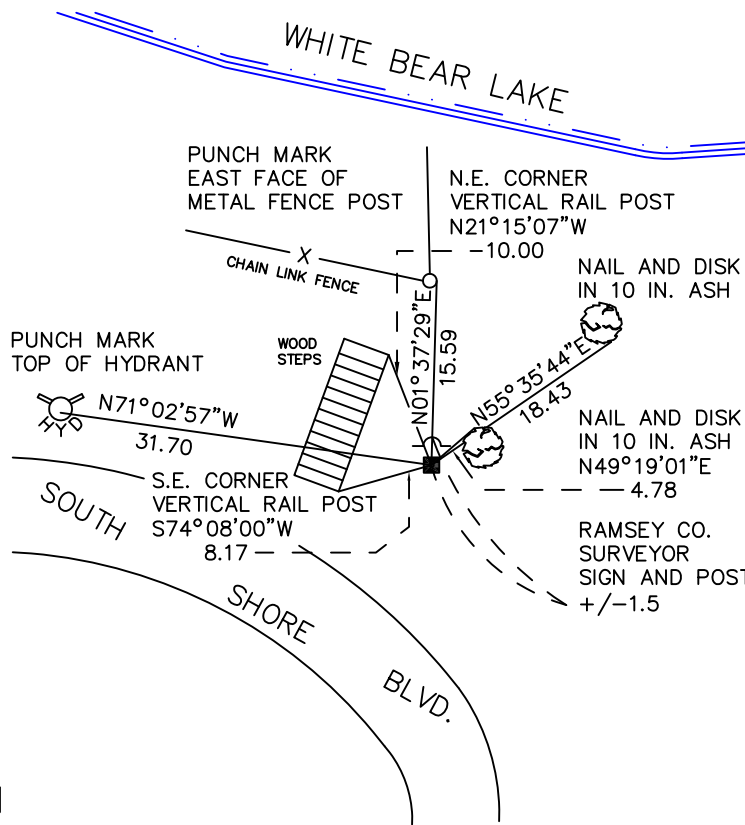
At the corner location shown on the sketch

On July 2, 2010 found a granite monument, down 0.75 feet.

left monument as found raised/lowered monument removed monument (explain)

On _____ placed a _____

SKETCH OF REFERENCE TIES



RAMSEY COUNTY
NAD83 (1986)

MONUMENT 225N

X= 602980.188 (Easting)
Y= 200380.607 (Northing)

ALL DISTANCES ARE SHOWN IN U.S. SURVEY FEET.
BEARINGS ARE FOR TIE REFERENCE PURPOSES ONLY.

Statements of evidence relative to this corner are on the following page.

I hereby certify that this document has been prepared by me or under my direct supervision this _____ day of _____, 20____.

Minnesota License No. _____

- County Surveyor Deputy County Surveyor Land Surveyor

OFFICE OF COUNTY SURVEYOR
County of Ramsey

I hereby certify that this document was filed in the County Surveyor's office this _____ day of _____, 20____.

Michael D. Fiebiger, P.L.S.
Ramsey County Surveyor

MONUMENT 225N

Found a granite monument, May, 1974.

Found a granite on side of embankment. Placed sign and post +/-1 ft. northeasterly of granite monument, tied monument, September 18, 1996.

Retied monument, August 27, 1999.

Retied monument, March 29, 2005.

Retied monument, July 2, 2010.