

MONUMENT 224N

CERTIFICATE OF LOCATION OF SECTION SUBDIVISION MONUMENT

A Witness Monument on the North-South Quarter line South of Center of Section 24,
Township 30 North, Range 22 West, County of Ramsey, State of Minnesota.

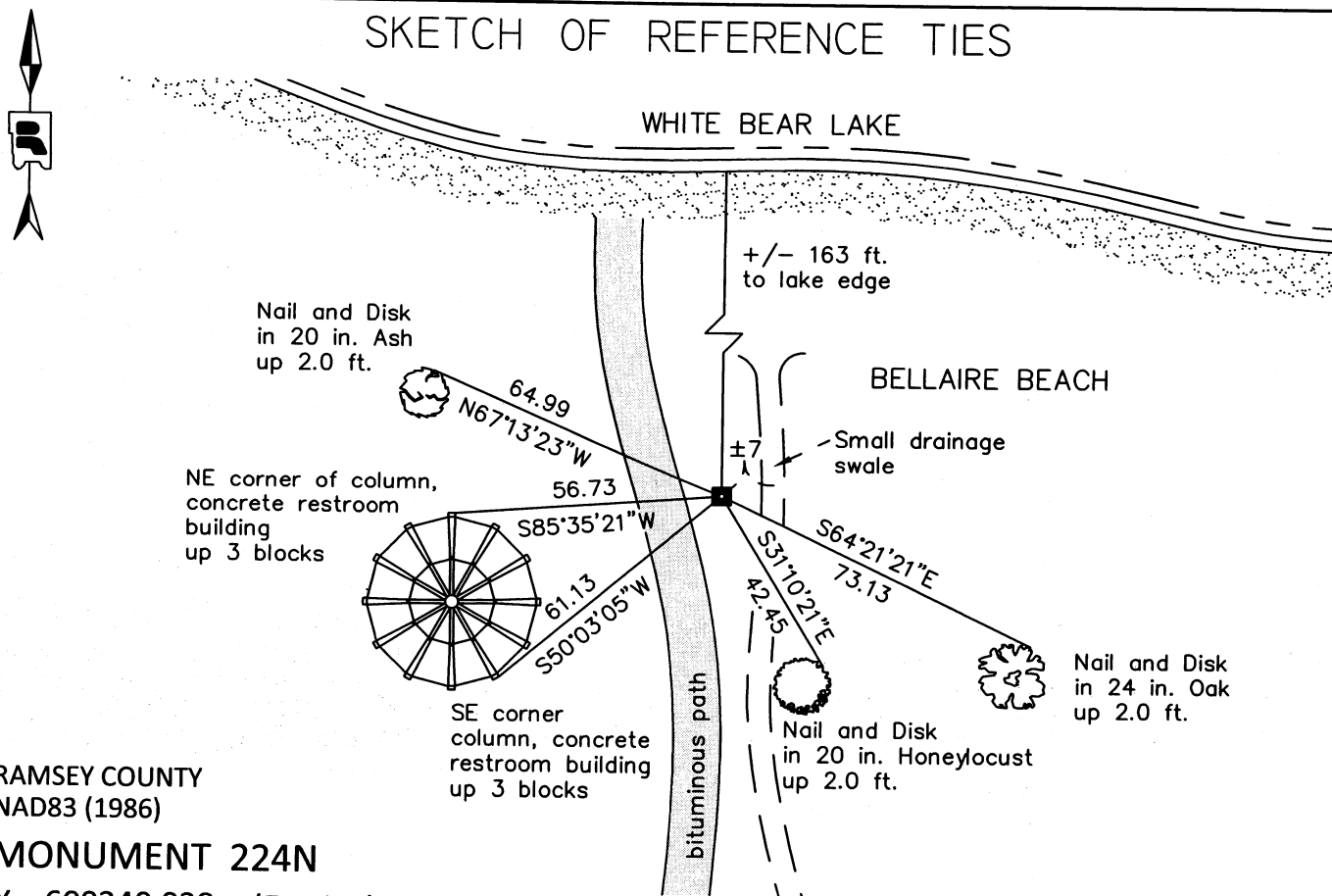
At the corner location shown on the sketch

On May 11, 2011 found a 6 in. by 7 in. granite monument with a drill hole, down 1.25 ft.

left monument as found raised/lowered monument removed monument (explain)

On _____ placed a _____

SKETCH OF REFERENCE TIES



RAMSEY COUNTY
NAD83 (1986)

MONUMENT 224N

X= 600340.038 (Easting)
Y= 202194.084 (Northing)

ALL DISTANCES ARE SHOWN IN U.S. SURVEY FEET.
BEARINGS ARE FOR TIE REFERENCE PURPOSES ONLY.

Statements of evidence relative to this corner are on the following page.

I hereby certify that this document was prepared by me or under my direct supervision and that I am a duly Licensed Land Surveyor under the laws of the State of Minnesota.

Daniel D. Baar 7-31-12
Daniel D. Baar Date
Minnesota License No. 45816

County Surveyor
 Deputy County Surveyor Land Surveyor

OFFICE OF COUNTY SURVEYOR
County of Ramsey

I hereby certify that this document was filed in the County Surveyor's office this 31st day of JULY, 20 12.

Craig W. Hinzman
Craig W. Hinzman, L.S.
Ramsey County Surveyor

MONUMENT 224N

Witness Monument to the Center of Section 24, Township 30 North, Range 22 West

Fixed the Center of Section 24 by intersection, January 20, 1902.

Fixed point 439.30 S. of Center on $\frac{1}{4}$ Section line, set monument at tied in point, December 3, 1902.

Searched for Granite Monument. Found a 6 in. by 7 in. Granite Monument, down 1.25 ft.; tied monument, May 11, 2011.