

MONUMENT 223NWC

CERTIFICATE OF LOCATION OF GOVERNMENT CORNER

Witness Monument to Meander Corner No. 5, Section 23, Township 30 North, Range 22 West, County of Ramsey, State of Minnesota.

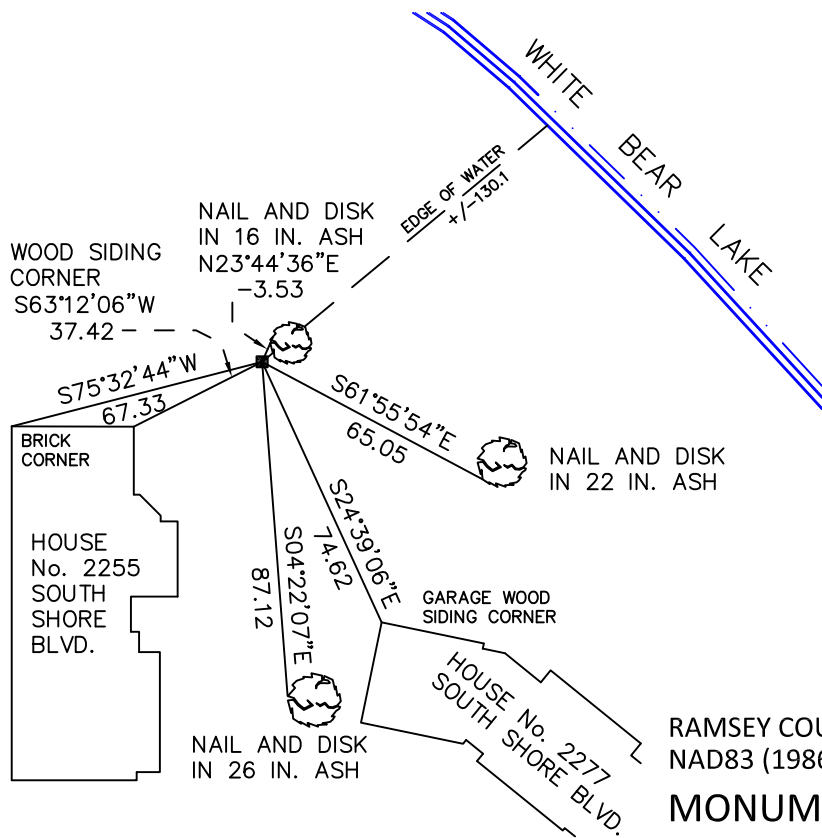
At the corner location shown on the sketch

On July 21, 2010 found a granite monument, down 0.5 feet.

left monument as found raised/lowered monument removed monument (explain)

On _____ placed a _____

SKETCH OF REFERENCE TIES



ALL DISTANCES ARE SHOWN IN U.S. SURVEY FEET.
BEARINGS ARE FOR TIE REFERENCE PURPOSES ONLY.

RAMSEY COUNTY
NAD83 (1986)
MONUMENT 223NWC
X= 597696.500 (Easting)
Y= 201944.351 (Northing)

Statements of evidence relative to this corner are on the following page.

I hereby certify that this document has been prepared by me or under my direct supervision this _____ day of _____, 20____.

Minnesota License No. _____

- County Surveyor Land Surveyor
 Deputy County Surveyor

OFFICE OF COUNTY SURVEYOR
County of Ramsey

I hereby certify that this document was filed in the County Surveyor's office this _____ day of _____, 20____.

Craig W. Hinzman, L.S.
Ramsey County Surveyor

MONUMENT 223NWC

Re-established Meander Corner No. 5, February 14, 1934.

Set a witness monument 48.0 ft. south of Meander Corner No. 5 and tied, May 8, 1934.

Found a granite monument flush, May 17, 1975.

Tied monument, April 5, 1984.

Retied monument, September 3, 1993.

Set a sign and post north; retied monument, August 27, 1999.

Retied monument, October 13, 2005.

Retied monument, July 21, 2010.