

MONUMENT 223N

CERTIFICATE OF LOCATION OF GOVERNMENT CORNER

North Witness Monument to the Southeast Corner of Section 23, Township 30 North,
Range 22 West, County of Ramsey, State of Minnesota.

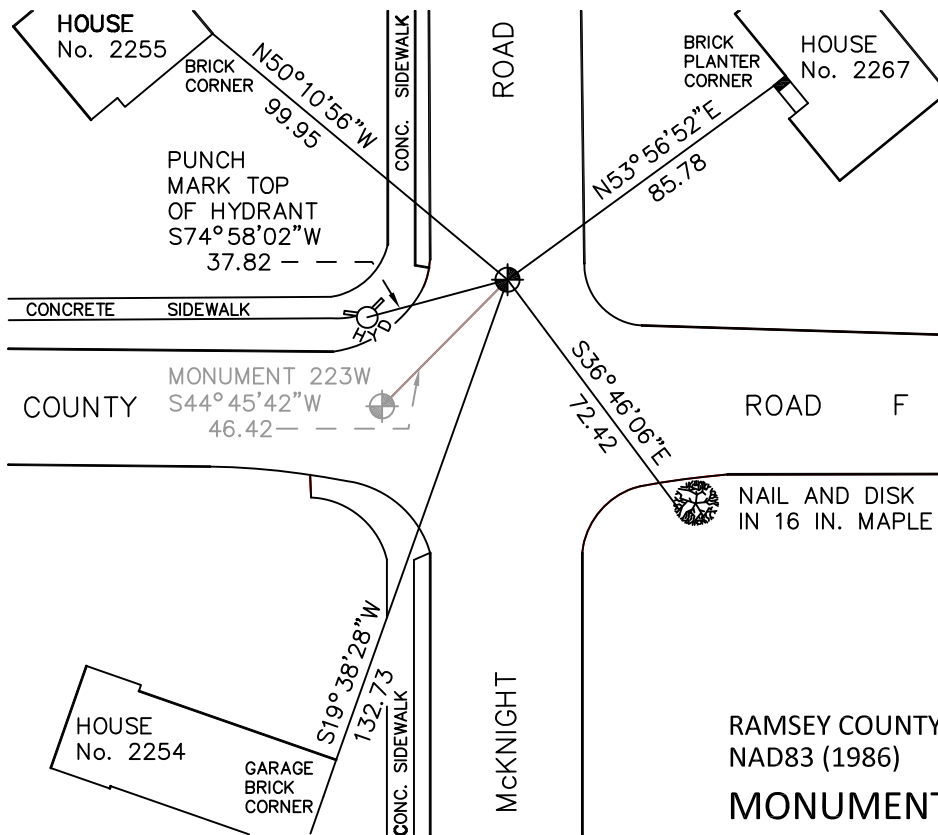
At the corner location shown on the sketch

On July 19, 2010 found a cast iron monument, down 0.1 feet.

left monument as found raised/lowered monument removed monument (explain)

On _____ placed a _____

SKETCH OF REFERENCE TIES



ALL DISTANCES ARE SHOWN IN U.S. SURVEY FEET.
BEARINGS ARE FOR TIE REFERENCE PURPOSES ONLY.

RAMSEY COUNTY
NAD83 (1986)
MONUMENT 223N

X= 597713.003 (Easting)
Y= 200002.748 (Northing)

Statements of evidence relative to this corner are on the following page.

I hereby certify that this document has been prepared by me or under my direct supervision this _____ day of _____, 20____.

MINNESOTA LICENSE NO. _____ SIGNATURE

- County Surveyor Land Surveyor
 Deputy County Surveyor

OFFICE OF COUNTY SURVEYOR
County of Ramsey

I hereby certify that this document was filed in the County Surveyor's office this _____ day of _____, 20____.

Michael D. Fiebiger, P.L.S.
Ramsey County Surveyor SIGNATURE

MONUMENT 223N

Manhole at intersection. See Survey Book No.1 for location check. Set a cast iron monument 33.00 ft. north of corner location, on the east line of the Southeast Quarter, August 25, 1975.

Tied monument, March 22, 1976.

Checked short ties, June 25, 1991.

Checked short ties, June 12, 1998.

Retied monument, March 29, 2005.

Retied monument, July 19, 2010.