

# MONUMENT 221

## CERTIFICATE OF LOCATION OF GOVERNMENT CORNER

Northeast Corner of Section 27, Township 30 North, Range 22 West, County of Ramsey, State of Minnesota.

At the corner location shown on the sketch

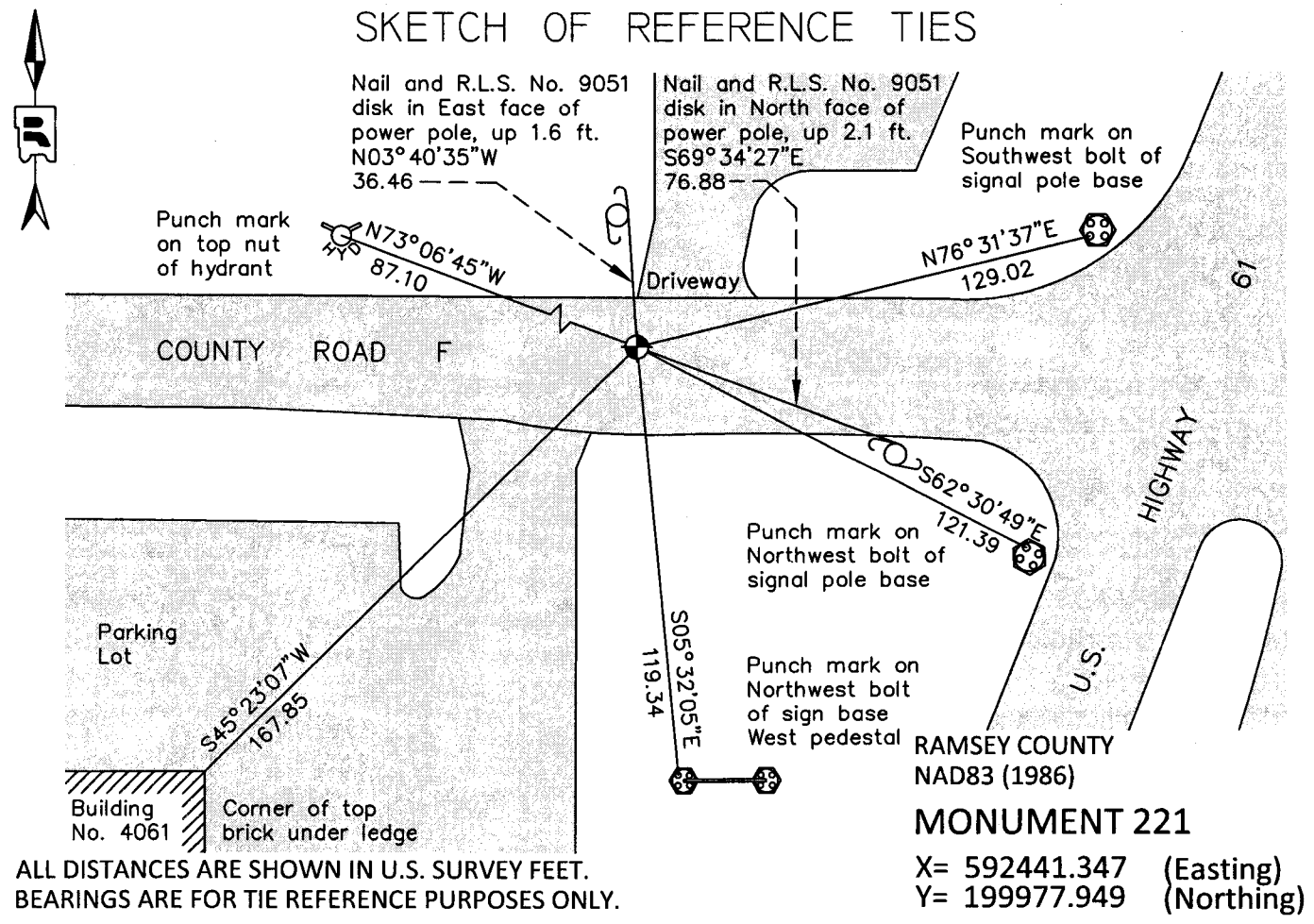
On August 5, 2013 found cast iron monument, down 0.15 ft. in bituminous road.

Tied out monument for removal during road re-construction.

left monument as found       raised/lowered monument       removed monument (explain)

On September 16, 2013 placed a "Ramsey County" cast iron monument within a cast iron manhole assembly; tied monument.

### SKETCH OF REFERENCE TIES



ALL DISTANCES ARE SHOWN IN U.S. SURVEY FEET.  
BEARINGS ARE FOR TIE REFERENCE PURPOSES ONLY.

Statements of evidence relative to this corner are on the following page.

I hereby certify that this document was prepared by me or under my direct supervision and that I am a duly Licensed Land Surveyor under the laws of the State of Minnesota.

Daniel D. Baar      10-24-13  
 Daniel D. Baar      Date  
 Minnesota License No. 45816

County Surveyor  
 Deputy County Surveyor       Land Surveyor

OFFICE OF COUNTY SURVEYOR  
 County of Ramsey

I hereby certify that this document was filed in the County Surveyor's office this 24th day of October, 2013.

Craig W. Hinzman  
 Craig W. Hinzman, L.S.  
 Ramsey County Surveyor

# MONUMENT 221

Northeast Corner of Section 27, Township 30 North, Range 22 West

Set post Corner to Sections 22, 23, 26 and 27, Bur Oak 12 S60°W 3.11, B. Oak 10 S84°E 1.27, December 7, 1847.

In establishing the Northeast Corner of Section 27, ran East from 1/4 Corner Government distance. Government witness trees gone, February, 1900.  
Set monument, March, 1900.

REARRANGEMENT OF WHITE BEAR PARK plat shows described corner as a "County Stone", June 21, 1915.

Monument checked, October, 1939.

Monument checked, February, 1946.

Monument checked, September, 1966.

Found granite monument, down 0.3 ft. No date given in field book.

Placed cast iron cap and bolt monument, June 4, 1974.

Tied monument, June 25, 1974.

Relocated monument and retied, May 12, 1982.

Checked ties, June 24, 1991.

Checked ties, June 12, 1998.

Retied monument, April 29, 2003.

Retied monument, October 13, 2005.

Retied monument, down +/-0.2 ft., July 28, 2009.

Tied "RAMSEY COUNTY" cast iron monument, down 0.15 ft. in bituminous road, for removal during road re-construction, August 5, 2013.

Removed "RAMSEY COUNTY" cast iron monument. Placed a new "RAMSEY COUNTY" cast iron monument within a cast iron manhole assembly; tied monument, September 16, 2013.