

MONUMENT 21E

CERTIFICATE OF LOCATION OF GOVERNMENT CORNER

Meander Corner No. 14 of Section 2, Township 30 North, Range 22 West, County of Ramsey, State of Minnesota.

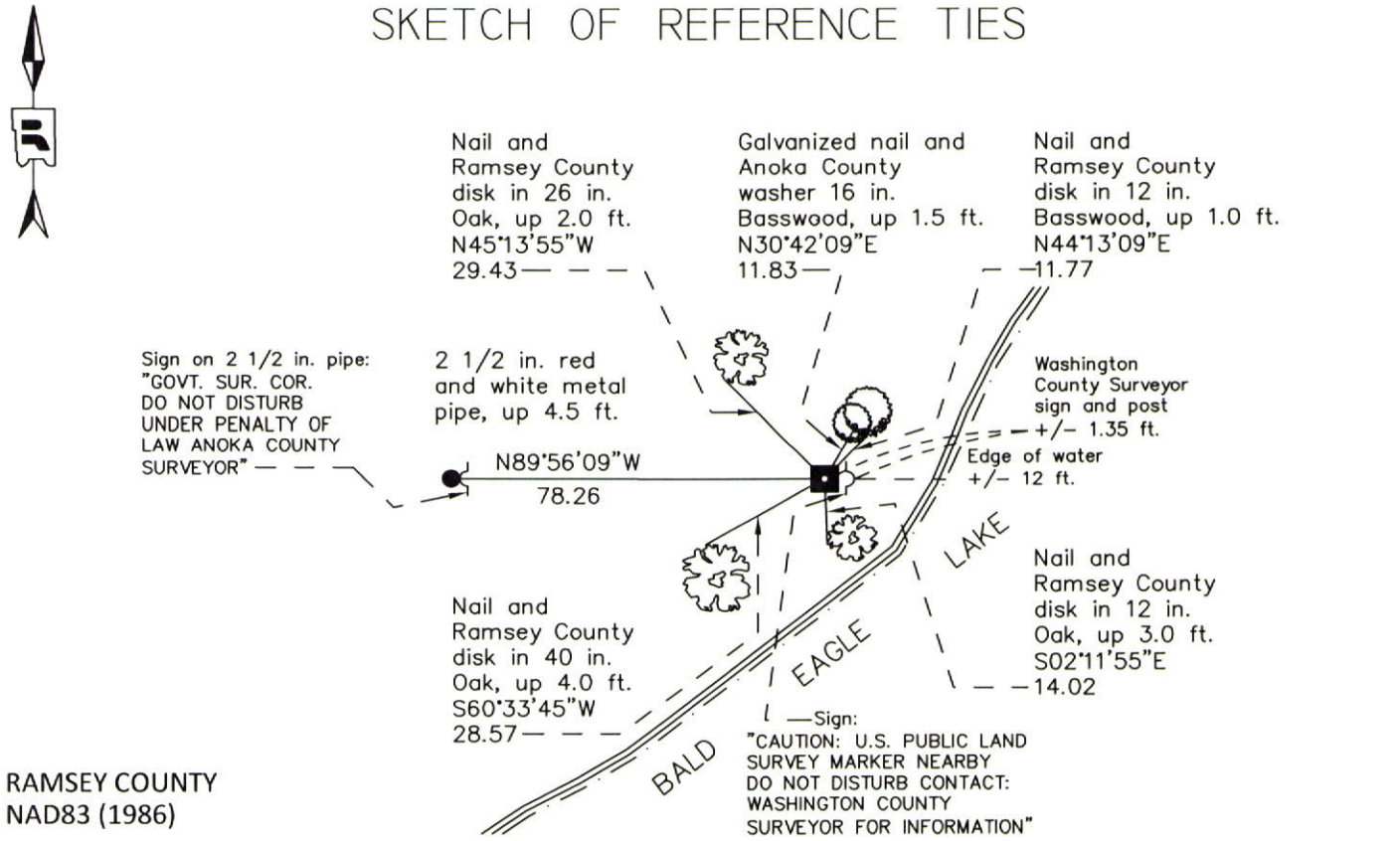
At the corner location shown on the sketch

On October 21, 2011 found a 6 in. x 8 in. granite monument with drill hole, flush.

left monument as found raised/lowered monument removed monument (explain)

On _____ placed a _____

SKETCH OF REFERENCE TIES



RAMSEY COUNTY
NAD83 (1986)

MONUMENT 21E

X= 593751.397 (Easting)
Y= 221525.705 (Northing)

ALL DISTANCES ARE SHOWN IN U.S. SURVEY FEET.
BEARINGS ARE FOR TIE REFERENCE PURPOSES ONLY.

Statements of evidence relative to this corner are on the following page.

I hereby certify that this document was prepared by me or under my direct supervision and that I am a duly Licensed Land Surveyor under the laws of the State of Minnesota.

Daniel D. Baar 12-30-14
Daniel D. Baar Date
Minnesota License No. 45816

County Surveyor Land Surveyor
 Deputy County Surveyor

OFFICE OF COUNTY SURVEYOR
County of Ramsey

I hereby certify that this document was filed in the County Surveyor's office this 30th day of December, 20 14.

Craig W. Hinzman
Craig W. Hinzman, L.S.
Ramsey County Surveyor

MONUMENT 21E

Meander Corner No. 14 of Section 2, Township 30 North, Range 22 West

Over lake & set a post at M. Cor., W. Ash 6 N30°E 8, Lind. 6 S25°W 7, Aug. 14, 1847.

In establishing Meander Corner No. 14, ran a straight line from Meander Corner No. 7 to N.W. Corner Section 2 and fixed Meander Corner No. 14. Government distance E. from N.W. Corner Section 2. No Government trees, Feb. 4, 1902. Set Mont., Dec.13, 1902.

Found granite up 0.2 ft., tied, May 6, 1974.

Found granite; appears to be leaning west; retied, September 22, 1998.

Retied granite monument, August 15, 2006.

Retied granite monument, October 21, 2011.