

MONUMENT 219

CERTIFICATE OF LOCATION OF GOVERNMENT CORNER

Southeast Corner of Section 21, Township 30 North, Range 22 West, County of Ramsey, State of Minnesota.

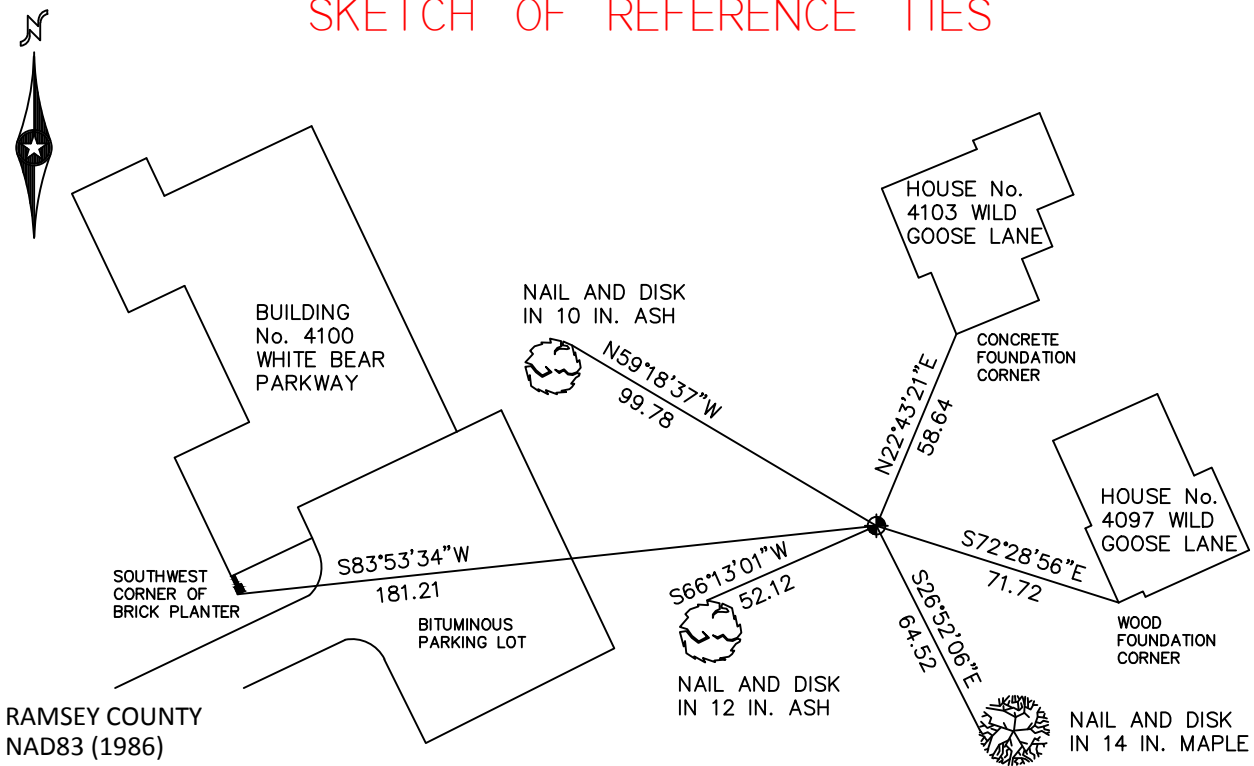
At the corner location shown on the sketch

On July 20, 2010 found a cast iron monument, down 0.2 feet.

left monument as found raised/lowered monument removed monument (explain)

On _____ placed a _____

SKETCH OF REFERENCE TIES



RAMSEY COUNTY
NAD83 (1986)

MONUMENT 219

X= 587183.093 (Easting)
Y= 199988.952 (Northing)

ALL DISTANCES ARE SHOWN IN U.S. SURVEY FEET.
BEARINGS ARE FOR TIE REFERENCE PURPOSES ONLY.

Statements of evidence relative to this corner are on the following page.

I hereby certify that this document has been prepared by me or under my direct supervision this _____ day of _____, 20____.

SIGNATURE

Minnesota License No. _____

- County Surveyor
 Deputy County Surveyor Land Surveyor

OFFICE OF COUNTY SURVEYOR
County of Ramsey

I hereby certify that this document was filed in the County Surveyor's office this _____ day of _____, 20____.

SIGNATURE

Craig W. Hinzman, L.S.
Ramsey County Surveyor

MONUMENT 219

Found a granite monument down 0.1 ft., tied, May 29, 1974.

Monument tied with long ties. Monument to be removed during grading, no date given in the field book.

Located position and set a 20 in. cast iron monument, May 15, 1992.

Tied monument, October 27, 1992.

Retied monument, October 1, 1999.

Retied monument, October 13, 2005.

Retied monument, July 20, 2010.