

MONUMENT 218

CERTIFICATE OF LOCATION OF GOVERNMENT CORNER

North Quarter Corner of Section 28, Township 30 North, Range 22 West, County of Ramsey, State of Minnesota.

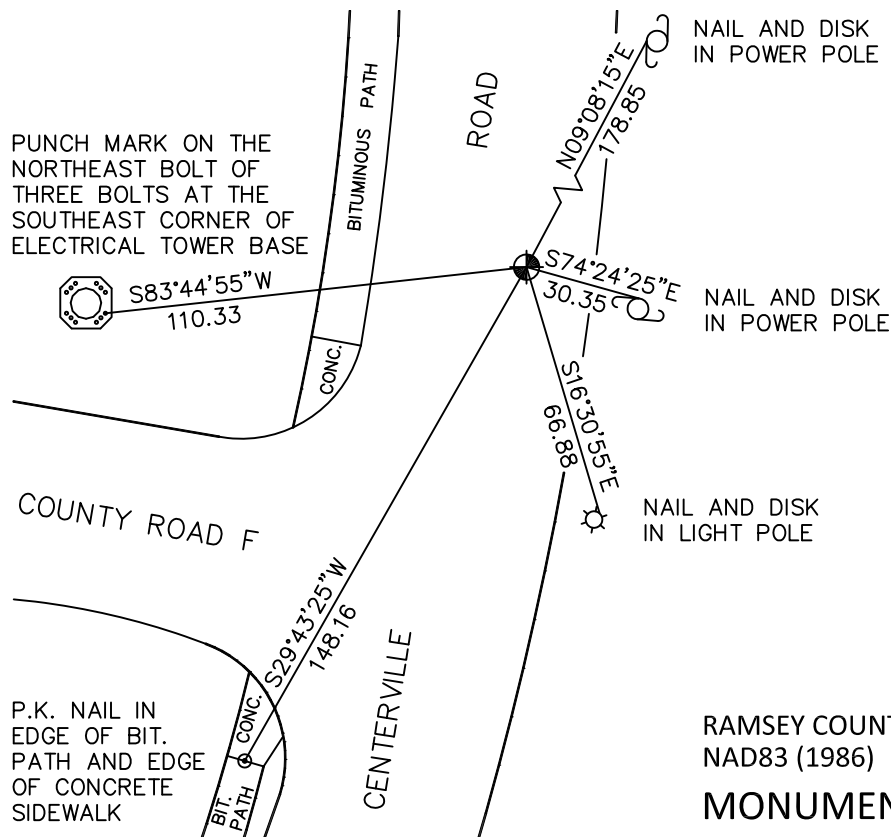
At the corner location shown on the sketch

On July 15, 2010 found a cast iron monument, within a cast iron manhole assembly.

left monument as found raised/lowered monument removed monument (explain)

On _____ placed a _____

SKETCH OF REFERENCE TIES



ALL DISTANCES ARE SHOWN IN U.S. SURVEY FEET.
BEARINGS ARE FOR TIE REFERENCE PURPOSES ONLY.

RAMSEY COUNTY
NAD83 (1986)

MONUMENT 218

X= 584540.921 (Easting)
Y= 199973.040 (Northing)

Statements of evidence relative to this corner are on the following page.

I hereby certify that this document has been prepared by me or under my direct supervision this _____ day of _____, 20____.

MINNESOTA LICENSE NO. _____ SIGNATURE

- County Surveyor
 Deputy County Surveyor Land Surveyor

OFFICE OF COUNTY SURVEYOR
County of Ramsey

I hereby certify that this document was filed in the County Surveyor's office this _____ day of _____, 20____.

SIGNATURE
Craig W. Hinzman, L.S.
Ramsey County Surveyor

MONUMENT 218

Found a granite monument down 0.1 ft. on center line of Centerville Road,
June 12, 1974.

Tied, June 24, 1974.

Removed cap for construction [sic], June 20, 1984.

Granite monument down only 1 in., June 26, 1987.

Tied monument, May 1, 1990.

Retied monument, June 25, 1998.

Tied monument for removal by construction project, December 4, 2001.

Reset monument location; set a 20 in. cast iron monument 18 in. down, contractor
set pipe and manhole assembly, August 22, 2002.

Tied monument, March 23, 2005.

Retied monument, July 15, 2010.