

MONUMENT 215

CERTIFICATE OF LOCATION OF GOVERNMENT CORNER

Northwest Corner of Section 29, Township 30 North, Range 22 West, County of Ramsey, State of Minnesota.

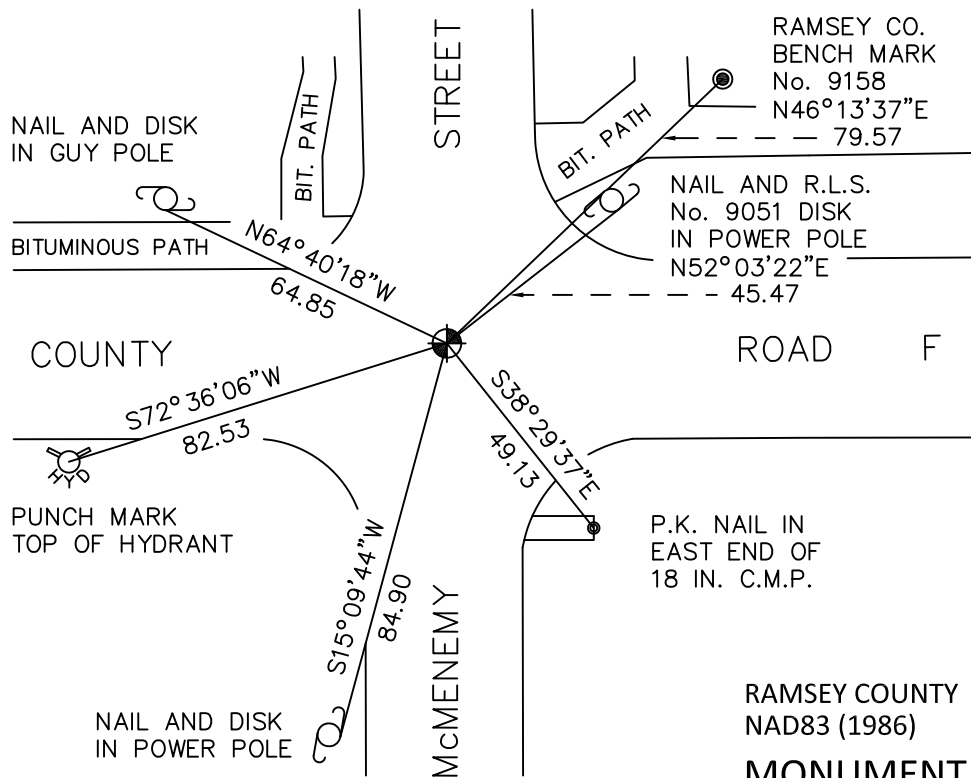
At the corner location shown on the sketch

On June 17, 2010 found a cast iron monument, flush.

left monument as found raised/lowered monument removed monument (explain)

On _____ placed a _____

SKETCH OF REFERENCE TIES



ALL DISTANCES ARE SHOWN IN U.S. SURVEY FEET.
BEARINGS ARE FOR TIE REFERENCE PURPOSES ONLY.

RAMSEY COUNTY
NAD83 (1986)
MONUMENT 215

X= 576642.436 (Easting)
Y= 199931.034 (Northing)

Statements of evidence relative to this corner are on the following page.

I hereby certify that this document has been prepared by me or under my direct supervision this _____ day of _____, 20____.

Minnesota License No. _____

- County Surveyor Deputy County Surveyor Land Surveyor

OFFICE OF COUNTY SURVEYOR
County of Ramsey

I hereby certify that this document was filed in the County Surveyor's office this _____ day of _____, 20____.

Michael D. Fiebiger, P.L.S.
Ramsey County Surveyor

MONUMENT 215

Found a cast iron monument, up 0.05 ft. and tied, August, 1974.

Removed a 20 in. cast iron monument, dug down +/-2.1 ft. to stone (did not appear to be granite) for Maintenance Department, July 12, 1989.

Placed a 20 in. cast iron monument in concrete, August 30, 1989.

Tied monument, May 1, 1990.

Retied monument, June 10, 1998.

Retied monument, June 11, 2001.

Retied monument, March 14, 2005.

Retied monument, June 17, 2010.