

MONUMENT 214

CERTIFICATE OF LOCATION OF GOVERNMENT CORNER

South Quarter Corner of Section 19, Township 30 North, Range 22 West, County of Ramsey, State of Minnesota.

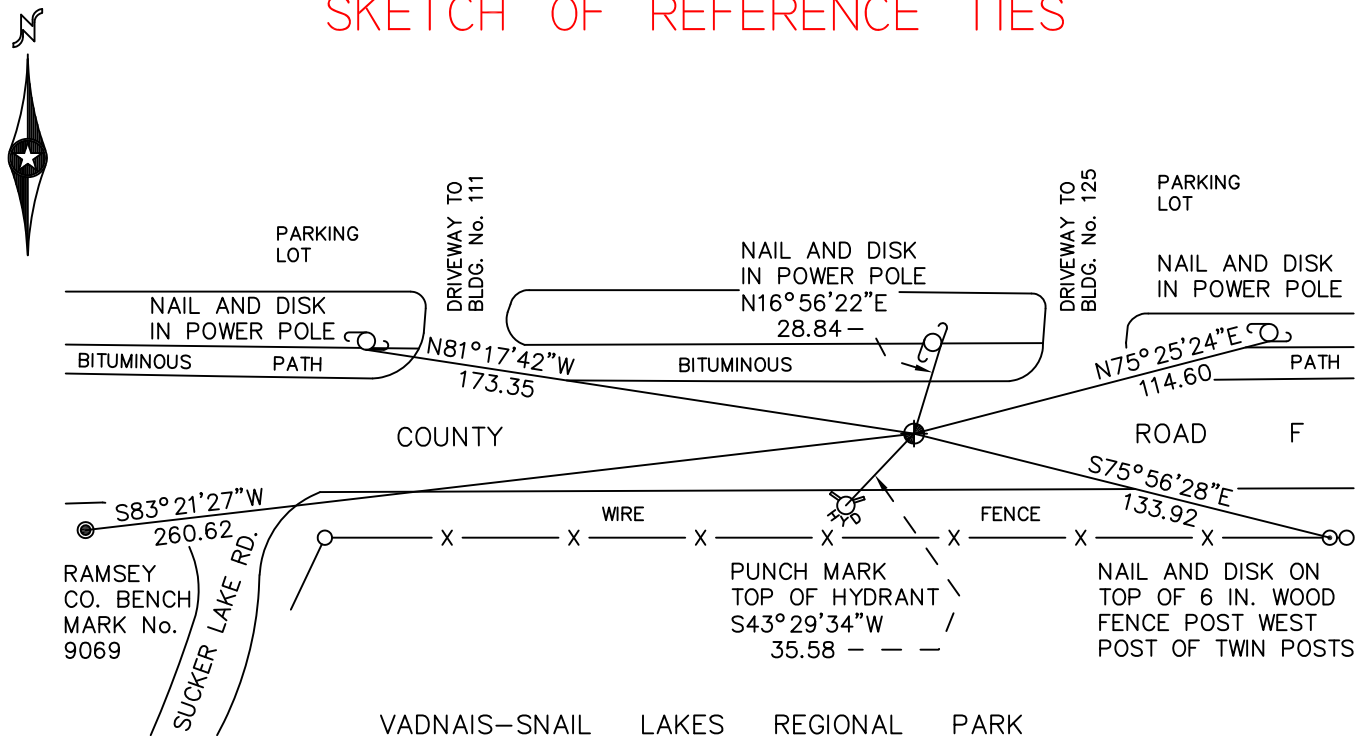
At the corner location shown on the sketch

On June 17, 2010 found a cast iron monument, flush.

left monument as found raised/lowered monument removed monument (explain)

On _____ placed a _____

SKETCH OF REFERENCE TIES



RAMSEY COUNTY
NAD83 (1986)

MONUMENT 214

X= 574006.664 (Easting)
Y= 199916.806 (Northing)

ALL DISTANCES ARE SHOWN IN U.S. SURVEY FEET.
BEARINGS ARE FOR TIE REFERENCE PURPOSES ONLY.

Statements of evidence relative to this corner are on the following page.

I hereby certify that this document has been prepared by me or under my direct supervision this _____ day of _____, 20____.

Minnesota License No. _____

- County Surveyor Deputy County Surveyor Land Surveyor

OFFICE OF COUNTY SURVEYOR
County of Ramsey

I hereby certify that this document was filed in the County Surveyor's office this _____ day of _____, 20____.

Michael D. Fiebiger, P.L.S.
Ramsey County Surveyor

MONUMENT 214

Found a railroad spike, down 0.1 ft., 1975.

Granite monument under spike; placed a short cast iron monument, +/-1976.

Tied monument, down 0.1 ft., August 3, 1981.

Removed the cast iron monument so that maintenance could grind up road, July 12, 1989.

Reset position using ties, August 29, 1989.

Dug through new asphalt and found the granite monument, down +/-0.8 ft.; set a 4 1/2 in. cast iron monument in concrete over the granite monument, August 30, 1989.

Tied monument, May 1, 1990.

Retied monument, June 10, 1998.

Retied monument, March 14, 2005.

Retied monument, June 17, 2010.