

MONUMENT 21

CERTIFICATE OF LOCATION OF GOVERNMENT CORNER

NOTE: TWO LOCATIONS FOR THIS CORNER HAVE BEEN PERPETUATED (SEE BELOW)
 Northeast Corner of Section 3, Township 30 North, Range 22 West, County of Ramsey, State of Minnesota.

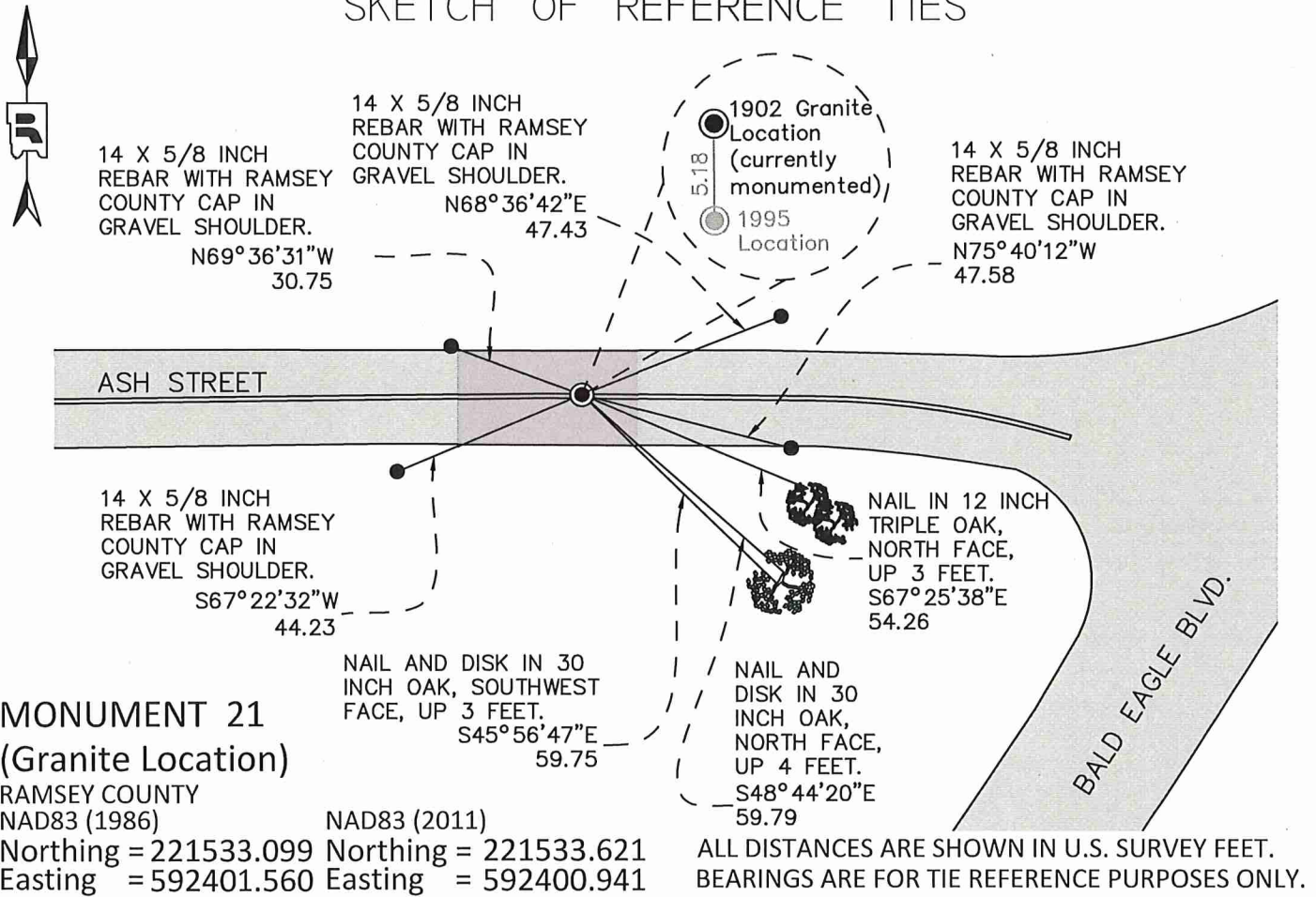
At the corner location shown on the sketch

On August 31, 2020 found cast iron monument, flush in bituminous road.

left monument as found raised/lowered monument removed monument (explain)

On _____ placed a _____

SKETCH OF REFERENCE TIES



Statements of evidence relative to this corner are on the following page.

I hereby certify that this survey, plan, or report was prepared by me or under my direct supervision, that I am a duly Licensed Land Surveyor under the laws of the state of Minnesota, and that this certificate is correct and complete to the best of my knowledge and belief.

Daniel D. Baar 8/24/21
 Daniel Baar Date
 Ramsey County Surveyor
 Minnesota License No. 45816

OFFICE OF COUNTY SURVEYOR
 County of Ramsey

I hereby certify that this document was filed in the County Surveyor's office this 24th day of August, 2021.

Daniel D. Baar
 Daniel D. Baar, L.S.
 Ramsey County Surveyor

MONUMENT 21

December 1, 1847	Northeast Corner of Section 3, Township 30N, Range 22W North between Sections 2 and 3, 86.29 chains, Intersect 3rd Correction Line 19.26 links west of corner of T31N, R21W and R22W. Set post corner to Sections 2 and 3. Tamarack 14 S4°W 1.10, Tamarack 16 S2°30'E 1.00. Isaac Higbee, Deputy Surveyor
January 30, 1902	In establishing the Northeast Corner of Section 3, found one Government witness stump and fixed Section Corner. Ramsey County Re-Monumentation Survey
December 13, 1902	Set monument. Ramsey County Re-Monumentation Survey
April, 1965	Found railroad spike over granite monument. Ramsey County Engineer's Office
May 6, 1974	Found granite monument down 0.1 feet at centerline of road. Ramsey County Surveyor's Office
October 21, 1974	Retied monument. Ramsey County Surveyor's Office
December 28, 1992	Found cast iron cap, flush. Retied. Ramsey County Surveyor's Office
July, 1996	Set 20 inch cast iron monument marked "3rd Correction Line" 5.18 feet South of closing corner (granite). Ramsey County Surveyor's Office
June 15, 1998	Checked ties for monument at "3rd Correction Line" position. Ramsey County Surveyor's Office
October 11, 2005	Retied monument at "3rd Correction Line" position. Ramsey County Surveyor's Office
July 12, 2010	Retied monument at "3rd Correction Line" position. Ramsey County Surveyor's Office
July 8, 2015	Found a cast iron monument at "3rd Correction Line" position. Checked local ties using certificate of location dated July 12, 2010. All ties present and in good condition except could not locate nail and disk in 12 inch Oak at N79-07-14E, 110.88 feet. Ramsey County Surveyor's Office
July 26, 2017	Found a granite monument, down +/- 24 inches. Set a 20 inch "Ramsey County" cast iron monument flush in bituminous roadway over granite monument. Retied and ran static GPS observation. Monument at "3rd Correction Line" position removed by others during road construction. Ramsey County Surveyor's Office
August 31, 2020	Checked cast iron monument at 1902 granite position and ties; all in and in good condition. Ramsey County Surveyor's Office