

MONUMENT 208

CERTIFICATE OF LOCATION OF FOUND MONUMENT

North Quarter Corner of Section 27, Township 30 North, Range 23 West, County of Ramsey, State of Minnesota.

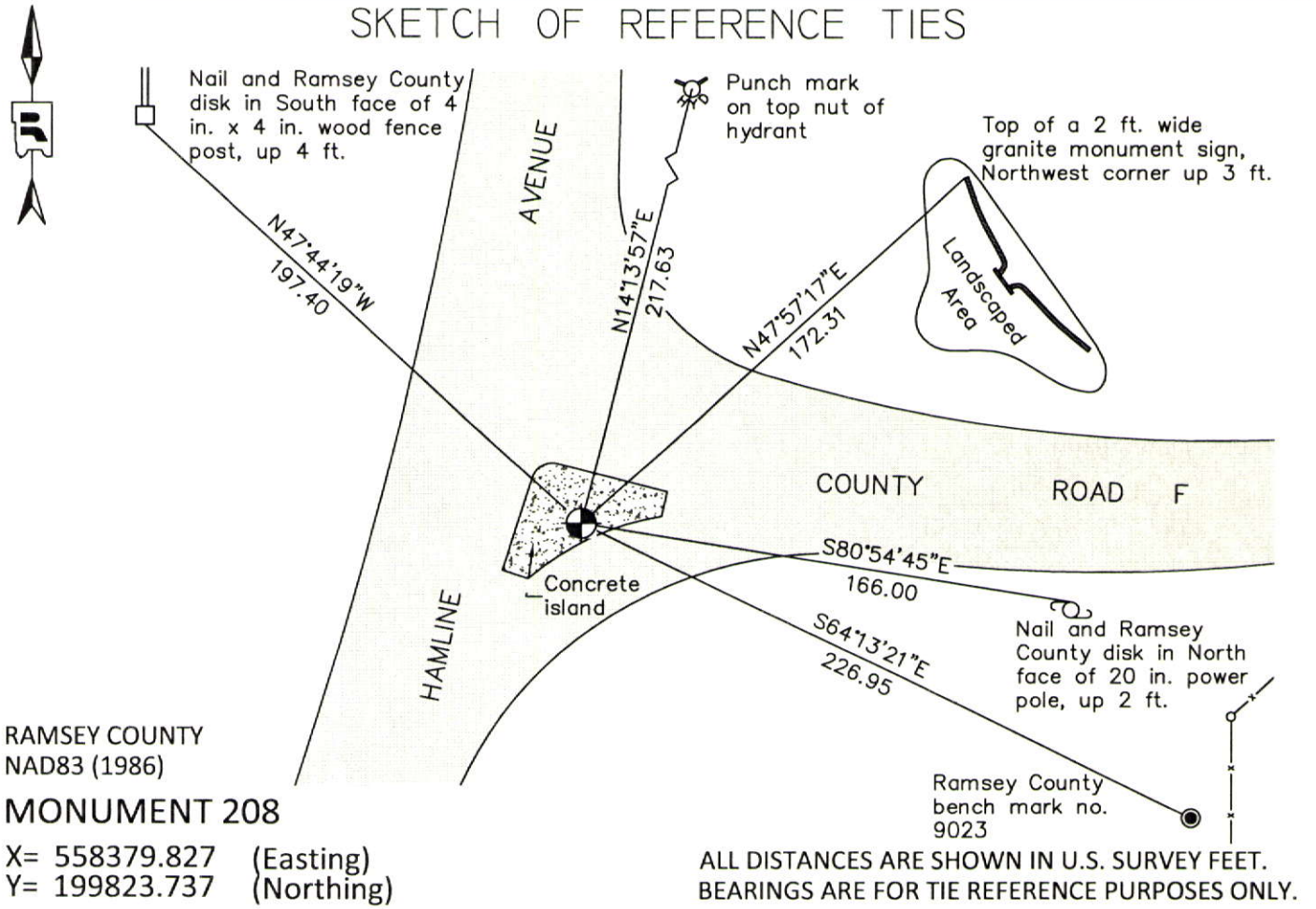
At the corner location shown on the sketch

On November 20, 2012 found a cast iron monument within a cast iron manhole assembly.

left monument as found raised/lowered monument removed monument (explain)

On _____ placed a _____

SKETCH OF REFERENCE TIES



RAMSEY COUNTY
NAD83 (1986)

MONUMENT 208

X= 558379.827 (Easting)
Y= 199823.737 (Northing)

ALL DISTANCES ARE SHOWN IN U.S. SURVEY FEET.
BEARINGS ARE FOR TIE REFERENCE PURPOSES ONLY.

Statements of evidence relative to this corner are on the following page.

I hereby certify that this document was prepared by me or under my direct supervision and that I am a duly Licensed Land Surveyor under the laws of the State of Minnesota.

Daniel D. Baar 12-15-14
Daniel D. Baar Date
Minnesota License No. 45816

County Surveyor Land Surveyor
 Deputy County Surveyor

OFFICE OF COUNTY SURVEYOR
County of Ramsey

I hereby certify that this document was filed in the County Surveyor's office this 15th day of December, 20 14.

Craig W. Hinzman
Craig W. Hinzman, L.S.
Ramsey County Surveyor

MONUMENT 208

North Quarter Corner of Section 27, Township 30 North, Range 23 West

Set 1/4 Section post, W. Oak 10 S38°W 60, "Do" (W. Oak) 13 S34°E 1.00, December 16, 1847.

In establishing the 1/4 Corner between 22 & 27, found one Government witness stump. Fixed Corner, tied it, and set monument, October, 1895.

Checked monument, December, 1943.

Checked monument, January, 1946.

Checked monument, June, 1961.

Found a cast iron monument, flush, May 31, 1974.

Tied monument, August 14, 1974.

Retied monument, February 1, 1991.

Retied monument, December 6, 2002.

Retied monument, March 14, 2005.

Retied monument, March 18, 2010.

Tied cast iron monument for removal during MNDOT road reconstruction, April 5, 2012.

Set a 20 in. "Ramsey County" cast iron monument flush with sub grade of curb island using construction ties. Manhole assembly to be installed over cast iron monument by others. Tied cast iron monument, October 22, 2012.

Found a "Ramsey County" cast iron monument within a cast iron manhole assembly set by others, November 20, 2012.