

MONUMENT 205

CERTIFICATE OF LOCATION OF FOUND MONUMENT

Northeast Corner of Section 29, Township 30 North, Range 23 West, County of Ramsey, State of Minnesota.

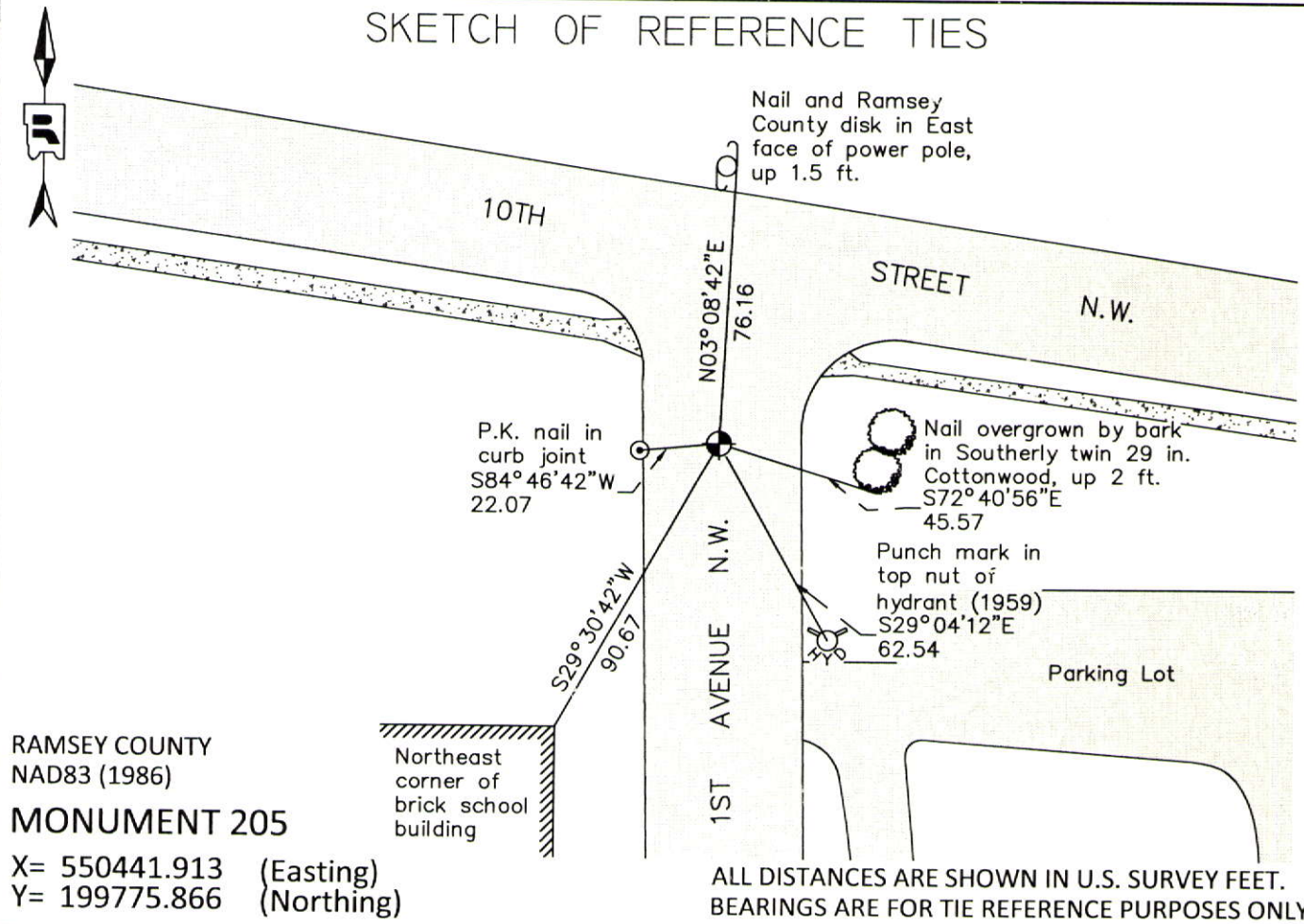
At the corner location shown on the sketch

On May 29, 2012 found a "Ramsey County" cast iron monument, down 18 in., within a cast iron manhole assembly.

left monument as found
 raised/lowered monument
 removed monument (explain)

On _____ placed a _____

SKETCH OF REFERENCE TIES



RAMSEY COUNTY
NAD83 (1986)
MONUMENT 205

X= 550441.913 (Easting)
Y= 199775.866 (Northing)

ALL DISTANCES ARE SHOWN IN U.S. SURVEY FEET.
BEARINGS ARE FOR TIE REFERENCE PURPOSES ONLY.

Statements of evidence relative to this corner are on the following page.

I hereby certify that this document was prepared by me or under my direct supervision and that I am a duly Licensed Land Surveyor under the laws of the State of Minnesota.

Daniel D. Baar 12-31-14
Daniel D. Baar Date
Minnesota License No. 45816

County Surveyor Land Surveyor
 Deputy County Surveyor

OFFICE OF COUNTY SURVEYOR
County of Ramsey

I hereby certify that this document was filed in the County Surveyor's office this 31st day of December, 20 14.

Craig W. Hinzman
Craig W. Hinzman, L.S.
Ramsey County Surveyor

MONUMENT 205

Northeast Corner of Section 29, Township 30 North, Range 23 West

Set post Corner to Sections 20, 21, 28, & 29, Bur Oak 12 S67°E 2.85, "Do" (Bur Oak) 10 S30°W 183, December 16th, 1847.

In establishing the Southwest Corner of Section 21, found old stake at Section Corner, Government Witness trees gone. Fixed Corner and set monument, December, 1895.

Checked monument, October, 1933.

Checked monument, December, 1943.

Checked monument, May, 1954.

S.P. 6284-23 T.H. 35W Jim Chandler and crew found an iron pin 0.5 ft. below bituminous surface, April 1, 1963. (Minnesota Highway Department)

Checked monument, June, 1964.

After construction and a fill over this corner, we reset a 3/4 in. iron pin above, flush with new bituminous and took new ties, November 28, 1964. (Minnesota Highway Department)

Found iron flush, February, 1976.

New Brighton reconstruction, 1987.

Dug for iron, found 1/2 in. by 14 in. iron, down 5.5 ft. in old road pavement; used post hole digger and went down 2 ft. deeper, did not find granite monument; set a 20 in. cast iron monument, 1989.

Tied cast iron monument, June 18, 1991.

Set monument down 18 in. and set manhole assembly over top, no date given in field book.

Tied monument, November 21, 2002.

Retied monument, July 30, 2007.

Checked condition of cast iron monument within a cast iron man hole assembly, and ties, May 29, 2012.