

# MONUMENT 201

## CERTIFICATE OF LOCATION OF GOVERNMENT CORNER

Northwest Corner of Section 30, Township 30 North, Range 23 West, County of Ramsey, State of Minnesota.

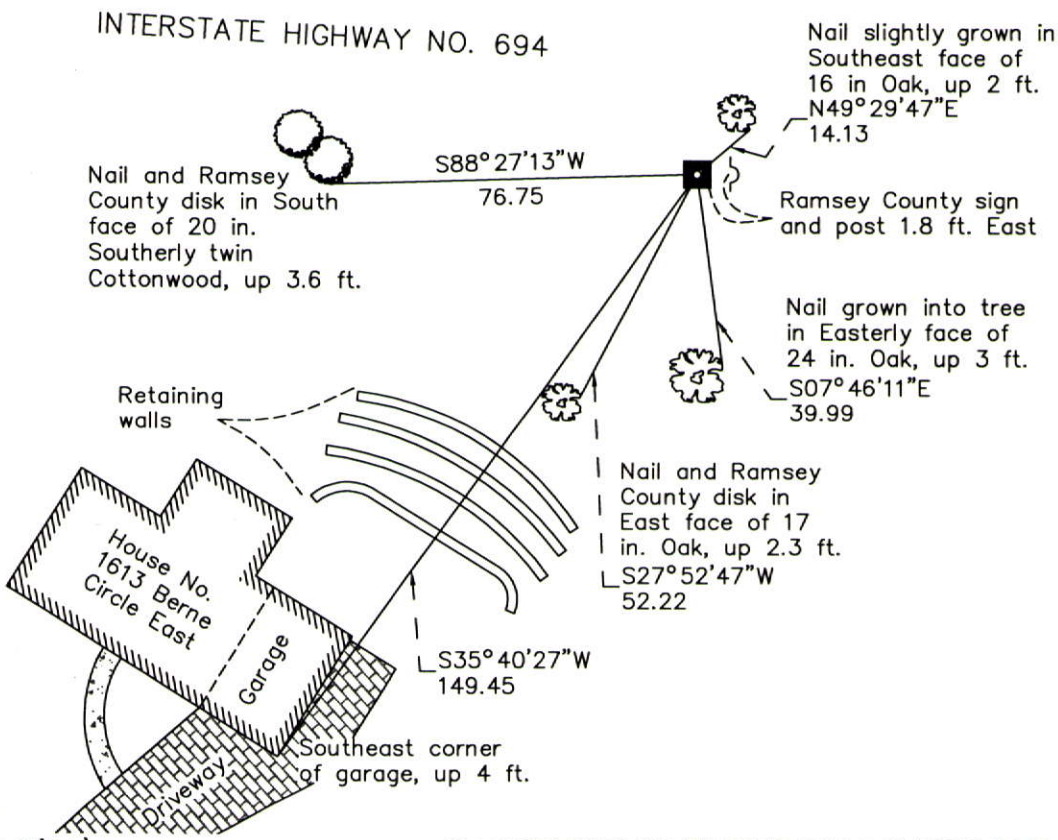
At the corner location shown on the sketch

On June 4, 2012 found a 8 in. by 8 in. granite monument, up +/-0.3 ft.

left monument as found       raised/lowered monument       removed monument (explain)

On \_\_\_\_\_ placed a \_\_\_\_\_

### SKETCH OF REFERENCE TIES



RAMSEY COUNTY  
NAD83 (1986)

### MONUMENT 201

X= 540341.805 (Easting)  
Y= 199651.215 (Northing)

ALL DISTANCES ARE SHOWN IN U.S. SURVEY FEET.  
BEARINGS ARE FOR TIE REFERENCE PURPOSES ONLY.

Statements of evidence relative to this corner are on the following page.

I hereby certify that this document was prepared by me or under my direct supervision and that I am a duly Licensed Land Surveyor under the laws of the State of Minnesota.

Daniel D. Baar      12-30-14  
Daniel D. Baar      Date

Minnesota License No. 45816

- County Surveyor       Land Surveyor  
 Deputy County Surveyor

OFFICE OF COUNTY SURVEYOR  
County of Ramsey

I hereby certify that this document was filed in the County Surveyor's office this 30th day of December, 20 14.

Craig W. Hinzman  
Craig W. Hinzman, L.S.  
Ramsey County Surveyor

# MONUMENT 201

Northwest Corner of Section 30, Township 30 North, Range 23 West

Set post at Corner to Sections 19, 24, 25, and 30, Wht Oak 18 N25°E 38, Wht Oak 16 N55°W 207, October 18, 1847.

In establishing the Southwest Corner of Section 19, found two Government witness tree stumps. Fixed Corner and tied it, June 26, 1901.

Set monument, August 10, 1901.

Checked monument, November, 1943.

Checked monument, December, 1946.

The described corner was evidenced by an 8 in. by 8 in. granite monument, July 8, 1960. (Anoka County Surveyor)

Found a granite monument flush and tied, October 25, 1974.

Retied monument, up +/-0.3 ft. and set sign and post +/-2 ft. East, January 7, 1992.

Retied granite monument, up +/-0.3 ft., November 13, 2002.

Retied granite monument, up +/-0.3 ft., October 3, 2007.

Found and the ties were updated, October 9, 2008. (Anoka County Surveyor)

Checked granite monument condition and ties, granite up +/-0.3 ft., June 4, 2012.