

MONUMENT 2

CERTIFICATE OF LOCATION OF FOUND MONUMENT

North Quarter Corner of Section 6, Township 30 North, Range 23 West, County of Ramsey, State of Minnesota.

At the corner location shown on the sketch

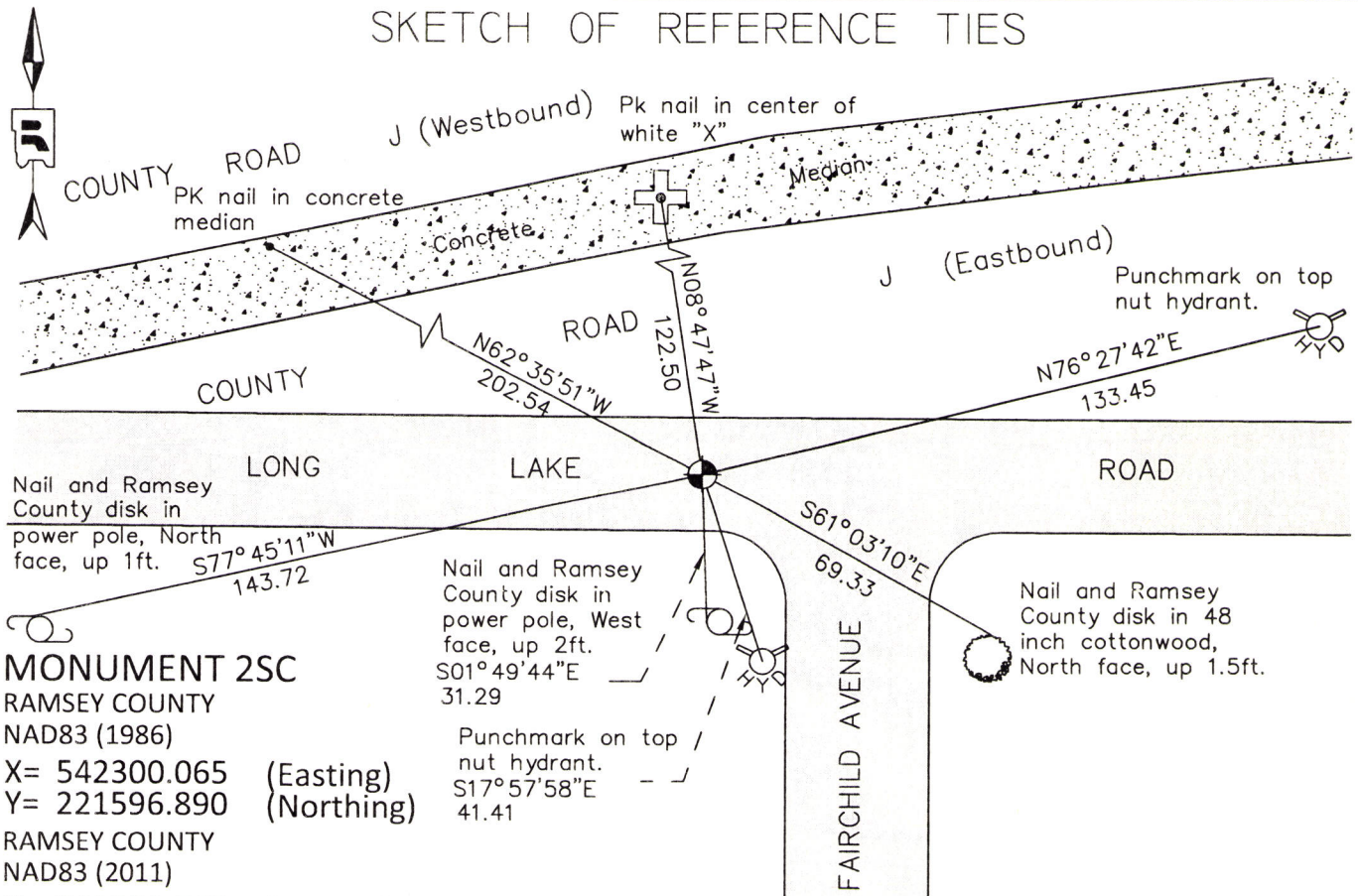
On September 2, 2009 found a cast iron monument, marked "3RD CORRECTION LINE", flush.

Monument obliterated during road construction in summer 2015.

left monument as found raised/lowered monument removed monument (explain)

On October 26, 2015 placed a cast iron monument, marked "Ramsey County", flush.

SKETCH OF REFERENCE TIES



MONUMENT 2SC
 RAMSEY COUNTY
 NAD83 (1986)
 X= 542300.065 (Easting)
 Y= 221596.890 (Northing)
 RAMSEY COUNTY
 NAD83 (2011)
 X= 542299.568 (Easting)
 Y= 221597.812 (Northing)

ALL DISTANCES ARE SHOWN IN U.S. SURVEY FEET.
 BEARINGS ARE FOR TIE REFERENCE PURPOSES ONLY.

Statements of evidence relative to this corner are on the following page.

I hereby certify that this survey, plan, or report was prepared by me or under my direct supervision, that I am a duly Licensed Land Surveyor under the laws of the state of Minnesota, and that this certificate is correct and complete to the best of my knowledge and belief.

Daniel D. Baar
 Daniel D. Baar
 Deputy County Surveyor
 Minnesota License No. 45816

6-10-16
 Date

OFFICE OF COUNTY SURVEYOR
 County of Ramsey

I hereby certify that this document was filed in the County Surveyor's office this 10th day of June, 20 16.

Craig W. Hinzman
 Craig W. Hinzman, L.S.
 Ramsey County Surveyor

MONUMENT 2

North Quarter Corner of Section 6, Township 30 North, Range 23 West

June 22, 1903	In establishing the Quarter Corner on the North of Section 6 ran straight line East and West. Fixed Quarter Corner Government distance from Northwest Corner of Section 6 and set monument. Ramsey County Re-monumentation
Undated note	Green Book Section 6, T30N, R23W states that the monument is an iron in concrete. There is no note as to what happened to the original monument from 1903. Ramsey County Engineering Office
1938	AUDITOR'S SUBDIVISION NO. 89 shows a stone monument.
November, 1950	Monument checked. Ramsey County Engineering Office
March, 1951	Monument checked. Ramsey County Engineering Office
February, 1954	Monument checked. Ramsey County Engineering Office
October 28, 1964	The described corner was evidenced by a 3/4 inch axle shaft. Anoka County Surveyor's Office
March, 1968	Monument checked. Ramsey County Engineering Office
May 3, 1975	Found iron in concrete. Found cast iron down 0.18ft. Ramsey County Surveyor's Office
June 26, 1975	Tied out monument. Ramsey County Surveyor's Office
1978	Plat of CEDAR BAY ESTATES shows a Cast Iron Monument.
May 3, 1990	Retied corner. Ramsey County Surveyor's Office
Unknown date, 1991	Monument may be destroyed by construction. Ramsey County Surveyor's Office
October 10, 1993	Monument located under 0.2ft of bituminous material. Short ties (less than 100ft.) checked. Ramsey County Surveyor's Office
July 28, 1995	Removed existing monument and set a 20 inch cast iron monument marked "3RD CORRECTION LINE" in concrete, 0.03 feet south of monumented position at a calculated position on the Third Correction Line. The Correction Line position was calculated by intersecting a line connecting the Southwest Corner of Section 32, Township 31, Range 23, and the South Quarter Corner of said Section 32 with a line from the Center of Section 6, Township 30, Range 23, and the existing monument marking the Quarter Corner of said Section 6. Ramsey County Surveyor's Office
June 20, 1996	Tied Correction Line monument. Ramsey County Surveyor's Office
June 4, 2004	Tied Correction Line monument. Ramsey County Surveyor's Office
September 2, 2009	Retied Correction Line monument. Ramsey County Surveyor's Office
April 22, 2014	Found a cast iron monument, flush with road. Checked local ties using Certificate of Location dated September 2, 2009. All ties present and in good condition. Ramsey County Surveyor's Office
July 1, 2014	Tied monument. Anoka County Surveyor's Office
June 17, 2015	Visited monument to perform Static observation. Monument obliterated by city road construction. Ramsey County Surveyor's Office
October 26, 2015	Set 20 inch cast iron monument marked "Ramsey County", flush with road surface. Monument position reestablished by using local ties and historical traverse data. Ramsey County Surveyor's Office