

# MONUMENT 19E

## CERTIFICATE OF LOCATION OF GOVERNMENT CORNER

Meander Corner No. 17 of Section 3, Township 30 North, Range 22 West, County of Ramsey, State of Minnesota.

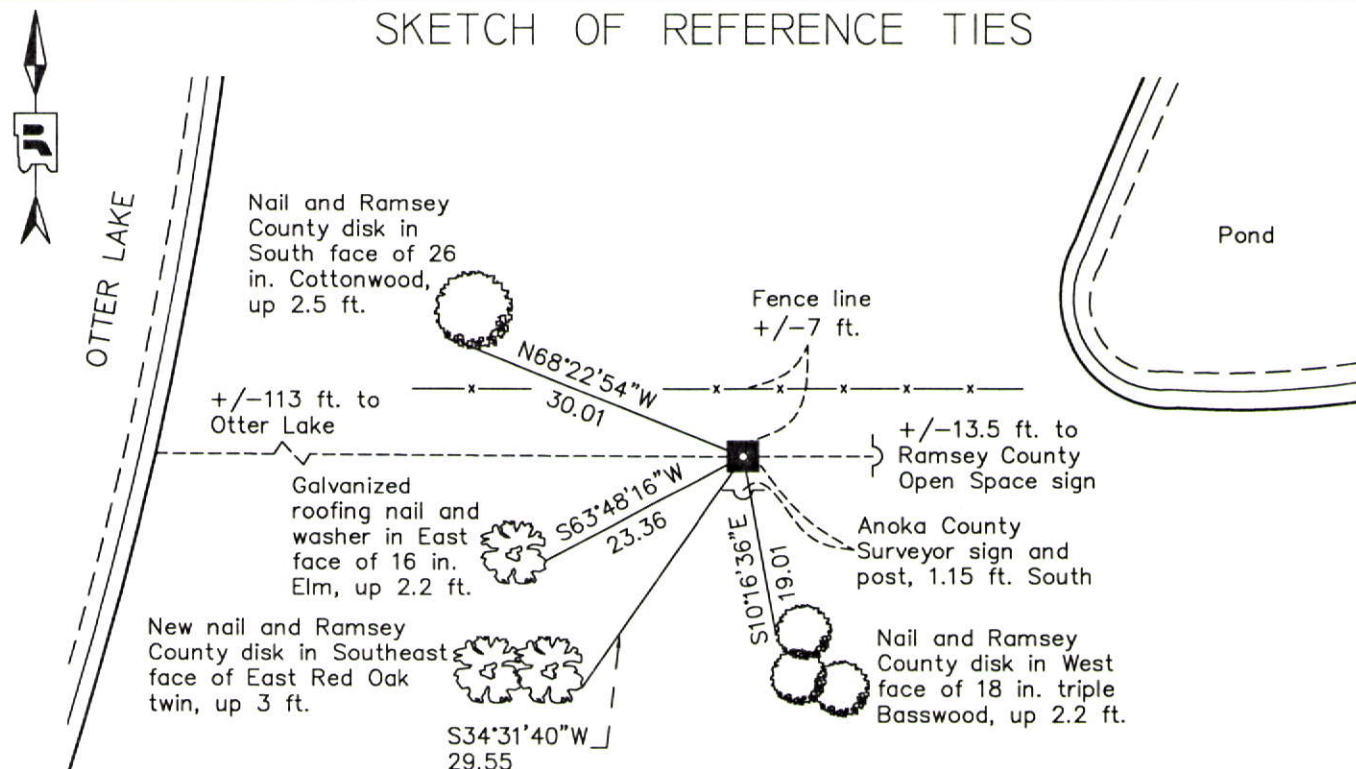
At the corner location shown on the sketch

On October 10, 2012 found a 6 in. by 8 in. granite monument with drill hole, down 0.4 ft.

left monument as found       raised/lowered monument       removed monument (explain)

On \_\_\_\_\_ placed a \_\_\_\_\_

### SKETCH OF REFERENCE TIES



RAMSEY COUNTY  
NAD83 (1986)

### MONUMENT 19E

X= 589657.078 (Easting)  
Y= 221526.862 (Northing)

ALL DISTANCES ARE SHOWN IN U.S. SURVEY FEET.  
BEARINGS ARE FOR TIE REFERENCE PURPOSES ONLY.

Statements of evidence relative to this corner are on the following page.

I hereby certify that this document was prepared by me or under my direct supervision and that I am a duly Licensed Land Surveyor under the laws of the State of Minnesota.

Daniel D. Baar      12-30-14  
Daniel D. Baar      Date

Minnesota License No. 45816

- County Surveyor       Land Surveyor  
 Deputy County Surveyor

OFFICE OF COUNTY SURVEYOR  
County of Ramsey

I hereby certify that this document was filed in the County Surveyor's office this 30th day of December, 20 14.

Craig W. Hinzman  
Craig W. Hinzman, L.S.  
Ramsey County Surveyor

# MONUMENT 19E

Meander Corner No. 17 of Section 3, Township 30 North, Range 22 West

Birch 8 for Meander Corner, Tamarack 8 S45°E 48, Birch 17 N15°E 26,  
August 16, 1847.

In establishing Meander Corner No. 17, found two Government witness stumps and  
fixed Meander Corner No. 17, February 12, 1902.

Set monument, December 19, 1902.

The described corner was evidenced by a granite monument and tied, July 8, 1963.  
(Anoka County Surveyor)

Lowered granite, April, 1965.

Found granite monument, down 0.2 ft., tied and rolled a yellow painted boulder over  
next to fence, May 10, 1974.

Granite monument down +/-0.4 ft.; sign and post 1.0 ft. South of monument;  
retied monument, December 28, 1992.

Retied monument, June 15, 1998.

Retied monument, October 11, 2005.

Found granite down +/-0.1 ft. and ties were updated, July 19, 2010. (Anoka County  
Surveyor)

Found a 6 in. by 8 in. granite monument, down 0.4 ft. with an Anoka County  
Surveyor sign and post 1.15 ft. South of monument; tied, October 10, 2012.