

MONUMENT 188

CERTIFICATE OF LOCATION OF GOVERNMENT CORNER

East Quarter Corner of Section 24, Township 30 North, Range 23 West, County of Ramsey, State of Minnesota.

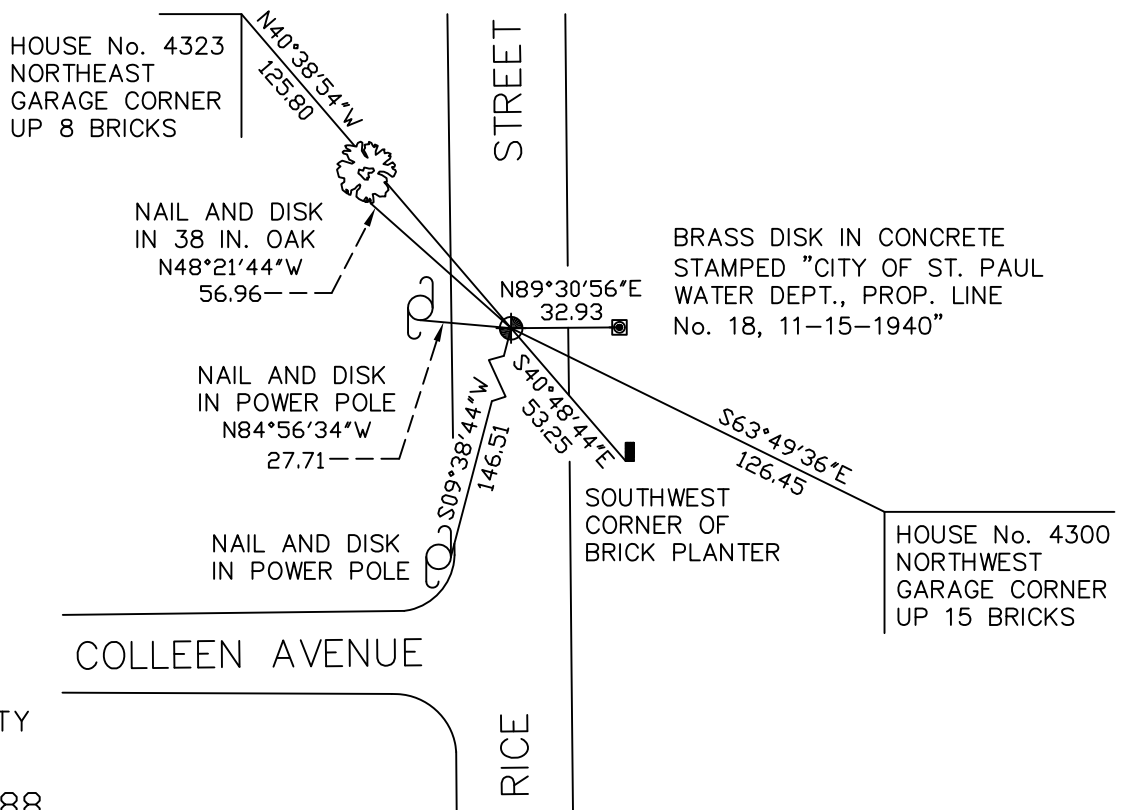
At the corner location shown on the sketch

On September 17, 2008 found a cast iron monument, flush.

left monument as found lowered monument removed monument (explain)

On _____ placed a _____

SKETCH OF REFERENCE TIES



RAMSEY COUNTY
NAD83 (1986)
MONUMENT 188

X= 571538.429 (Easting)
Y= 202516.477 (Northing)

ALL DISTANCES ARE SHOWN IN U.S. SURVEY FEET.
BEARINGS ARE FOR TIE REFERENCE PURPOSES ONLY.

Statements of evidence relative to this corner are on the following page(s).

I hereby certify that this document and the data contained herein was prepared by me or under my direct supervision this _____ day of _____, 20____.

SIGNATURE

Minnesota License No. _____

- County Surveyor
 Deputy County Surveyor Land Surveyor

OFFICE OF COUNTY SURVEYOR

County of Ramsey

I hereby certify that this document was filed in the County Surveyor's office on the ____ day of _____, 20____.

David D. Claypool, P.L.S., County Surveyor

By _____, Deputy

MONUMENT 188

Found a 2 inch solid iron and retied, August 21, 1974.

Set a 20 inch cast iron monument, 1976.

Retied cast iron monument, flush, January 21, 1992.

Removed monument for Maintenance Department, July 10, 1992.

Set a 20 inch cast iron monument; 8 inches down a ridge of concrete on south edge of hole, don't use auger, November 10, 1992.

Retied monument, found flush, August 6, 2003.

Retied cast iron monument, found flush, September 17, 2008.