

MONUMENT 185E

CERTIFICATE OF LOCATION OF GOVERNMENT CORNER

Witness Corner West of the East Quarter Corner of Section 23, Township 30 North, Range 23 West, County of Ramsey, State of Minnesota.

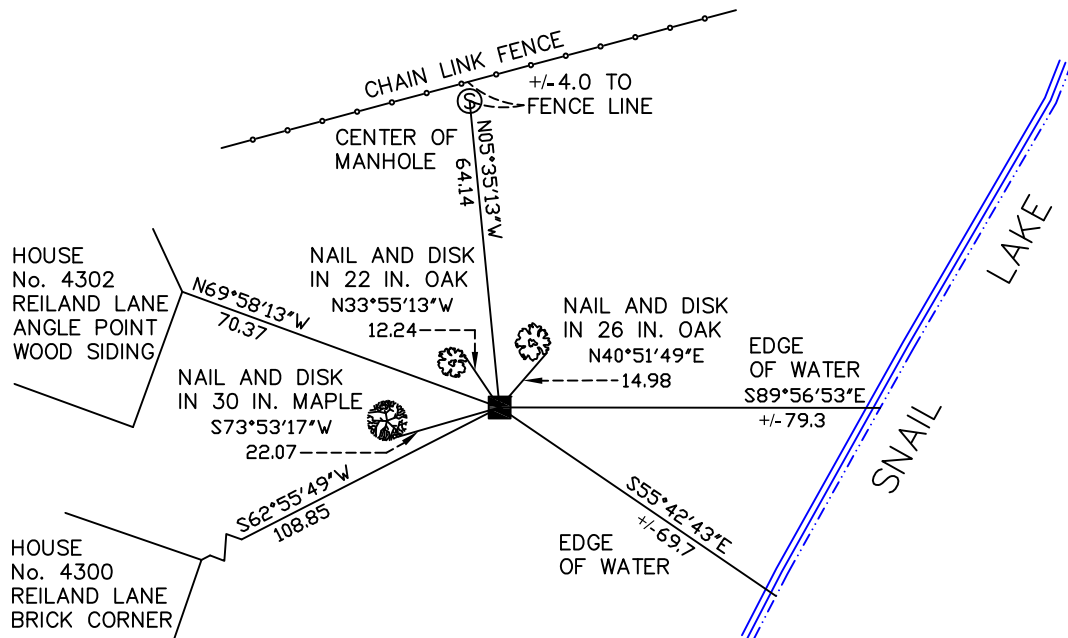
At the corner location shown on the sketch

On April 18, 2008 found a granite monument, down 0.4 feet.

left monument as found lowered monument removed monument (explain)

On _____ placed a _____

SKETCH OF REFERENCE TIES



RAMSEY COUNTY
NAD83 (1986)

MONUMENT 185E

X= 566074.751 (Easting)
Y= 202526.855 (Northing)

ALL DISTANCES ARE SHOWN IN U.S. SURVEY FEET.
BEARINGS ARE FOR TIE REFERENCE PURPOSES ONLY.

Statements of evidence relative to this corner are on the following page(s).

I hereby certify that this document and the data contained herein was prepared by me or under my direct supervision this _____ day of _____, 20____.

SIGNATURE

Minnesota License No. _____

- County Surveyor
 Deputy County Surveyor Land Surveyor

OFFICE OF COUNTY SURVEYOR

County of Ramsey

I hereby certify that this document was filed in the County Surveyor's office on the ____ day of _____, 20____.

David D. Claypool, P.L.S., County Surveyor

By _____, Deputy

MONUMENT 185E

Found a granite monument down 0.4 ft. and retied, November 20, 1979.

Retied granite monument, down 0.4 ft.; railroad spike on south side of monument, October 1, 1993.

Retied monument, down 0.3 ft., November 25, 2002.

Retied monument, down 0.4 ft., April 18, 2008.