

MONUMENT 180

CERTIFICATE OF LOCATION OF GOVERNMENT CORNER

West Quarter Corner of Section 21, Township 30 North, Range 23 West, County of Ramsey, State of Minnesota.

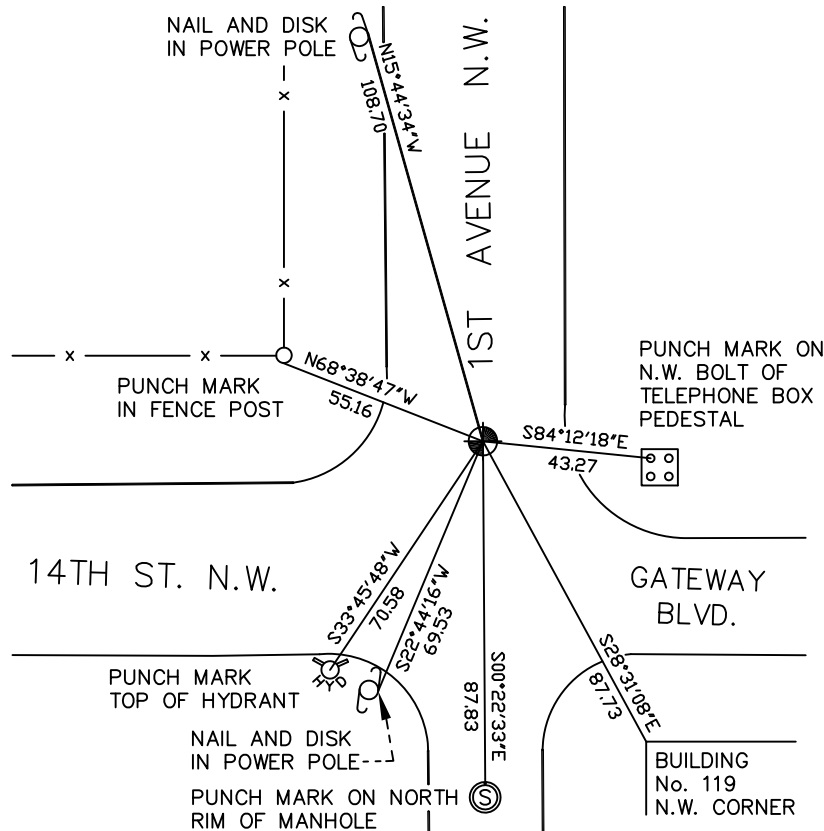
At the corner location shown on the sketch

On October 31, 2008 found a cast iron monument within a cast iron manhole assembly.

left monument as found lowered monument removed monument (explain)

On _____ placed a _____

SKETCH OF REFERENCE TIES



RAMSEY COUNTY
NAD83 (1986)

MONUMENT 180

X= 550419.596 (Easting)
Y= 202413.601 (Northing)

ALL DISTANCES ARE SHOWN IN U.S. SURVEY FEET.
BEARINGS ARE FOR TIE REFERENCE PURPOSES ONLY.

Statements of evidence relative to this corner are on the following page(s).

I hereby certify that this document and the data contained herein was prepared by me or under my direct supervision this _____ day of _____, 20____.

SIGNATURE

Minnesota License No. _____

- County Surveyor
 Deputy County Surveyor Land Surveyor

OFFICE OF COUNTY SURVEYOR

County of Ramsey

I hereby certify that this document was filed in the County Surveyor's office on the ____ day of _____, 20____.

David D. Claypool, P.L.S., County Surveyor

By _____, Deputy

MONUMENT 180

Found a cast iron monument flush and retied, February 13, 1976.

Retied monument, January 22, 1992.

Retied monument, down 3 inches, June 10, 1998.

Retied monument, March 15, 2005.

Tied out monument for removal during road reconstruction, April 14, 2008.

Set a P.K. nail at corner location, June 10, 2008.

Set a 20 inch cast iron monument within a cast iron manhole assembly, June 12, 2008.

Tied monument, October 31, 2008.