

MONUMENT 176

CERTIFICATE OF LOCATION OF GOVERNMENT CORNER

West Quarter Corner of Section 19, Township 30 North, Range 23 West, County of Ramsey, State of Minnesota.

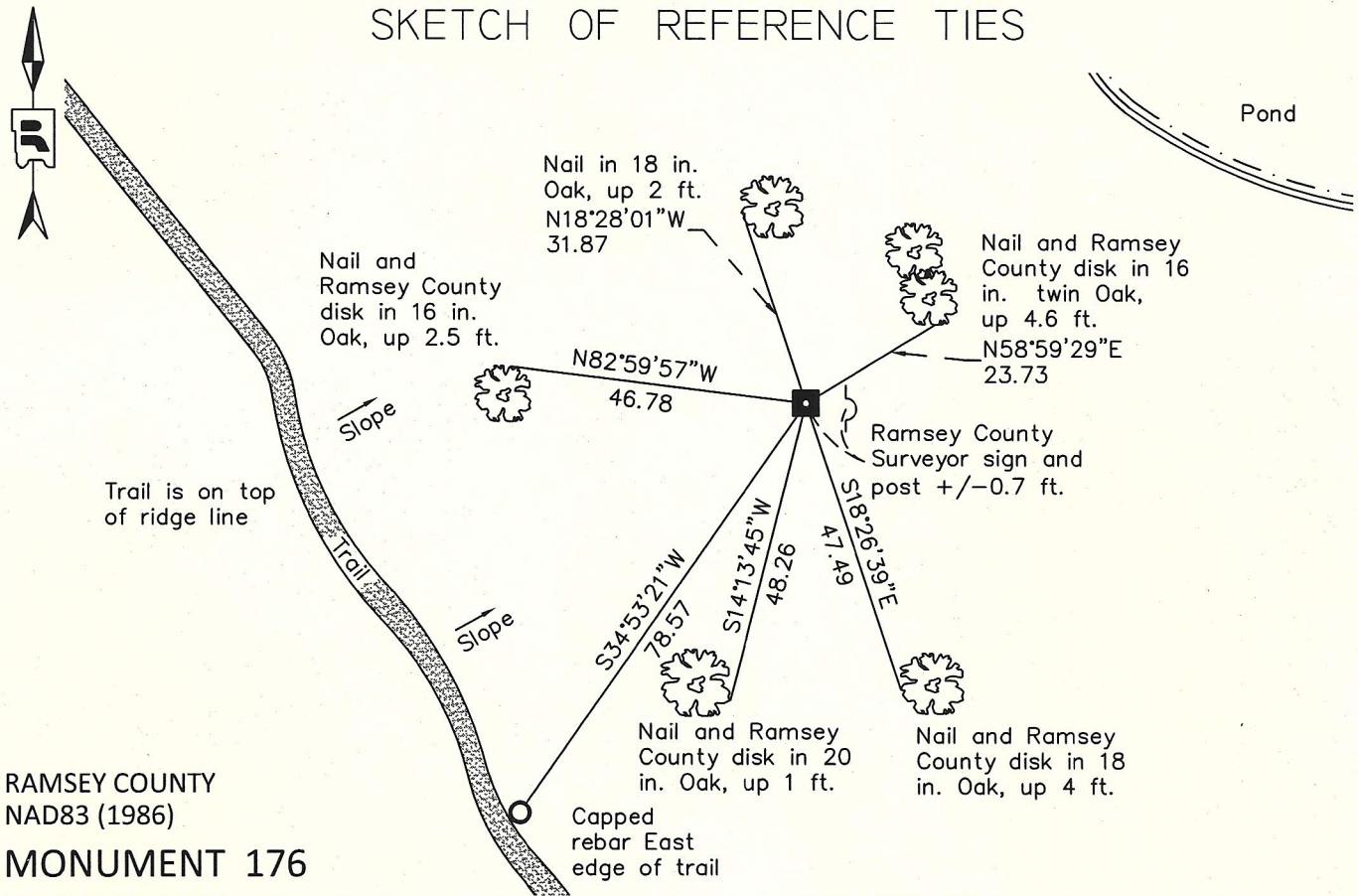
At the corner location shown on the sketch

On September 30, 2011 found an 8 in. x 8 in. granite monument with drill hole, flush.

left monument as found raised/lowered monument removed monument (explain)

On _____ placed a _____

SKETCH OF REFERENCE TIES



I hereby certify that this document was prepared by me or under my direct supervision and that I am a duly Licensed Land Surveyor under the laws of the State of Minnesota.

Daniel D. Baar 8-15-12
Daniel D. Baar Date
Minnesota License No. 45816

- County Surveyor
 Deputy County Surveyor Land Surveyor

OFFICE OF COUNTY SURVEYOR
County of Ramsey

I hereby certify that this document was filed in the County Surveyor's office this 15th day of August, 20 12.

Craig W. Hinzman
Craig W. Hinzman, L.S.
Ramsey County Surveyor

MONUMENT 176

West Quarter Corner of Section 19, Township 30 North, Range 23 West

Set post at qr. Section Corner, Wht. Oak 14 S60°W 44, B. Oak 12 N10°E 158,
October 18, 1847.

In establishing the 1/4 Corner on the W. of Section 19, ran straight line from Section
Corner to Section Corner and established the 1/4 Corner, no Government Witness
trees, June 27, 1901.

Set Monument, June 30, 1901.

Ok, December 2, 1946.

Found granite monument flush and tied, October 25, 1974.

Found granite on steep slope to the East with post to the West +/-1.0 ft.,
April 3, 2001.

Retied monument and placed sign and post 3/4 ft. East of monument, June 3, 2005.

Retied an 8 in. x 8 in. granite monument with drill hole, flush, September 30, 2011.