

MONUMENT 173N

CERTIFICATE OF LOCATION OF GOVERNMENT CORNER

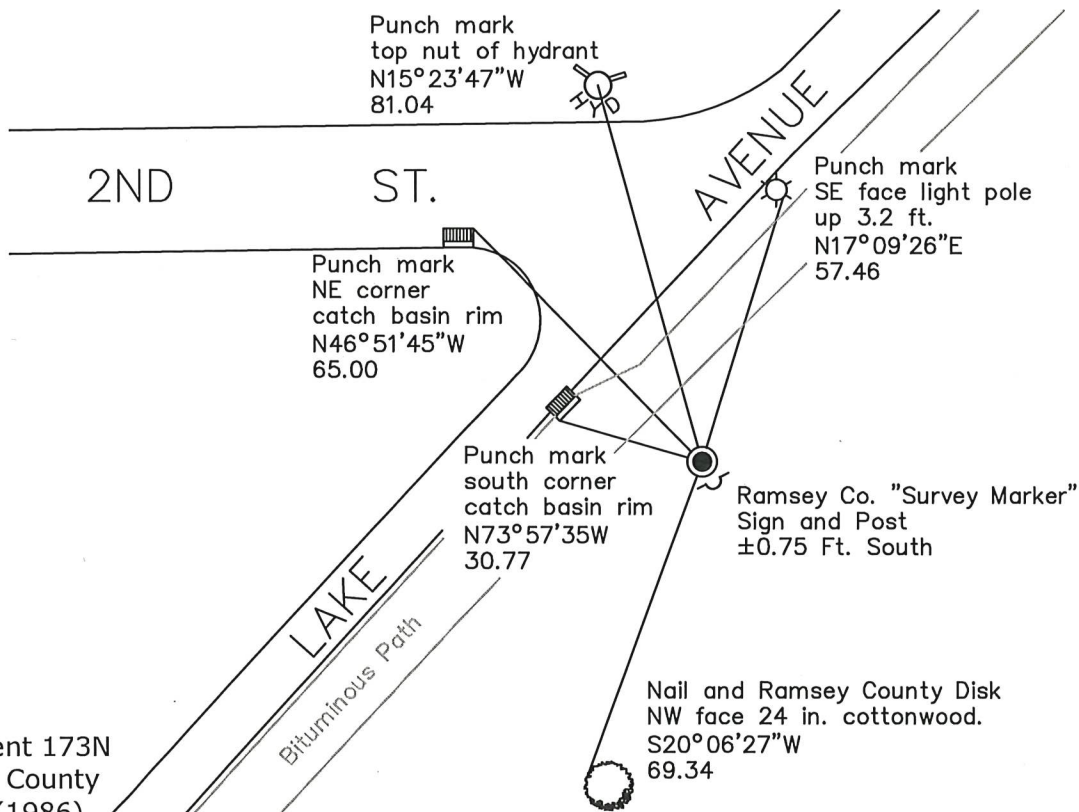
M.C. No. 3, Section 14, Township 30 North, Range 22 West, County of Ramsey, State of Minnesota.

At the corner location shown on the sketch

On July 30, 2020 found a cast iron monument, flush in grass.

On _____ placed a _____

SKETCH OF REFERENCE TIES



Monument 173N
 Ramsey County
 NAD83 (1986)
 Northing = 206719.46
 Easting = 597681.88

All distances are shown in U.S. Survey Feet.
 Bearings are for tie reference purposes only.

Statements of evidence relative to this corner are on the following page.

I hereby certify that this survey, plan, or report was prepared by me or under my direct supervision, that I am a duly Licensed Land Surveyor under the laws of the state of Minnesota, and that this certificate is correct and complete to the best of my knowledge and belief.

Devin R. Ball 4/14/22
 Devin R. Ball Date
 Deputy County Surveyor
 Minnesota License No. 56023

OFFICE OF COUNTY SURVEYOR
 County of Ramsey

I hereby certify that this document was filed in the County Surveyor's office this 19th day of April, 20 22.

Daniel D. Baar
 Daniel D. Baar
 Ramsey County Surveyor
 Minnesota License No. 45816

MONUMENT 173N

M.C. No. 3, Section 14, Township 30, Range 22

December 1, 1847	South between Sections 13 and 14. 58.00 chains to White Bear Lake and set Meander Post. Bur Oak 12N 34W 60 links Bur Oak 10N 14E 79 links Isaac N. Higbee, Deputy Surveyor
November 30, 1901	In establishing Meander Corner No. 3. Produced the line straight South from the two Government Corners and fixed Meander Corner. No Gov. witness trees. Set Mon. Ramsey County Resurvey
March 17, 1933	Re-established using angle and record distance, 1191.34 ft. from the East Quarter Corner. Ramsey County Engineer
April 22, 1940	Re-set using angle and stump. Ramsey County Engineer
April 3, 1984	Found a granite monument down 21 inches; placed a cast iron monument over and retied. Ramsey County Surveyor's Office
September 29, 1999	Retied. Ramsey County Surveyor's Office
October 25, 1999	Set a sign and post 8 inches south. Ramsey County Surveyor's Office
December 14, 2004	Retied monument. Ramsey County Surveyor's Office
September 30, 2009	Retied monument. Ramsey County Surveyor's Office
July 3, 2014	Found a cast iron monument, flush and inspected local ties. Ramsey County Surveyor's Office
July 27, 2020	Found a cast iron monument, flush in grass and inspected local ties. Ramsey County Surveyor's Office
July 30, 2020	Found a cast iron monument, flush in grass and recorded local ties. Ramsey County Surveyor's Office