

# MONUMENT 168

## CERTIFICATE OF LOCATION OF GOVERNMENT CORNER

North Quarter Corner of Section 21, Township 30 North, Range 22 West, County of Ramsey, State of Minnesota.

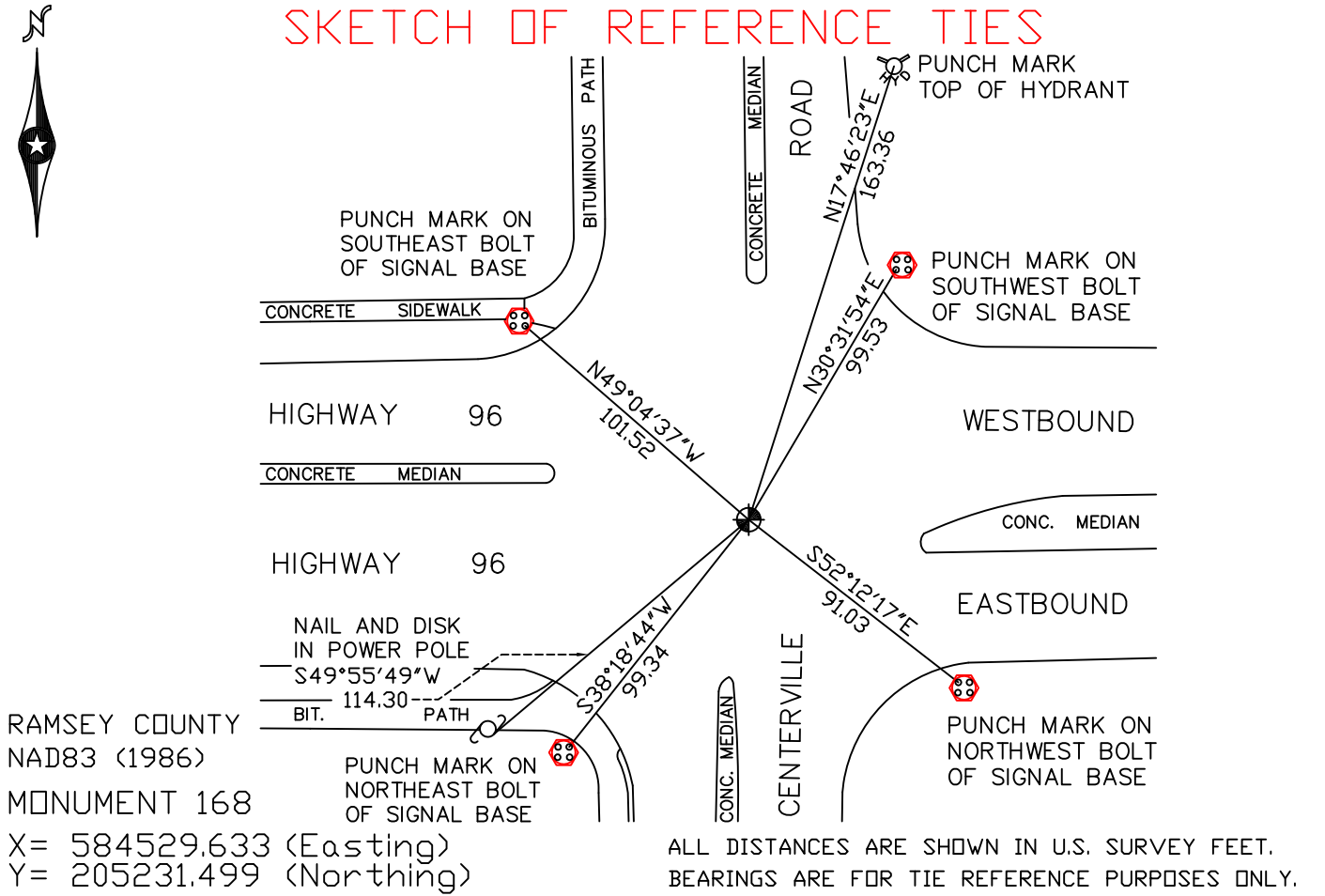
At the corner location shown on the sketch

On August 25, 2010 found a cast iron monument, within a cast iron manhole assembly.

left monument as found     lowered monument     removed monument (explain)

On \_\_\_\_\_ placed a \_\_\_\_\_

### SKETCH OF REFERENCE TIES



Statements of evidence relative to this corner are on the following page(s).

I hereby certify that this document and the data contained herein was prepared by me or under my direct supervision this \_\_\_\_\_ day of \_\_\_\_\_, 20\_\_\_\_.

\_\_\_\_\_  
SIGNATURE

Minnesota License No. \_\_\_\_\_

County Surveyor     Deputy County Surveyor     Land Surveyor

OFFICE OF COUNTY SURVEYOR  
County of Ramsey

I hereby certify that this document was filed in the County Surveyor's office on the \_\_\_\_\_ day of \_\_\_\_\_, 20\_\_\_\_.

\_\_\_\_\_  
SIGNATURE

Michael D. Fiebiger, P.L.S.  
Ramsey County Surveyor

# MONUMENT 168

Found a cast iron monument, 1978.

Tied monument, June 14, 1990.

Retied monument, September 29, 1998.

Removed monument for construction, June 20, 2000.

Reset cast iron monument, down 18 in., June 22, 2000.

Tied monument, found in a cast iron manhole assembly, April 28, 2003.

Retied monument, August 25, 2010.