

# MONUMENT 166

## CERTIFICATE OF LOCATION OF GOVERNMENT CORNER

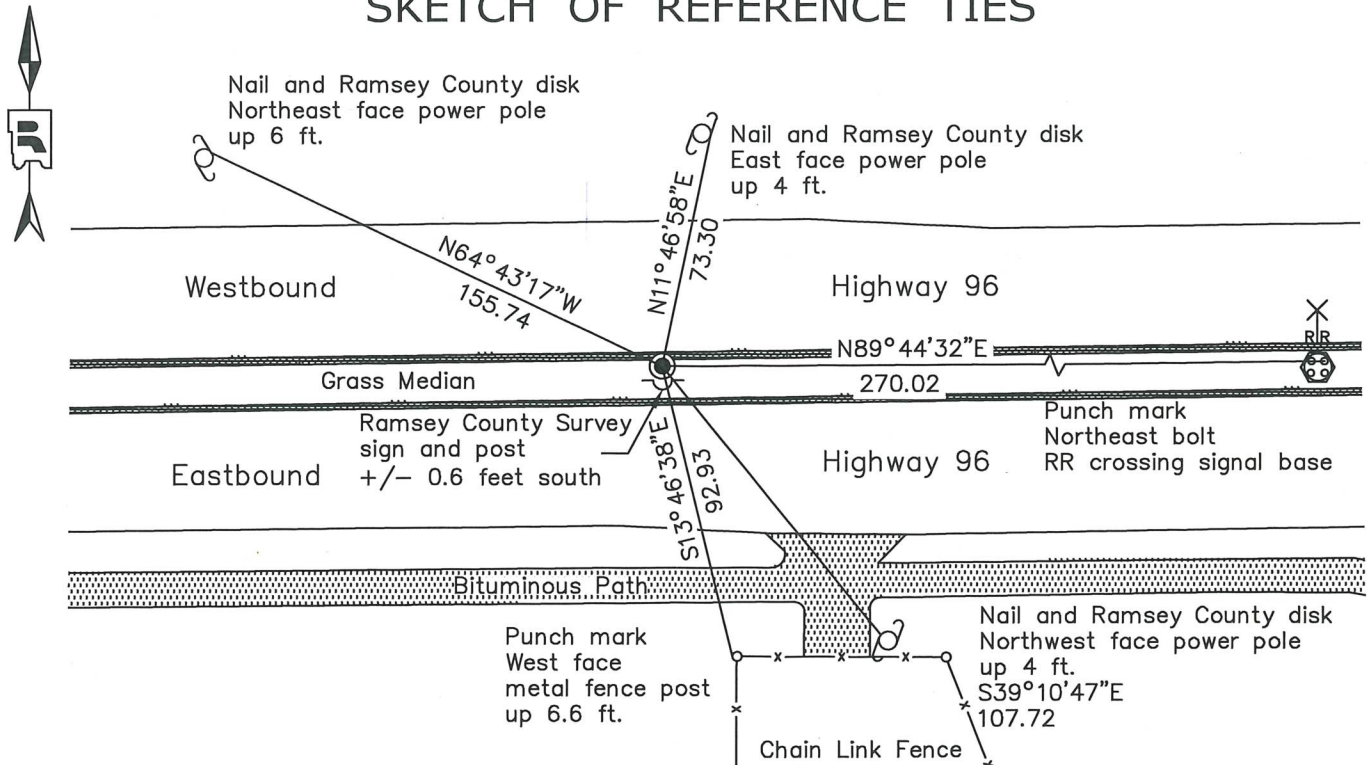
South Quarter Corner of Section 17, Township 30 North, Range 22 West, County of Ramsey, State of Minnesota.

At the corner location shown on the sketch

On December 6, 2023 found a cast iron monument in grass median

On \_\_\_\_\_ placed a \_\_\_\_\_

### SKETCH OF REFERENCE TIES



Monument 166		
Ramsey County		
NAD83 (1986)	NAD83 (2011)	
Northing = 205220.70	Northing = 205221.34	All distances are shown in U.S. Survey Feet.
Easting = 579242.74	Easting = 579242.21	Bearings are for tie reference purposes only.

Statements of evidence relative to this corner are on the following page.

I hereby certify that this survey, plan, or report was prepared by me or under my direct supervision, that I am a duly Licensed Land Surveyor under the laws of the state of Minnesota, and that this certificate is correct and complete to the best of my knowledge and belief.

*Devin R. Ball* 4/29/24

Devin R. Ball Date  
Deputy County Surveyor  
Minnesota License No. 56023

OFFICE OF COUNTY SURVEYOR  
County of Ramsey

I hereby certify that this document was filed in the County Surveyor's office this 29<sup>th</sup> day of April, 2024.

*Daniel D. Baar*

Daniel D. Baar  
Ramsey County Surveyor  
Minnesota License No. 45816

# MONUMENT 166

South Quarter Corner of Section 17, Township 30 North, Range 22 West

December 4, 1847	East Random between Sections 17 and 20. Intersect North and South line 10 links north of post. West corrected between Sections 17 and 20. At 40.10 chains set 1/4 Section post. Bur Oak 9 N30W 1.66 Issac N. Higbee, Deputy Surveyor
March, 1898	In establishing the 1/4 Corner between Sections 17 and 20, found Government witness tree. Fixed Corner and tied it. Ramsey County Resurvey
May 11, 1898	Set granite monument. Ramsey County Resurvey
February, 1946	Checked Monument. Ramsey County Engineer's Office
February, 1967	T.H. 96 S.P. 6224-17 NOTES BY SHELDON FOX FOUND GRANITE MONUMENT 6" TO 3" BELOW BIT SURFACE & is FLUSH WITH OLD CONCRETE PAVEMENT. Minnesota Highway Department
1979	Found granite down +/- 5 inches. Set cast iron cap and bolt in cement. Ramsey County Surveyor's Office
May 7, 1990	Tied cast iron monument in concrete. Ramsey County Surveyor's Office
September 22, 1998	Set 20 inch cast iron in median; sign and post set south of monument 0.8 feet. Ramsey County Surveyor's Office
December 4, 1998	Retied monument. Ramsey County Surveyor's Office
December 14, 2004	Retied monument. Ramsey County Surveyor's Office
August 3, 2010	Retied monument. Ramsey County Surveyor's Office
December 14, 2004	Retied monument. Ramsey County Surveyor's Office
May 29, 2015	Found cast iron monument, down 0.2 feet and inspected local ties. Ramsey County Surveyor's Office
August 29, 2019	Found cast iron monument, down 0.2 feet and inspected local ties. Ramsey County Surveyor's Office
August 30, 2023	Found cast iron monument, down 0.2 feet and inspected local ties. Ramsey County Surveyor's Office
December 6, 2023	Found cast iron monument, down 0.2 feet and recorded local ties. Ramsey County Surveyor's Office