

MONUMENT 163

CERTIFICATE OF LOCATION OF GOVERNMENT CORNER

Southeast Corner of Section 13, Township 30 North, Range 23 West, County of Ramsey, State of Minnesota.

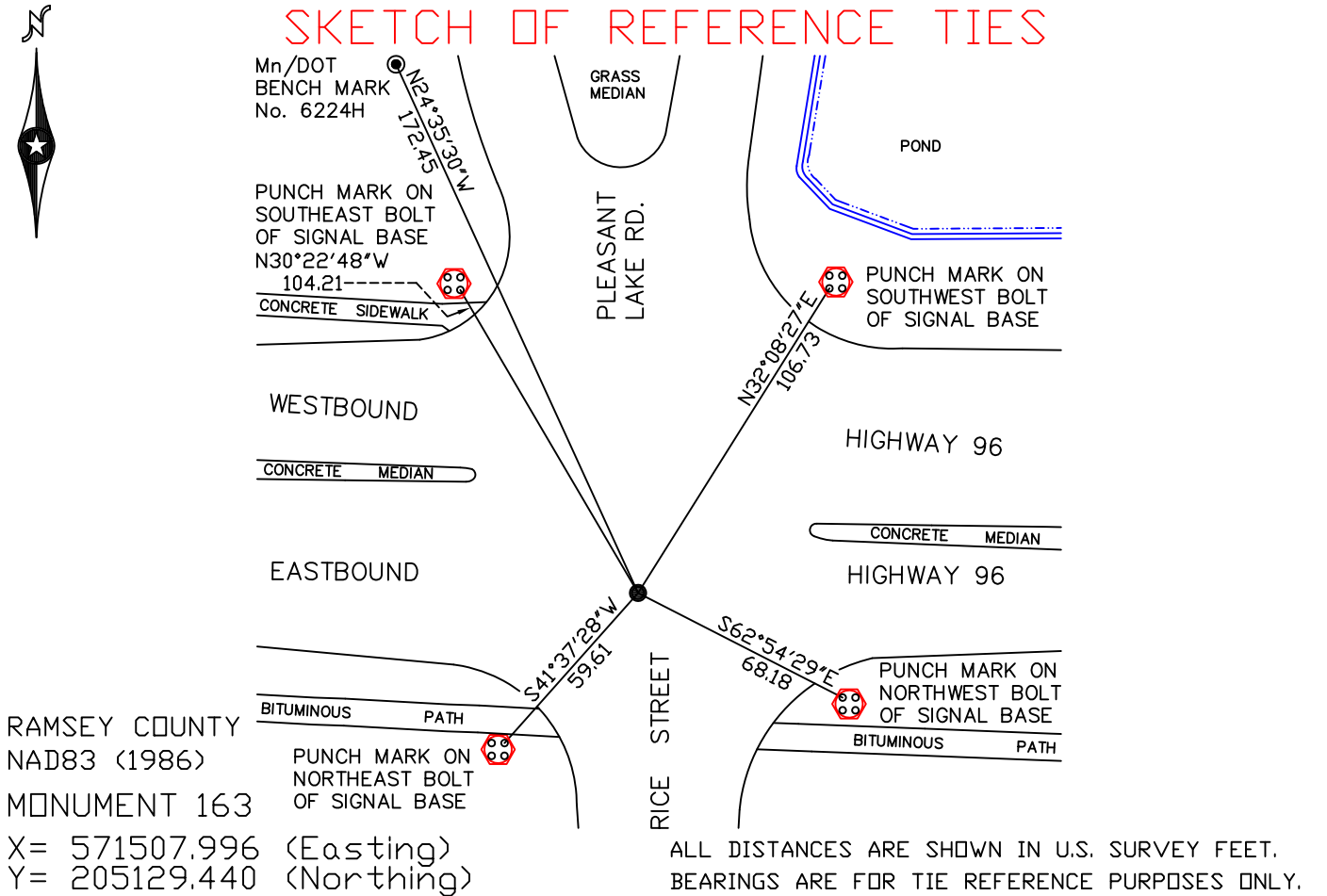
At the corner location shown on the sketch

On September 17, 2010 found a 3 1/8 inch brass disk, flush.

left monument as found lowered monument removed monument (explain)

On _____ placed a _____

SKETCH OF REFERENCE TIES



Statements of evidence relative to this corner are on the following page(s).

I hereby certify that this document and the data contained herein was prepared by me or under my direct supervision this _____ day of _____, 20____.

SIGNATURE

Minnesota License No. _____

- County Surveyor
- Deputy County Surveyor Land Surveyor

OFFICE OF COUNTY SURVEYOR
County of Ramsey

I hereby certify that this document was filed in the County Surveyor's office on the _____ day of _____, 20____.

SIGNATURE

Michael D. Fiebiger, P.L.S.
Ramsey County Surveyor

MONUMENT 163

Found a cast iron monument, no date given in field book.

Raised cast iron monument, May 26, 1976.

Monument covered by Mn/DOT construction. Cleaned and concrete placed, 1989.

Removed 20 in. cast iron monument for construction, April 27, 2000.

Set a brass disc in concrete pavement, July 28, 2000.

Tied monument, March 21, 2001.

Retied monument, September 17, 2010.