

MONUMENT 160

CERTIFICATE OF LOCATION OF GOVERNMENT CORNER

North Quarter Corner of Section 23, Township 30 North, Range 23 West, County of Ramsey, State of Minnesota.

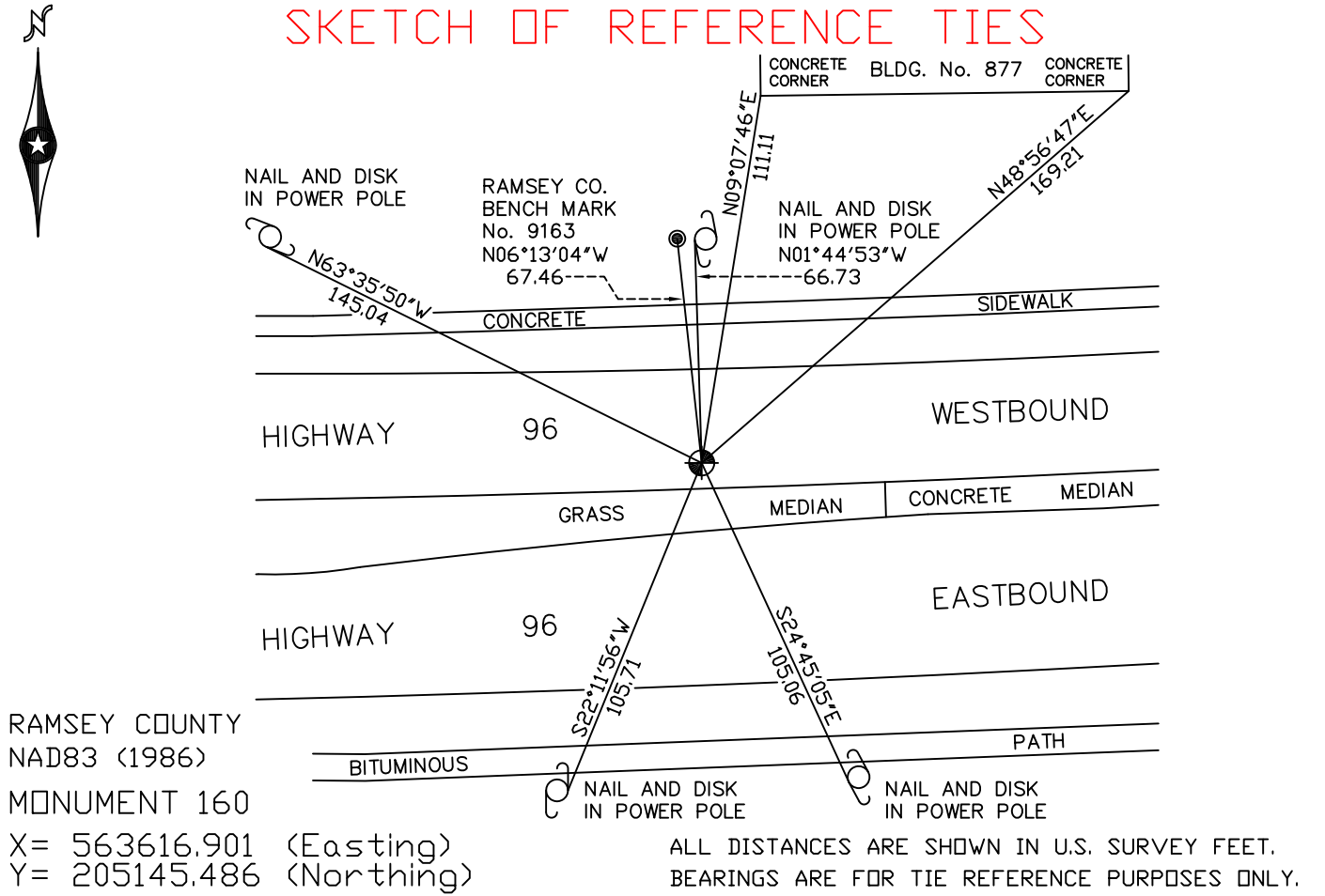
At the corner location shown on the sketch

On September 17, 2010 found a cast iron monument, within a cast iron manhole assembly.

left monument as found lowered monument removed monument (explain)

On _____ placed a _____

SKETCH OF REFERENCE TIES



RAMSEY COUNTY
NAD83 (1986)
MONUMENT 160

X= 563616.901 (Easting)
Y= 205145.486 (Northing)

ALL DISTANCES ARE SHOWN IN U.S. SURVEY FEET.
BEARINGS ARE FOR TIE REFERENCE PURPOSES ONLY.

Statements of evidence relative to this corner are on the following page(s).

I hereby certify that this document and the data contained herein was prepared by me or under my direct supervision this _____ day of _____, 20____.

SIGNATURE

Minnesota License No. _____

County Surveyor
 Deputy County Surveyor Land Surveyor

OFFICE OF COUNTY SURVEYOR
County of Ramsey

I hereby certify that this document was filed in the County Surveyor's office on the _____ day of _____, 20____.

SIGNATURE

Michael D. Fiebiger, P.L.S.
Ramsey County Surveyor

MONUMENT 160

Found a granite monument, down +/-1 ft., April 19, 1977.

Tied monument, June 13, 1990.

Monument destroyed by construction, 1997.

Set a 20 in. cast iron monument and sleeve, June 8, 1998.

Contractor set a cast iron manhole assembly over monument, July, 1998.

Tied monument, July 19, 2001.

Retied monument, September 17, 2010.