

# MONUMENT 16

## CERTIFICATE OF LOCATION OF FOUND MONUMENT

**NOTE: TWO LOCATIONS FOR THIS CORNER HAVE BEEN PERPETUATED (SEE BELOW)**  
 North Quarter Corner of Section 5, Township 30 North, Range 22 West, County of Ramsey, State of Minnesota.

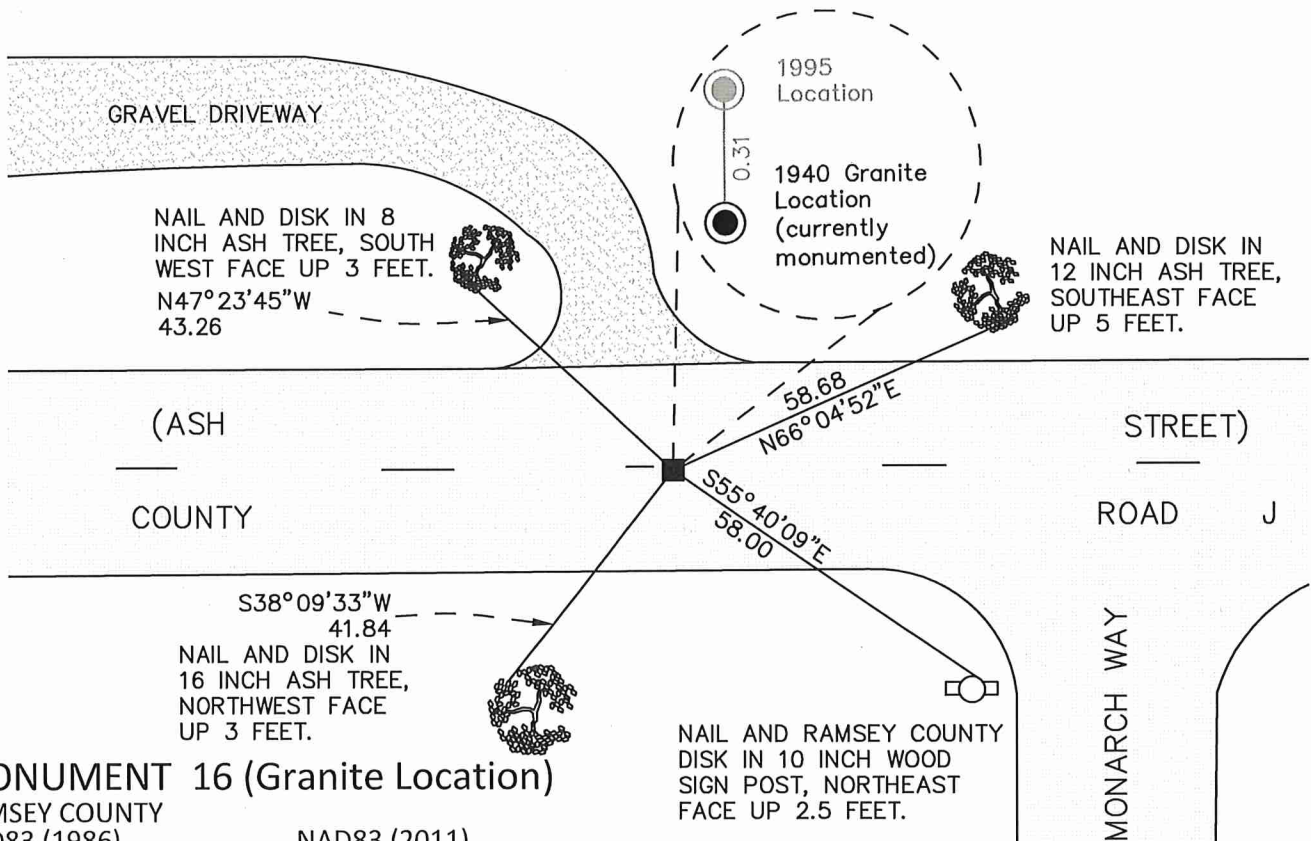
At the corner location shown on the sketch

On June 13, 2017 found a granite monument.

left monument as found       raised/lowered monument       removed monument (explain)

On June 13, 2017 placed a cast iron manhole assembly over granite monument.

### SKETCH OF REFERENCE TIES



### MONUMENT 16 (Granite Location)

RAMSEY COUNTY  
 NAD83 (1986)      NAD83 (2011)  
 Northing = 221547.107    Northing = 221547.990  
 Easting = 579171.513    Easting = 579171.112

NAIL AND RAMSEY COUNTY  
 DISK IN 10 INCH WOOD  
 SIGN POST, NORTHEAST  
 FACE UP 2.5 FEET.

ALL DISTANCES ARE SHOWN IN U.S. SURVEY FEET.  
 BEARINGS ARE FOR TIE REFERENCE PURPOSES ONLY.

Statements of evidence relative to this corner are on the following page.

I hereby certify that this survey, plan, or report was prepared by me or under my direct supervision, that I am a duly Licensed Land Surveyor under the laws of the state of Minnesota, and that this certificate is correct and complete to the best of my knowledge and belief.

Daniel D. Baar      8/17/21  
 Daniel D. Baar      Date  
 Ramsey County Surveyor  
 Minnesota License No. 45816

OFFICE OF COUNTY SURVEYOR  
 County of Ramsey

I hereby certify that this document was filed in the County Surveyor's office this 17<sup>th</sup> day of August, 2021.

Daniel D. Baar  
 Daniel D. Baar, L.S.  
 Ramsey County Surveyor

# MONUMENT 16

North Quarter Corner of Section 5, Township 30 North, Range 22 West

August 20, 1847	West of South side Section 32, at 40.00 chains, set a post at 1/4 Section Corner. Birch 8 N89W 257; B. Oak 8 N63E 113. Henry A. Wiltse, Deputy Surveyor
June 6, 1940	Found iron 3 feet below road surface and placed monument over iron. Ramsey County Engineer's Office
November, 1954	Checked monument. Ramsey County Engineer's Office
April, 1965	Reset monument. Ramsey County Engineer's Office
May 16, 1974	Found a railroad spike over a granite monument, down 0.7 feet. Drilled a larger hole in top of granite monument and cemented a cast iron cap and bolt on top. Ramsey County Surveyor's Office
July 3, 1974	Retied monument. Ramsey County Surveyor's Office
July 13, 1987	Found cap missing. Monument down 0.3 feet. Ramsey County Surveyor's Office
Unknown Date	Replaced cap. Ramsey County Surveyor's Office
April, 1990	Tied out monument for removal during construction. Ramsey County Surveyor's Office
May 7, 1990	Removed cast iron cap. Ramsey County Surveyor's Office
September 5, 1990	Found broken granite monument down +/- 18 inches. Ramsey County Surveyor's Office
October 30, 1990	Placed a 4 and 5/8 inch cast iron monument in cement and rock. Ramsey County Surveyor's Office
October 16, 1991	Placed a sign and post South +/- 26 feet. Ramsey County Surveyor's Office
January 27, 1993	Retied monument. Ramsey County Surveyor's Office
July 26, 1995	Placed an 8 inch cast iron monument marked "3rd Correction Line" in cement 0.31 feet North of granite location. Ramsey County Surveyor's Office
October 8, 1998	Retied "3rd Correction Line" cast iron monument. Ramsey County Surveyor's Office
June 25, 2004	Retied "3rd Correction Line" cast iron monument. Ramsey County Surveyor's Office

# MONUMENT 16

North Quarter Corner of Section 5, Township 30 North, Range 22 West

- |                    |  |
|--------------------|--|
| September 23, 2009 | Found "3rd Correction Line" cast iron monument, down +/- 0.10 feet. Retied monument. Ramsey County Surveyor's Office   |
| April 22, 2014     | Found "3rd Correction Line" cast iron monument, down 0.10 feet. Checked ties using certificate of location dated September 23, 2009. All ties present and in good condition. Ramsey County Surveyor's Office |
| July 13, 2017      | "3rd Correction Line" cast iron monument removed during road construction. Installed a cast iron manhole assembly over granite monument and tied granite monument. Ramsey County Surveyor's Office           |
| August 31, 2020    | Checked monument; all ties present. Ramsey County Surveyor's Office  |