

MONUMENT 159

CERTIFICATE OF LOCATION OF GOVERNMENT CORNER

Northeast Corner of Section 22, Township 30 North, Range 23 West, County of Ramsey, State of Minnesota.

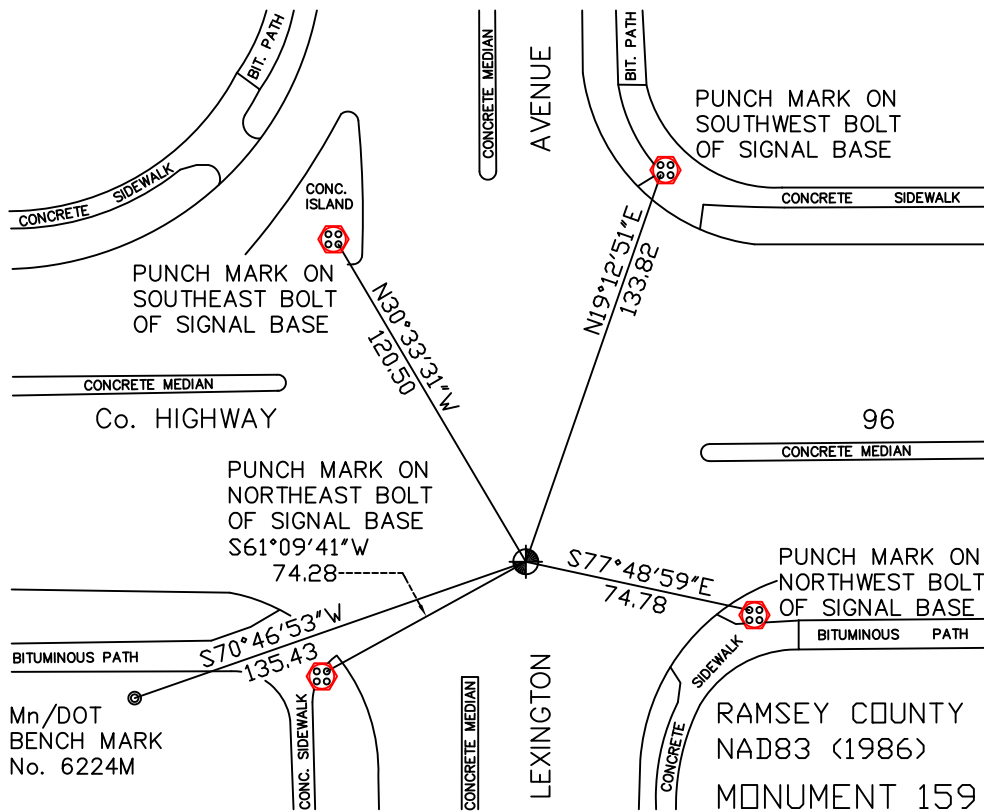
At the corner location shown on the sketch

On July 29, 2010 found a cast iron monument, within a cast iron manhole assembly.

left monument as found lowered monument removed monument (explain)

On _____ placed a _____

SKETCH OF REFERENCE TIES



ALL DISTANCES ARE SHOWN IN U.S. SURVEY FEET.
BEARINGS ARE FOR TIE REFERENCE PURPOSES ONLY.

X= 560971.577 (Easting)
Y= 205117.476 (Northing)

Statements of evidence relative to this corner are on the following page(s).

I hereby certify that this document and the data contained herein was prepared by me or under my direct supervision this _____ day of _____, 20____.

SIGNATURE

Minnesota License No. _____

- County Surveyor
 Deputy County Surveyor Land Surveyor

OFFICE OF COUNTY SURVEYOR
County of Ramsey

I hereby certify that this document was filed in the County Surveyor's office on the _____ day of _____, 20____.

SIGNATURE

Michael D. Fiebigler, P.L.S.
Ramsey County Surveyor

MONUMENT 159

Found a granite monument, down 3 1/2 in.; placed a cast iron cap and bolt monument, October 10, 1974.

Tied monument, July 28, 1975.

Monument removed by County Construction Department; cap and bolt gone, no date given in field book.

Tied monument, no date given in field book.

Found a granite monument, down +/-4 1/2 in., tied, April 17, 1995.

Construction Department removed monument; set a 20 in. cast iron monument, +/-18 in. below grade, October 1, 1997.

Contractor set a cast iron manhole assembly over monument; checked monument, October 9, 1997.

Retied monument, March 20, 2001.

Retied monument, July 29, 2010.