

MONUMENT 156

CERTIFICATE OF LOCATION OF GOVERNMENT CORNER

North Quarter Corner of Section 21, Township 30 North, Range 23 West, County of Ramsey, State of Minnesota.

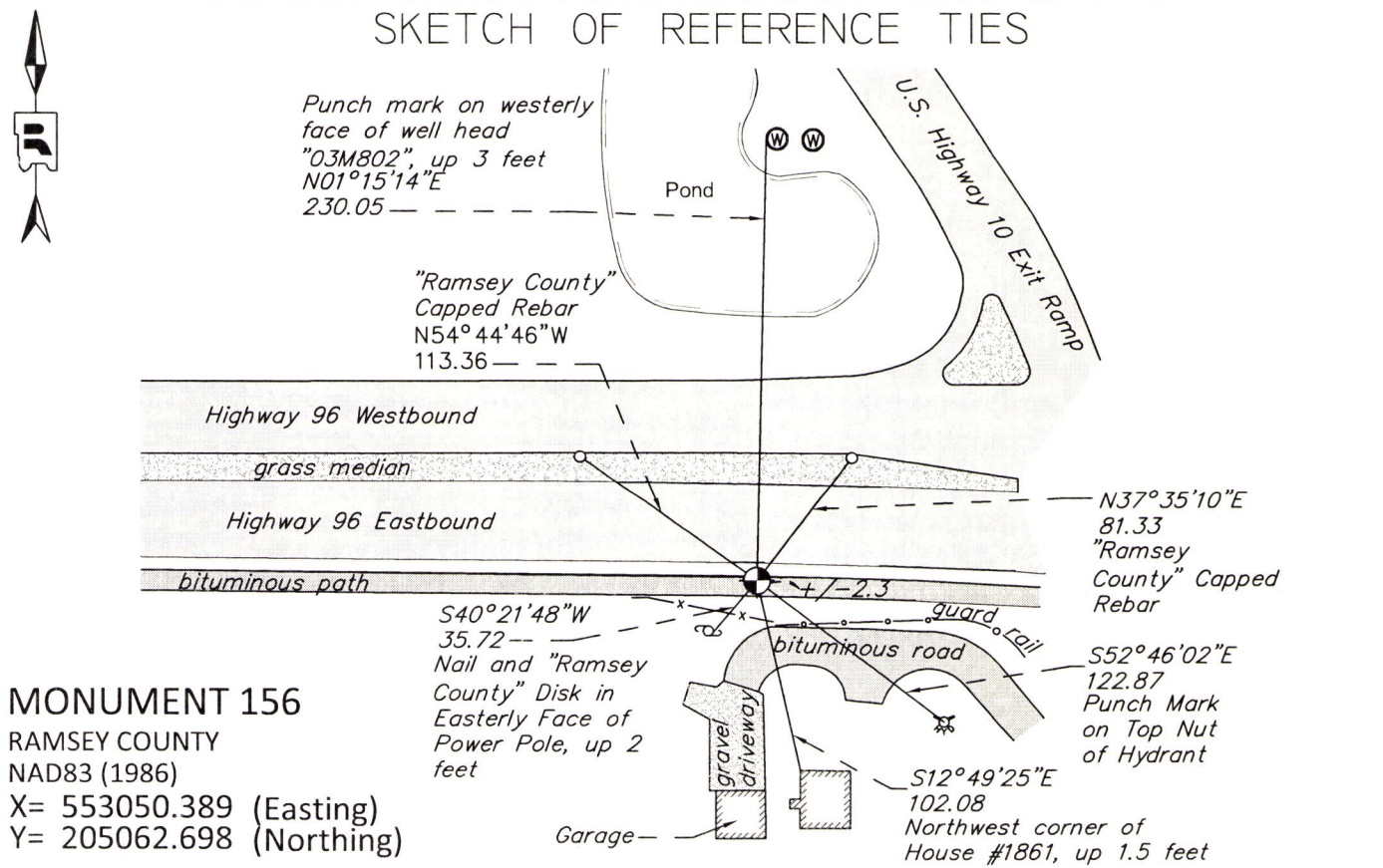
At the corner location shown on the sketch

On July 15, 2014 found a 20 inch "Ramsey County" cast iron monument flush in
bituminous path.

left monument as found
 raised/lowered monument
 removed monument (explain)

On _____ placed a _____

SKETCH OF REFERENCE TIES



MONUMENT 156
 RAMSEY COUNTY
 NAD83 (1986)
 X= 553050.389 (Easting)
 Y= 205062.698 (Northing)

NAD83 (1996)
 X= 553049.981 (Easting)
 Y= 205063.210 (Northing)

ALL DISTANCES ARE SHOWN IN U.S. SURVEY FEET.
 BEARINGS ARE FOR TIE REFERENCE PURPOSES ONLY.

Statements of evidence relative to this corner are on the following page.

I hereby certify that this survey, plan, or report was prepared by me or under my direct supervision, that I am a duly Licensed Land Surveyor under the laws of the state of Minnesota, and that this certificate is correct and complete to the best of my knowledge and belief.

Daniel D. Baar 6-2-15
 Daniel D. Baar Date
 Deputy County Surveyor
 Minnesota License No. 45816

OFFICE OF COUNTY SURVEYOR
 County of Ramsey

I hereby certify that this document was filed in the County Surveyor's office this 2nd day of June, 20 15.

Craig W. Hinzman
 Craig W. Hinzman, L.S.
 Ramsey County Surveyor

MONUMENT 156

North Quarter Corner of Section 21, Township 30 North, Range 23 West

- | | |
|-------------------|--|
| December 16, 1847 | Set 1/4 Section post (Bur Oak 14 N80E 172; Bur Oak 12 S86W 155)
Isaac Higbee, Deputy Surveyor. |
| April 19, 1901 | In establishing the 1/4 Corner between Sections 16 and 21, found one old
Government witness stump, fixed corner and tied it.
Ramsey County Resurvey |
| May 18, 1901 | Set monument. Ramsey County Resurvey |
| November, 1943 | Checked monument. Ramsey County Engineer's Office |
| September 3, 1963 | Tied 6 inch granite flush in gravel. Minnesota Highway Department |
| February, 1967 | Tied a stone monument 12 inch below surface. Minnesota Highway Department |
| June 26, 1975 | Found a cast iron monument and tied. Ramsey County Surveyor's Office |
| January 22, 1992 | Retied monument. Ramsey County Surveyor's Office |
| August 6, 2003 | Retied monument, flush. Ramsey County Surveyor's Office |
| November 3, 2008 | Retied monument, down 0.25 feet. Ramsey County Surveyor's Office |
| October 19, 2012 | Recorded Static GPS observation of cast iron monument prior to removal during
road reconstruction. Ramsey County Surveyor's Office |
| April 24, 2013 | Recorded Static GPS observation of cast iron monument prior to removal during
road reconstruction to verify observation taken October 19, 2012.
Ramsey County Surveyor's Office |
| Summer 2013 | Monument removed during road reconstruction.
Ramsey County Surveyor's Office. |
| July 10, 2014 | Set two "Ramsey County" capped rebars in grass median. Recorded Static GPS
observations on each capped rebar to use in reestablishing corner position.
Ramsey County Surveyor's Office |
| July 15, 2014 | Placed a new 20 inch "Ramsey County" cast iron monument in bituminous path
using Static GPS control to a position derived from averaged values of Static
observations dated October 19, 2012 and April 24, 2013, and using local ties
undisturbed during construction of Highway 10 and Highway 96. Tied
monument. Ramsey County Surveyor's Office |