

MONUMENT 152

CERTIFICATE OF LOCATION OF GOVERNMENT CORNER

South Quarter Corner of Section 18, Township 30 North, Range 23 West, County of Ramsey, State of Minnesota.

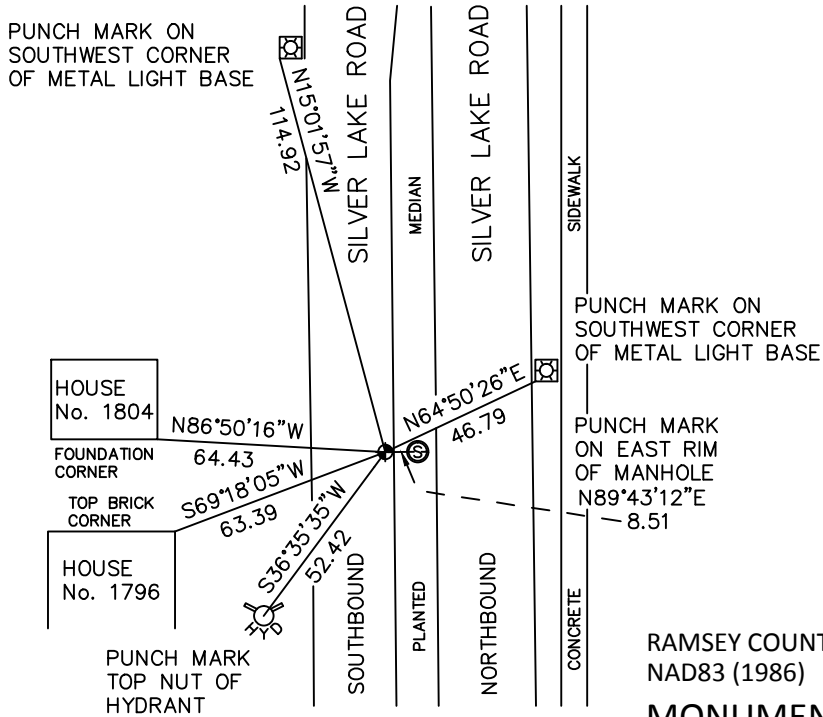
At the corner location shown on the sketch

On July 15, 2010 found a cast iron monument, down 0.05 feet.

left monument as found raised/lowered monument removed monument (explain)

On _____ placed a _____

SKETCH OF REFERENCE TIES



ALL DISTANCES ARE SHOWN IN U.S. SURVEY FEET.
BEARINGS ARE FOR TIE REFERENCE PURPOSES ONLY.

RAMSEY COUNTY
NAD83 (1986)

MONUMENT 152

X= 542477.332 (Easting)
Y= 204971.847 (Northing)

Statements of evidence relative to this corner are on the following page.

I hereby certify that this document has been prepared by me or under my direct supervision this _____ day of _____, 20____.

MINNESOTA LICENSE NO. _____
SIGNATURE

- County Surveyor
 Deputy County Surveyor Land Surveyor

OFFICE OF COUNTY SURVEYOR
County of Ramsey

I hereby certify that this document was filed in the County Surveyor's office this _____ day of _____, 20____.

SIGNATURE
Craig W. Hinzman, L.S.
Ramsey County Surveyor

MONUMENT 152

Found a cast iron monument flush and tied, August 21, 1974.

Found monument broken off, August 1, 1985.

Tied monument for reconstruction of road, May 6, 2002.

Removed monument, May 8, 2003.

Placed a 5/8 in. rebar and cap temporarily until a cast iron monument could be installed, November 10, 2004.

Cored an 8 in. hole in curb edge and bituminous and placed cast iron monument in concrete slightly below road grade, April 28, 2005.

Tied monument, May 3, 2005.

Retied monument, July 15, 2010.