

# MONUMENT 14

## CERTIFICATE OF LOCATION OF FOUND MONUMENT

**NOTE: TWO LOCATIONS FOR THIS CORNER HAVE BEEN PERPETUATED (SEE BELOW)**  
 North Quarter Corner of Section 6, Township 30 North, Range 22 West, County of Ramsey, State of Minnesota.

At the corner location shown on the sketch

On \_\_\_\_\_ found \_\_\_\_\_

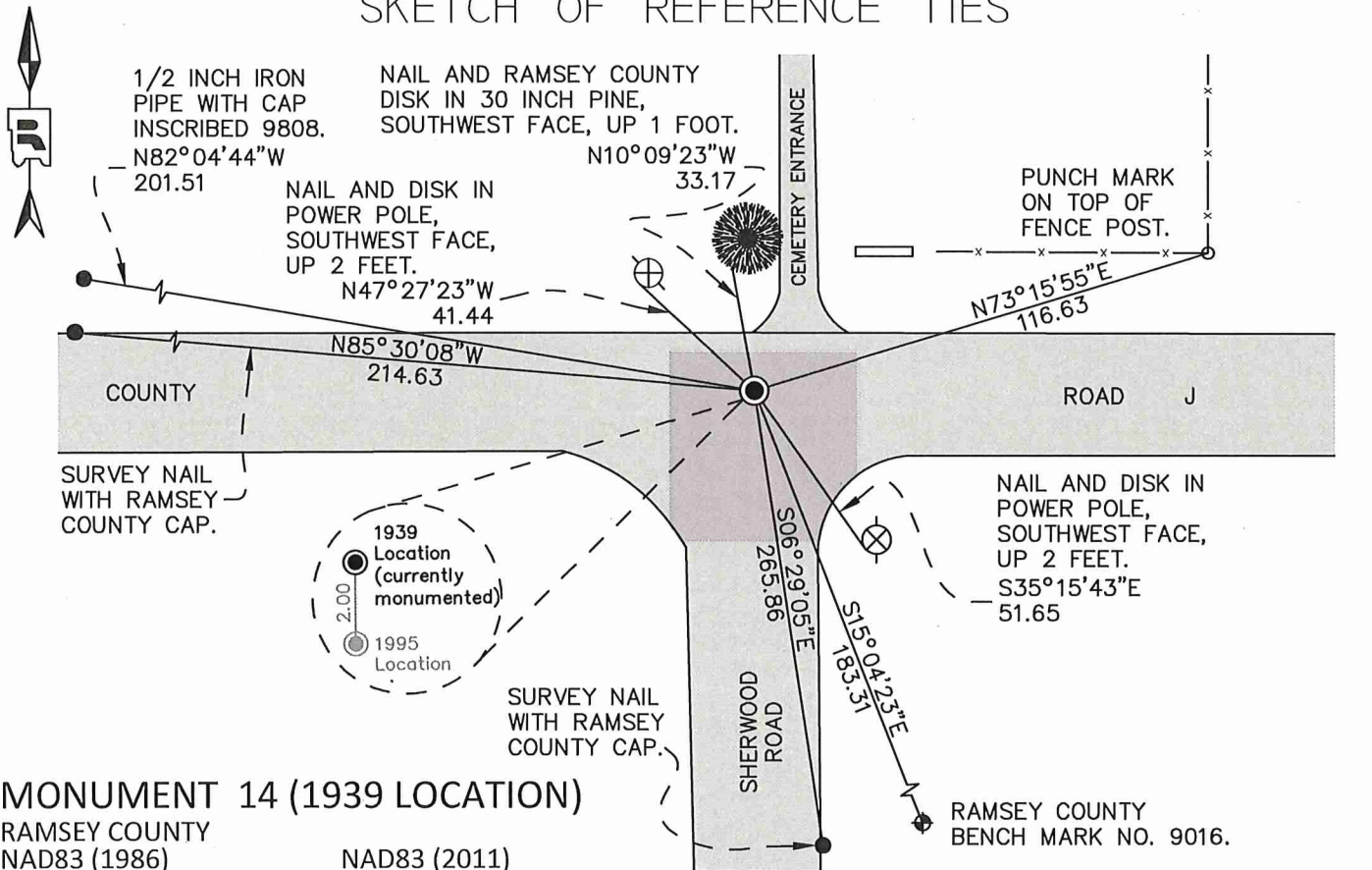
left monument as found

raised/lowered monument

removed monument (explain)

On July 14, 2017 placed a 20 inch "Ramsey County" cast iron monument within manhole assembly.

### SKETCH OF REFERENCE TIES



**MONUMENT 14 (1939 LOCATION)**  
 RAMSEY COUNTY  
 NAD83 (1986)                      NAD83 (2011)  
 Northing = 221540.764    Northing = 221541.546  
 Easting = 573892.005    Easting = 573891.483

ALL DISTANCES ARE SHOWN IN U.S. SURVEY FEET.  
 BEARINGS ARE FOR TIE REFERENCE PURPOSES ONLY.

Statements of evidence relative to this corner are on the following page.

I hereby certify that this survey, plan, or report was prepared by me or under my direct supervision, that I am a duly Licensed Land Surveyor under the laws of the state of Minnesota, and that this certificate is correct and complete to the best of my knowledge and belief.

Daniel D. Baar                      8/10/21  
 Daniel D. Baar                      Date  
 Ramsey County Surveyor  
 Minnesota License No. 45816

OFFICE OF COUNTY SURVEYOR  
 County of Ramsey

I hereby certify that this document was filed in the County Surveyor's office this 10<sup>th</sup> day of August, 20 21.

Daniel D. Baar  
 Daniel D. Baar, L.S.  
 Ramsey County Surveyor

# MONUMENT 14

North Quarter Corner of Section 6, Township 30N, Range 22W

October, 1939	Placed stone monument. Ramsey County Engineer's Office
June 3, 1941	Placed iron. Ramsey County Engineer's Office
November, 1950	Checked monument (pipe). Found "OK". Ramsey County Engineer's Office
December, 1954	Checked monument (pipe). Found "OK". Ramsey County Engineer's Office
April, 1965	Checked monument. Ramsey County Engineer's Office
1975	Found 1/2 inch iron pipe. Dug down 4.0 feet and found nothing. Placed cast iron monument. Ramsey County Surveyor's Office
January 23, 1976	Retied monument. Ramsey County Surveyor's Office
April, 1990	Tied out monument and removed cast iron monument for construction. Ramsey County Surveyor's Office
September 5, 1990	Placed a 20 inch cast iron monument. Ramsey County Surveyor's Office
January 27, 1993	Retied monument. Ramsey County Surveyor's Office
July 27, 1995	Placed a 20 inch cast iron monument marked "3rd Correction Line" 2.0 feet south of original cast iron monument (1939 location). Ramsey County Surveyor's Office
September 24, 1998	Retied monument (1995 location). Ramsey County Surveyor's Office
June, 2004	Retied monument (1995 location). Exact day in June unknown. Ramsey County Surveyor's Office
September 23, 2009	Retied monument (1995 location). Ramsey County Surveyor's Office
May 4, 2010	Retied monument (1995 location). Ramsey County Surveyor's Office
April 22, 2014	Found cast iron monument (1995 location), down 0.10 feet. Checked ties using certificate of location dated September 23, 2009. All ties present and in good condition except nail and disk in power pole at N44°22'50"W, a distance of 40.32 feet. Power pole replaced. Ramsey County Surveyor's Office

# MONUMENT 14

North Quarter Corner of Section 6, Township 30N, Range 22W

- May 8, 2017 Set monument offsets for the cast iron monument perpetuating the 1939 location prior to removal due to road construction. Also, performed a Static GPS observation on monument to obtain NAD83 (2011) coordinates. Cast iron monuments representing the 1939 and 1995 locations were removed by others. Ramsey County Surveyor's Office
- July 14, 2017 Using construction offsets, set a 20 inch "Ramsey County" cast iron monument within a cast iron manhole assembly at the 1939 location. Retied monument. Ramsey County Surveyor's Office
- July 21, 2020 Checked monument; all ties in good condition. Ramsey County Surveyor's Office.