

MONUMENT 138

CERTIFICATE OF LOCATION OF GOVERNMENT CORNER

East Quarter Corner of Section 13, Township 30 North, Range 23 West,
County of Ramsey, State of Minnesota.

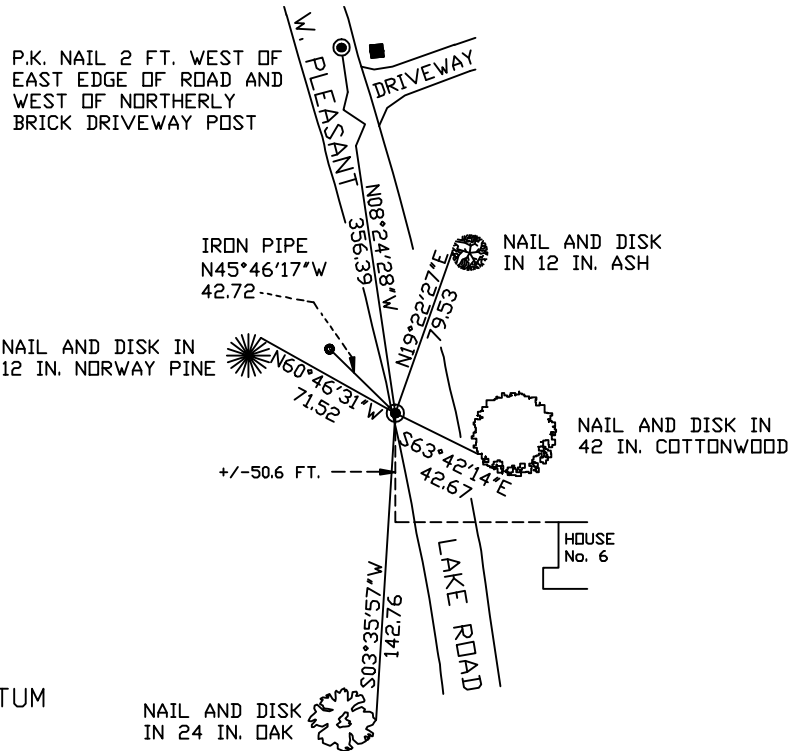
At the corner location shown on the sketch

On February 25, 2005 found a 3/4 in. iron pipe, down 12 in., within a cast iron
manhole assembly.

left monument as found lowered monument removed monument (explain)

On _____ placed a _____

SKETCH OF REFERENCE TIES



RAMSEY COUNTY
NAD83 (1986) DATUM
MONUMENT 138

X= 571480.105 (Easting)
Y= 207792.125 (Northing)

ALL DISTANCES ARE SHOWN IN U.S. SURVEY FEET.
BEARINGS ARE FOR TIE REFERENCE PURPOSES ONLY.

Statements of evidence relative to this corner are on the following page(s).

I hereby certify that this document and the data contained herein was prepared by me or under my direct supervision this _____ day of _____, 20____.

SIGNATURE

Minnesota License No. _____

County Surveyor Land Surveyor

OFFICE OF COUNTY SURVEYOR

County of Ramsey

I hereby certify that this document was filed in the County Surveyor's office on the ____ day of _____, 20____.

David D. Claypool, P.L.S., County Surveyor

By _____, Deputy

MONUMENT 138

Found rebar (5/8 in.) in pavement placed by Milner W. Carley and tied out, 1974.

Found 1/2 in. iron pipe in 3/4 in. iron in concrete and a 5 in. steel pipe down 12 in.; set 12 in. diameter manhole over 3/4 in. iron; 1/2 in. iron was bent and removed, June 15, 2001.

Dug in suspected area (6 ft. by 17.8 ft.) and an area (1.5 ft. by 6 ft.) in the southwest corner of the area to a depth of 3.9 ft.; found nothing. Used a Maintenance Department back hoe and crew. Filled area with bituminous, July 17, 2001.

Raised manhole assembly up 2 in. for new lift of bituminous, September 23, 2002.

Retied monument, February 25, 2005.